

VSN SERIES

Quick Start Guide

VSN400 Series of Wall Controllers



Engineering the **world's best** visual solutions


DATAPATH
EXCELLENCE BY DESIGN

VSN400 Quick Start Guide

WELCOME

Thank you for purchasing the Datapath VSN400 Wall Controller. The aim of this document is to quickly guide you through the process of initial setup.

For detailed information, the User Guide can be downloaded from www.datapath.co.uk

CONTENTS

Main System

- VSN400 Main chassis
- Mouse/Keyboard
- Accessories Pack
- Mains Cable
- Build Log

In addition, if any optional cards are installed:

- PCIe card product leaflets
- Cables/Adapters as specified in the product leaflets

Each Datapath system is custom built, therefore the number and type of input and output cards will differ from system to system.

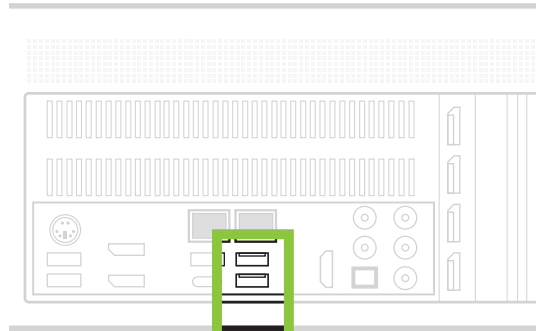
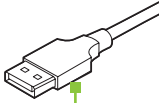
Accompanying this Quick Start Guide are PCIe card product leaflets which give details on how the cards are installed and any accessories supplied with them.



VSN400 Quick Start Guide

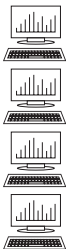
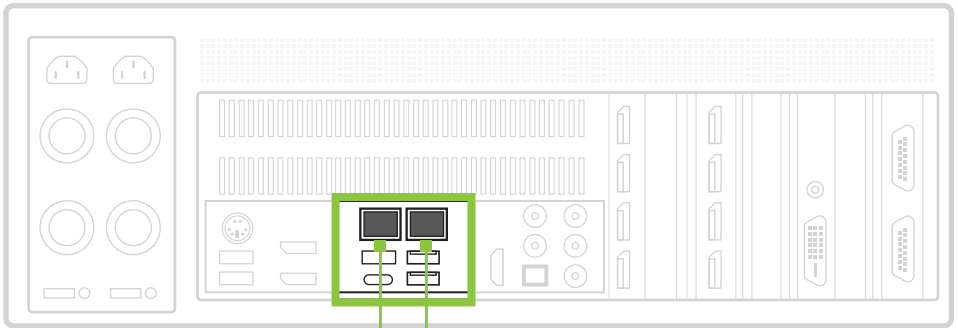
STEP 1 KEYBOARD AND MOUSE

Connect Keyboard and Mouse to USB Ports.
USB ports can be found on the front and rear of the chassis.



STEP 2 CONNECT TO A NETWORK (OPTIONAL)

If the VSN400 is to be used over a network, connect it to a network point (cables not supplied) using one of the LAN connectors on the rear panel.



Network Cable not supplied.

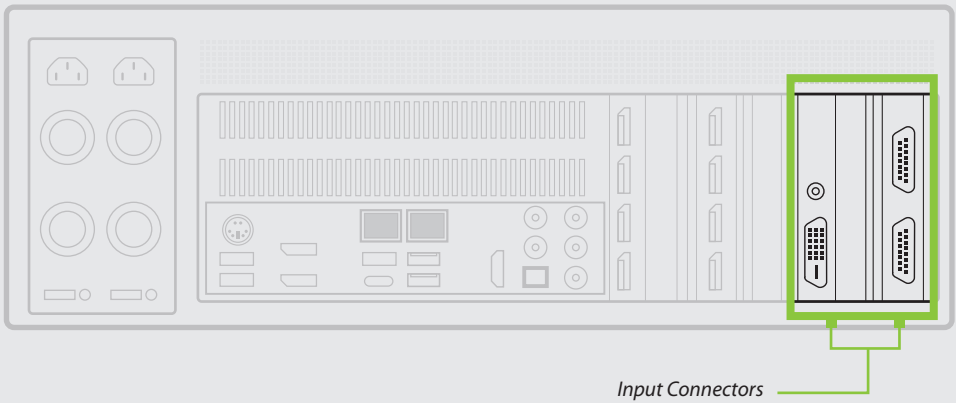
VSN400 Quick Start Guide

STEP 3 CONNECT INPUT SOURCE

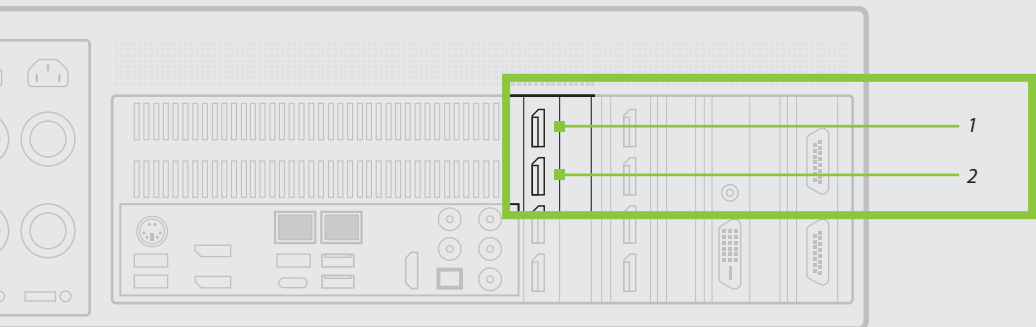
Each Datapath system is custom built. The number and type of inputs will differ from system to system.

Contained within the documentation pack are PCIe card product leaflets which give details on how the cards are connected.

The I/O panel on your system may differ from the below illustration depending on which motherboard option you have purchased.

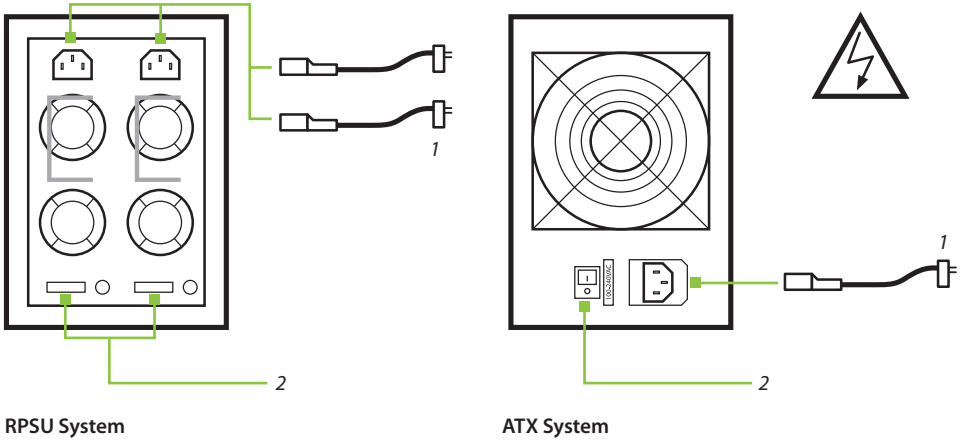


To enable you to complete the initial setup of the system, displays must be connected to the first and second output as shown below.



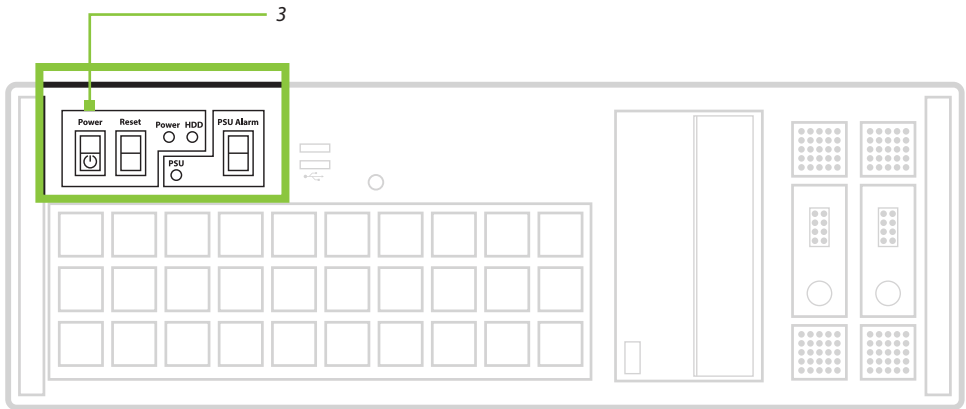
VSN400 Quick Start Guide

STEP 4 POWERING UP THE SYSTEM



RPSU System

ATX System



- 1 Connect power cables then plug into a mains supply.
- 2 Switch on the power supply units.
- 3 Switch on the system.

VSN400 Quick Start Guide

STEP 5 WINDOWS 10 SETUP

Once the system has been configured in our factory the operating system is resealed, meaning that when switching on the system for the first time the operating system setup commences.

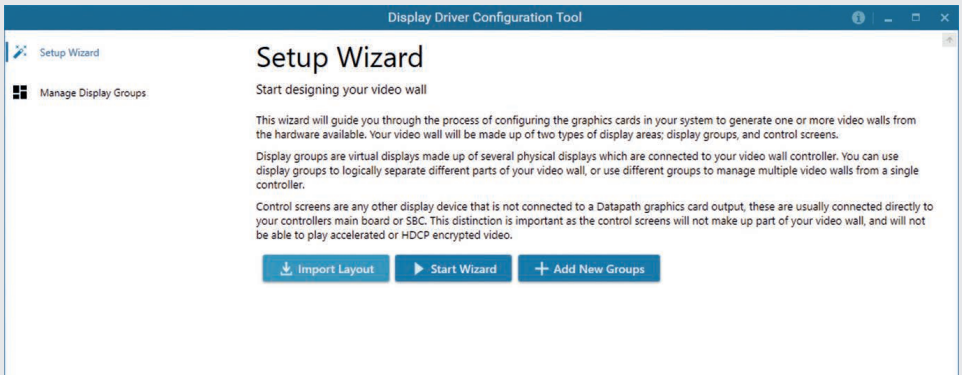
You will be prompted to enter information to set up your wall controller.

There is no requirement for users to enter a product key to activate Windows 10, activation is done automatically when connected to the internet.

You are strongly recommended to create a Restore USB Flash Drive. (See Step 8).

STEP 6 DISPLAY CONFIGURATION

Once the Windows setup is complete, the Display Driver Configuration Tool (DDCT) is displayed. The DDCT will guide you, step by step, through the configuration of the graphics outputs, enabling you to quickly create one or more video walls.



On the final stage of the configuration, the (DDCT) will recommend the optimum way to connect your VSN400 to your video wall displays.

You can access the configuration tool at anytime should you wish to make changes.

Right click on the desktop and select Display Driver Configuration Tool from the menu.

A full description of the Display Driver Configuration Tool can be found in the User Guide located in the system support folder.

VSN400 Quick Start Guide

STEP 7 WALLCONTROL 10 (OPTIONAL)

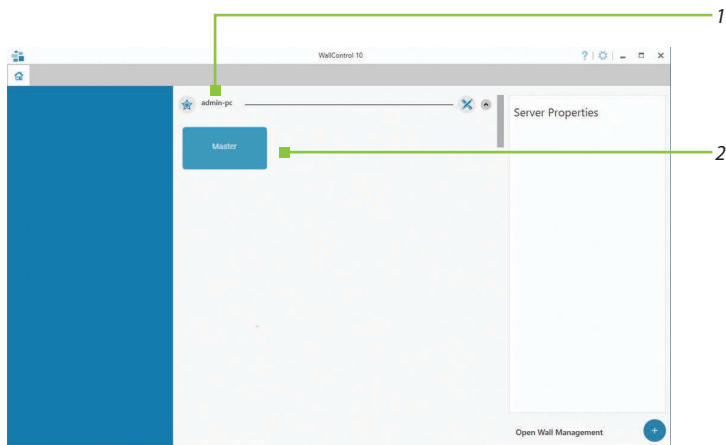
Before opening the Client interface you may need to start the Server by clicking on it in the Programs menu. The WallControl 10 Client will only detect servers that are running.



Start | All Programs | WallControl 10 - Server

When WallControl 10 is opened for the first time it is strongly recommended that you take a look through the help files prior to using the application.

The WallControl 10 - Client

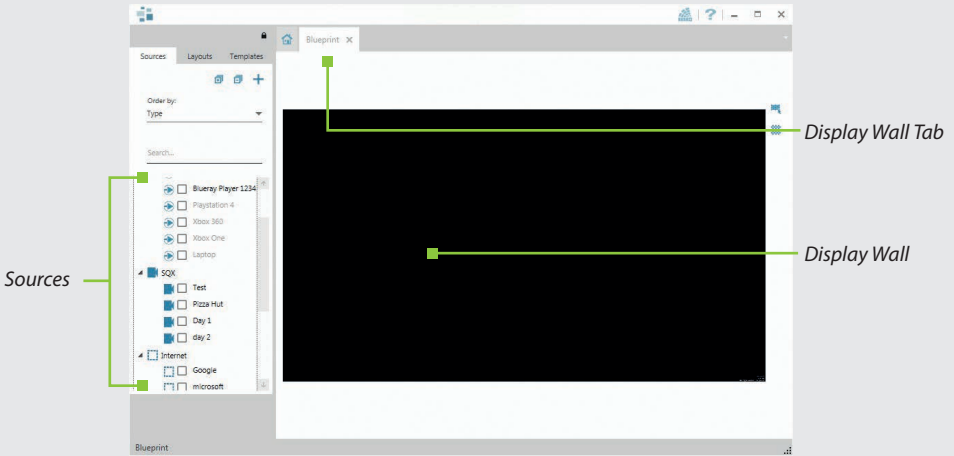


1 Indicates the servers you are able to connect to.

2 A representation of the display wall associated with the server.

Click on the display wall representation **(2)** to open the display wall tab.

VSN400 Quick Start Guide



When opened, the display wall tab shows a live representation of the physical wall and the sources available to display on it. To place a source on the video wall, simply click on the required source in the sources tab and drag it onto the display wall representation. (Note: It is not possible to drag Application sources, double click to open).

The application help file contains information explaining how multiple sources can be selected, how to use and create templates and how to save, recall and share layout files.

The WallControl 10 - Security Administration Client (Pro Version Only)

The WallControl 10 - Security Administration Client allows Administrators to assign specific users to roles on a wall-by-wall basis. For example, a user can be assigned a role allowing unrestricted access on one wall but assigned a role on another wall which only allows the opening of pre-determined layouts.

Prior to the Security Client being used for the first time, the SecurityOnOff.exe program must be run to enable security protection for the application. To run the SecurityOnOff.exe, ensure you are logged into Windows® with Administrator Rights.

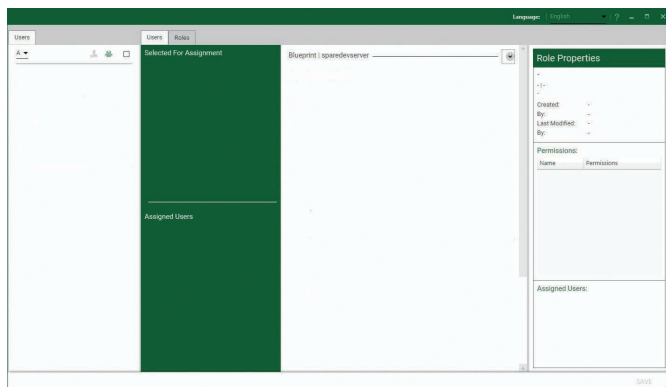
Locate and double click on the SecurityOnOff.exe file:

Program Files \WallControl 10\ Security Server\SecurityOnOff

VSN400 Quick Start Guide



Start | All Programs | WallControl 10 - Security Administration Client



A WallControl 10 Pro serial dongle must be inserted into a vacant USB port. If the dongle is removed or swapped, the Security Administration Client will not open and an error message is displayed, therefore it is important the dongle is not removed.

The WallControl 10 Security Application help file contains information on how to:

- Import users from the Windows Active Directory into the database.
- Create and edit roles.
- Assign permissions to providers, layouts and sources giving specific roles access to them.
- Assign roles to walls.

VSN400 Quick Start Guide

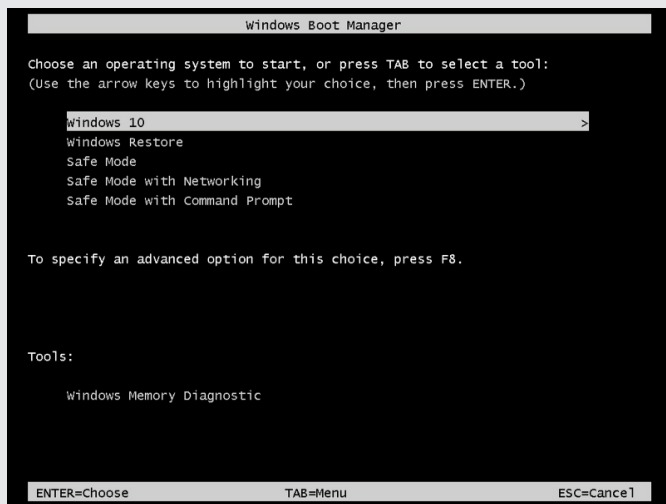
STEP 8 CREATE A RESTORE USB FLASH DRIVE

To create your Restore USB Flash Drive you will need a USB memory stick with a minimum capacity of 16GB. It is recommended that once your Restore USB Flash Drive has been created, it is stored in a safe place accessible to personnel who may be required to restore the system.

You will need to boot into the Windows Restore portal to begin the process of creating your Restore USB Flash Drive.

Switch on your machine and when the boot messages display the **Choose an operating system** screen, use the cursor keys to select Windows Restore as shown in the following dialogue.

It should be noted that the dialogue is only displayed briefly, approximately 3 seconds.

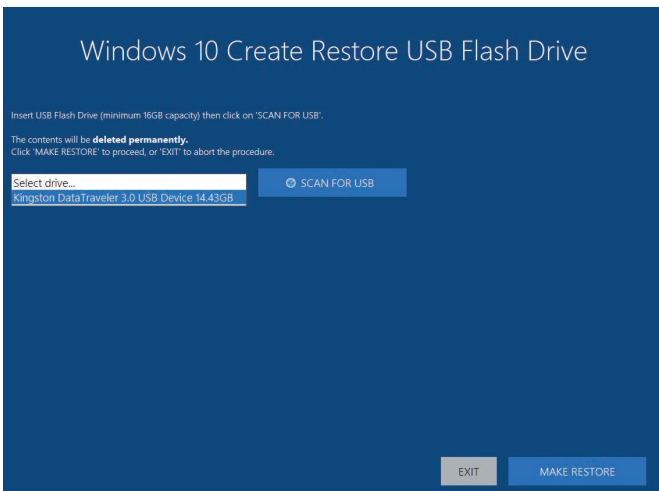


VSN400 Quick Start Guide

This will lead you to the Windows 10 Restore Menu as shown below:



Click on the 'Create Restore Media' icon then insert the USB flash drive into a vacant USB slot (min capacity 16GB).



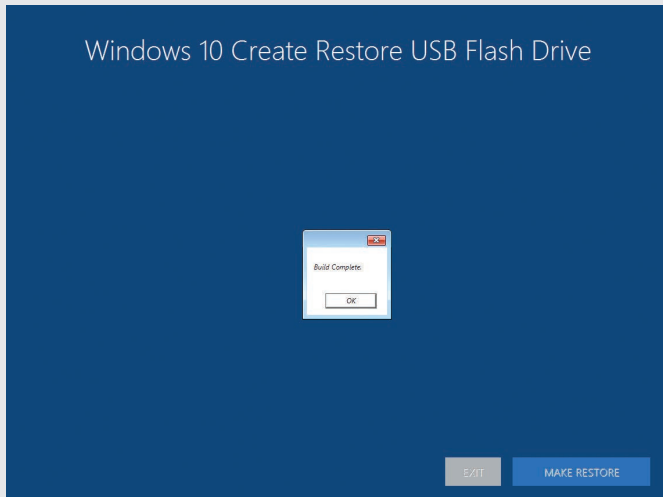
VSN400 Quick Start Guide

It should be noted that any data currently stored on the USB Flash Drive will be deleted permanently during this process.

Click on 'Scan for USB':

The application will now scan the system USB ports to detect your USB flash drive. Once the flash drive has been discovered, it will appear in the **Select Drive** dropdown list. Select the flash drive you wish to use from the list and click on 'Make Restore':

Once the Windows 10 Restore USB Flash Drive has been created a **Build Complete** dialogue is displayed:



Click on 'OK' to complete the process.

VSN400 Quick Start Guide

COPYRIGHT STATEMENT

© Datapath Ltd., England, 2020

Datapath Limited claims copyright on this documentation. No part of this documentation may be reproduced, released, disclosed, stored in any electronic format, or used in whole or in part for any purpose other than stated herein without the express permission of Datapath Limited.

Whilst every effort is made to ensure that the information contained in this Quick Start Guide is correct, Datapath Limited make no representations or warranties with respect to the contents thereof, and do not accept liability for any errors or omissions. Datapath reserves the right to change specification without prior notice and cannot assume responsibility for the use made of the information supplied. All registered trademarks used within this documentation are acknowledged by Datapath Limited.

CERTIFICATION

This device complies with part 15 of the FCC Rules. Operation is subject to the following two conditions: (1) This device may not cause harmful interference, and (2) this device must accept any interference received, including interference that may cause undesired operation.



Datapath Ltd declares that this product complies with the essential requirements and other relevant provisions of Directives 2014/30/EU, 2014/35/EU and 2015/863/EU.

A copy of our Declaration of conformity is available on request.

Datapath Limited

Bemrose House
Bemrose Park
Wayzgoose Drive
Derby, DE21 6XQ
UK

A full list of product compliance certifications can be found in the product User Guide.

VSN400 Quick Start Guide

NOTES

Datapath UK and

Corporate Headquarters

Bemrose House, Bemrose Park,
Wayzgoose Drive, Derby,
DE21 6XQ, United Kingdom

☎ +44 (0) 1332 294 441

✉ sales-uk@datapath.co.uk

Datapath North America

2490 General Armistead Avenue,
Suite 102, Norristown,
PA 19403, USA

☎ +1 484 679 1553

✉ sales-us@datapath.co.uk

Datapath France

☎ +33 (1)3013 8934

✉ sales-fr@datapath.co.uk

Datapath Germany

☎ +49 1529 009 0026

✉ sales-de@datapath.co.uk

Datapath China

☎ +86 187 2111 9063

✉ sales-cn@datapath.co.uk

Datapath Japan

☎ +81 (0)80 3475 7420

✉ sales-jp@datapath.co.uk

www.datapath.co.uk

