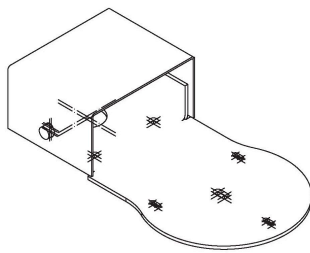
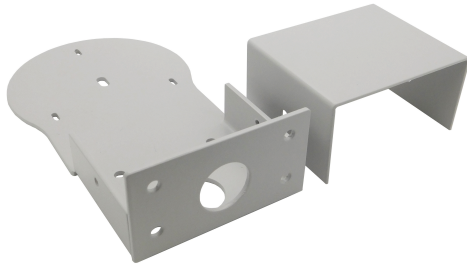


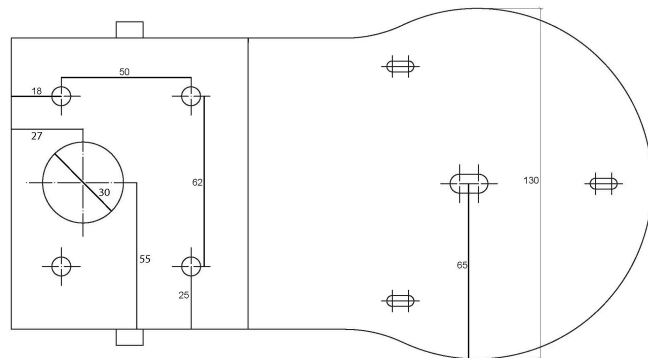
AV-MT200-W / AV-MT200-B

Avonic Wall Mount Black/White for CM40 & CM70 series

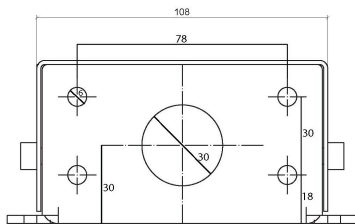
Wall mount for Avonic CM40 & CM70 series cameras.
Mounting plates are available in black and white.



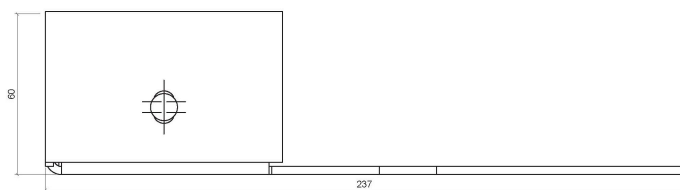
3D View



Top view



Rear View



Side View

Specifications

Color	Black, White	Black	AV-MT200-B
Dimensions product	2370 x 60 x 130 mm	White	AV-MT200-W
Weight	1.060 kg		
Included	MT200 Wall Mount, 1x Black 30MM Cover Cap, 1x 30MM Steel Ring, 1x 1/4"- UNC Pozidrive screw to fasten camera, M6*10mm 2x Allen Bolt screw, M3*6mm DIN9785 5x Pozidrive security screw		