

Vibrometer for Simple Diagnosis Use

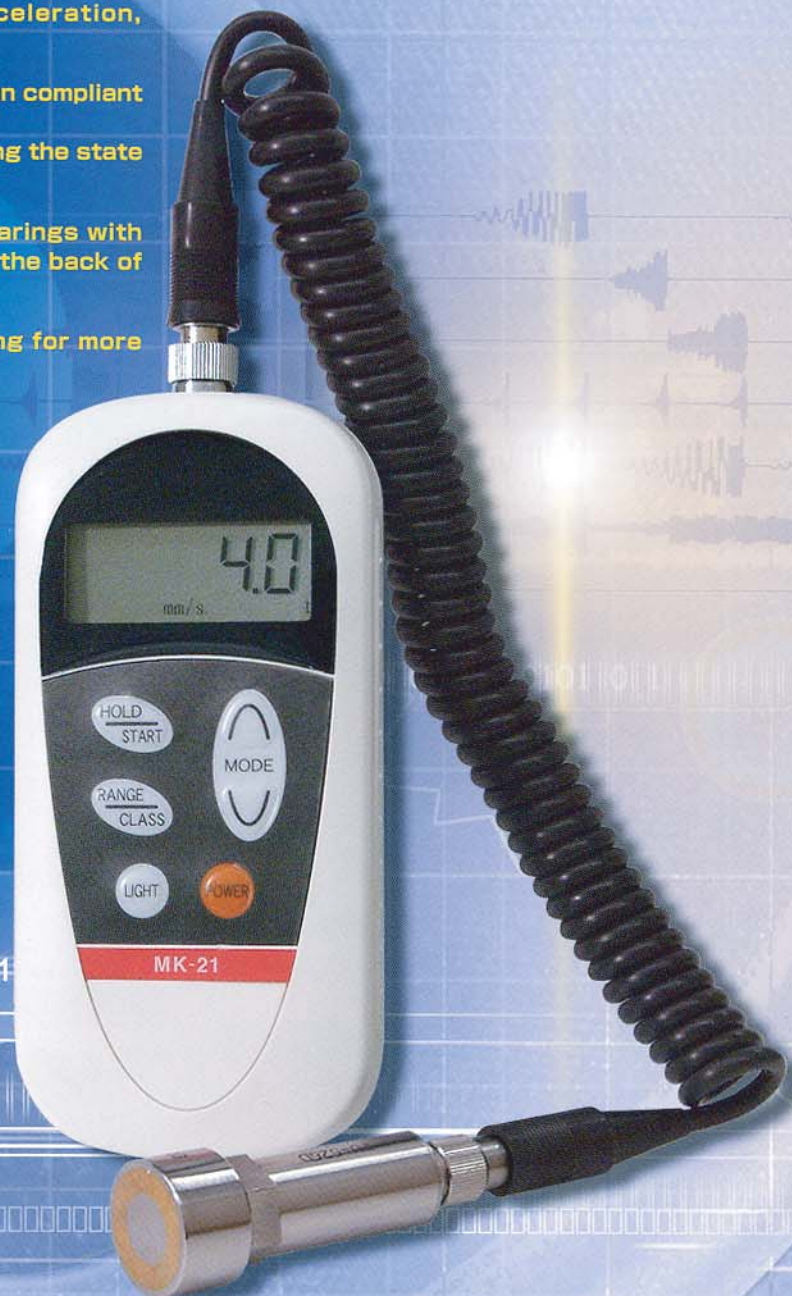
MK-21



An Easy to Operate, Portable Vibrometer with Diagnostic Function

Features

- Has 3 measurement modes: acceleration, velocity and displacement
- Equipped with a diagnostic function compliant with ISO 10816-1 (JIS B 0906). Capable of automatically diagnosing the state of rotary machines.
- Also allows easy diagnosis of bearings with assessment criteria indicated on the back of the main unit
- Capable of continuously operating for more than 8 hours with one AA cell battery (equipped with an auto turn-off function)
- Uses a vibration pickup provided with a magnet to ensure stable measurement accuracy
- Capable of measurement even in a dark place with a backlit display
- Attached with a firm carry case that allows you to easily carry and store the vibrometer



101

010110101010101011

01 010 1001 010

000.1

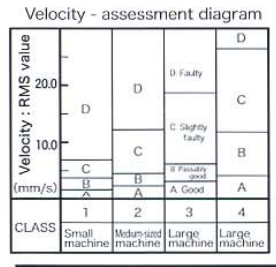
008.0

002.0

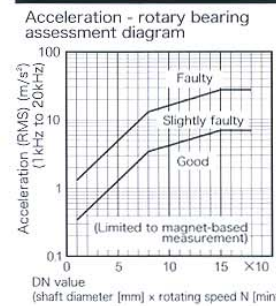
000.0



Equipped with an automatic diagnostic function compliant with vibration severity standards



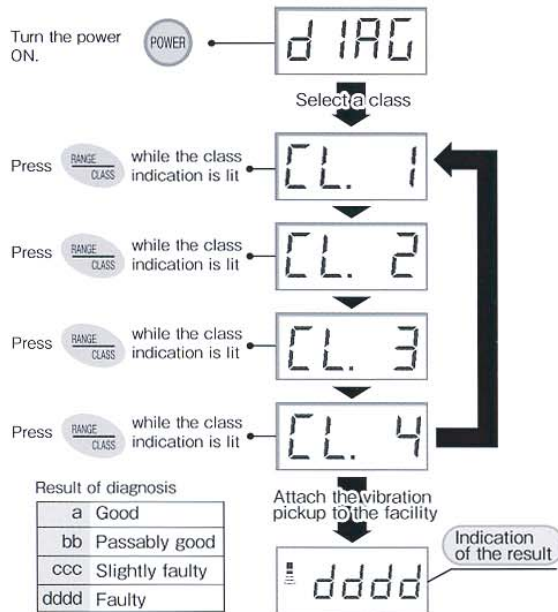
Vibrometer for simple diagnosis use model MK-21 is equipped with an automatic diagnostic function compliant with vibration severity standards (ISO-10816, JIS B 0906), allowing even those operators who have never used a vibrometer to diagnose the status of their facilities.



MK-21 also enables the user to assess whether a rotary bearing is a conforming article by referring to the assessment diagram provided on the back of the main unit.

※ The rotary bearing assessment diagram is an original standard of JFE Advantech Co., Ltd

Flow of diagnostic operation



Specifications

Sensor	Piezoelectric vibration pickup (with magnet)		
Measurement mode	Acceleration (ACC)		
	Acceleration peak (ACC PEAK)		
	Velocity (VEL)		
	Displacement (DISP)		
Measurement range		Low range	High range
	Acceleration	0.0~20.0m/s ²	0~200m/s ²
	Acceleration peak	0.0~20.0m/s ²	0~200m/s ²
	Velocity	0.0~20.0mm/s	0~200mm/s
	Displacement	0~200μm	0~1990μm
Measurement frequency range	Acceleration	: 1 kHz~20 kHz	
	Acceleration peak	: 1 kHz~20 kHz	
	Velocity	: 10 Hz~1 kHz	
	Displacement	: 10 Hz~1 kHz	
Arithmetic processing	Acceleration	: RMS value	
	Acceleration peak	: PEAK value	
	Velocity	: RMS value	
	Displacement	: P-P value	
Display type	LCD 4.5 digits with backlighting		
Low-battery indication	Low-battery mark appears on LCD		
Service temperature range	0 to 50-C (90% RH, no condensation)		
Storage temperature range	-10 to 60-C (90% RH, no condensation)		
Power source	AA alkali dry battery (x1), continuously operable for over 8 hours		
Outer dimensions	69W x 154H x 30D		
Mass	Approximately 140 g (including battery)		

Standard configuration

Main unit	MK-21	x1
Piezoelectric vibration pickup	PU-626D	x1
Magnet	MK-9002	x1
Curl cord	CD-C1-3N	x1
AA dry battery	LR-6	x1
Carry case		x1
Instruction manual		x1

Option

Vibration pickup (hand-held)	PU-601R-A
------------------------------	-----------

※ Bearing diagnosis with the assessment table is not available if the hand-held vibration pickup is used.

※ The catalog is subject to change without notice for improvement.

CHECK•LINE® PRECISION QUALITY CONTROL INSTRUMENTS

Electromatic Equipment Co., Inc.
600 Oakland Ave.
Cedarhurst, N Y 11516 —USA

Tel: (800) 645-4330 (USA & Canada)
Tel: (516) 295-4300
Fax: (516) 295-4399

Email: info@checkline.com
Website: www.checkline.com

FOR ADDITIONAL INFORMATION OR TO PLACE AN ORDER CALL TOLL FREE 1-800-645-4330