

# Image Graphics Cards

## Quick Start Guide

Image2K  
Image4K



Engineering the **world's best** visual solutions

  
**DATAPATH**  
EXCELLENCE BY DESIGN

# Image Graphics Quick Start Guide

Thank you for purchasing a Datapath Image Graphics card. The aim of this document is to quickly guide you through the process of initial setup.

For detailed information, the User Guide can be downloaded from [www.datapath.co.uk](http://www.datapath.co.uk).

## CONTENTS

Your packing box contains the following items:

- Your Image graphics card  
Image2K - DGC223 or,  
Image4K - DGC215

For latest drivers go to [www.datapath.co.uk](http://www.datapath.co.uk).

*Note: All Products are static sensitive and are packed in antistatic materials. Please keep the card in its packaging until you are ready to install.*



Image2K

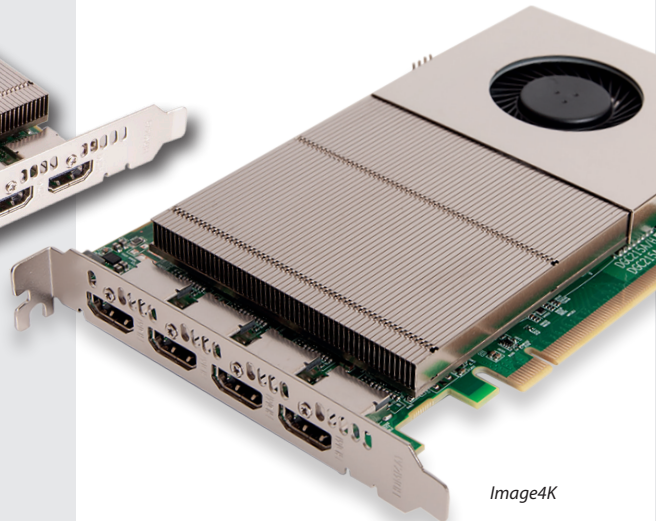


Image4K

## STEP 1 - HARDWARE INSTALLATION

Installing your Image graphics card is a simple process. In summary, the following steps need to be taken to be up and running in a few minutes:

1. Ensure that the Windows® System is set to standard single screen VGA resolution.
2. Locate a vacant PCI Express (x8 electrical, x16 physical) slot on the motherboard and remove the blanking plate. Retain all screws.
3. Ensure the required software has been installed (see software installation section).
4. Right click on the desktop and select the Display Driver Configuration Tool (DDCT) from the menu. Follow the instructions to configure your displays.

Full details of the DDCT can be found in application help file and the Image card User Guide located on the Datapath website.

[www.datapath.co.uk](http://www.datapath.co.uk)

# Image Graphics Quick Start Guide

## STEP 2 - SOFTWARE INSTALLATION

Download the required driver and install from the Datapath website, and follow the Installation Wizard instructions as prompted.

WDDM is the driver architecture used by modern Windows Operating Systems such as Windows 10. The Datapath WDDM driver currently provides support for up to 8 Image2K in a system or 6 Image4K cards.

Do not install both the Image2K and Image4K cards in the same system.

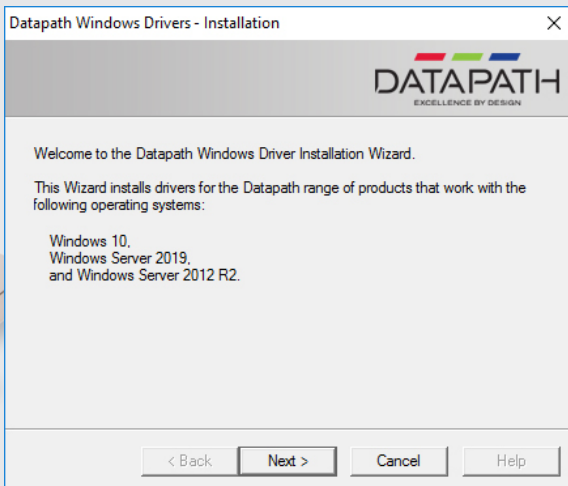
## COPYRIGHT STATEMENT

© Datapath Ltd., England 2020.

Datapath Limited claims copyright on this documentation. No part of this documentation may be reproduced, released, disclosed, stored in any electronic format, or used in whole or in part for any purpose other than stated herein without the express permission of Datapath Limited.

Whilst every effort is made to ensure that the information contained in this documentation is correct, Datapath Limited make no representations or warranties with respect to the contents thereof, and do not accept liability for any errors or omissions.

Datapath reserves the right to change specification without prior notice and cannot assume responsibility for the use made of the information supplied. All registered trademarks used within this documentation are acknowledged by Datapath Limited.



**Datapath UK and****Corporate Headquarters**

Bemrose House, Bemrose Park,  
Wayzgoose Drive, Derby,  
DE21 6XQ, United Kingdom

☎ +44 (0) 1332 294 441

✉ sales-uk@datapath.co.uk

**Datapath North America**

2490 General Armistead Avenue,  
Suite 102, Norristown,  
PA 19403, USA

☎ +1 484 679 1553

✉ sales-us@datapath.co.uk

**Datapath France**

☎ +33 (1)3013 8934

✉ sales-fr@datapath.co.uk

**Datapath Germany**

☎ +49 1529 009 0026

✉ sales-de@datapath.co.uk

**Datapath China**

☎ +86 187 2111 9063

✉ sales-cn@datapath.co.uk

**Datapath Japan**

☎ +81 (0)80 3475 7420

✉ sales-jp@datapath.co.uk

**[www.datapath.co.uk](http://www.datapath.co.uk)**

