

Copyright Statement

© Datapath Ltd., England, 2014

Datapath Limited claims copyright on this documentation. No part of this documentation may be reproduced, released, disclosed, stored in any electronic format, or used in whole or in part for any purpose other than stated herein without the express permission of Datapath Limited.

Whilst every effort is made to ensure that the information contained in this documentation is correct, Datapath Limited make no representations or warranties with respect to the contents thereof, and do not accept liability for any errors or omissions.

Datapath reserves the right to change specification without prior notice and cannot assume responsibility for the use made of the information supplied.

Datapath Limited acknowledges all registered trademarks used within this documentation.

Product	VisionAV-SDI Quick Start Guide
Classification	Released

UK Headquarters

Datapath Ltd.,
Bemrose House, Bemrose Park,
Wayzgoose Drive,
Derby,
DE21 6XQ,
United Kingdom

Tel: +44 (0) 1332 294441

Fax: +44 (0) 1332 290667

US Office

Datapath North America
2490 General Armistead Avenue
Suite 102
Norristown, PA 19403
USA

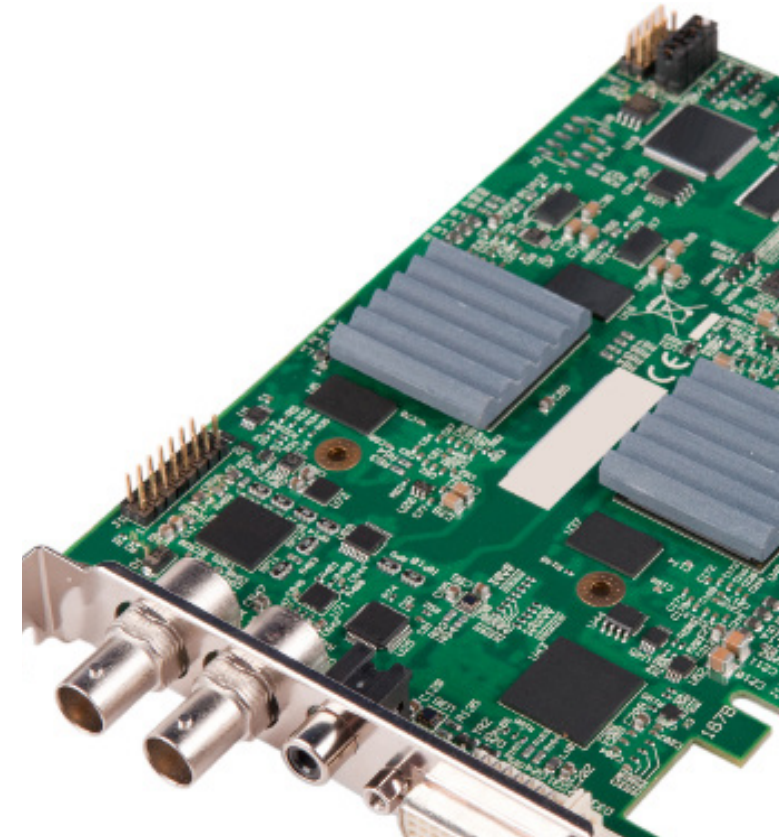
Tel: +1 484 679 1553

Email: sales@datapath.co.uk

Web: www.datapath.co.uk

VisionAV-SDI

Three Channel Audio and Video Capture Card



PACKING LIST

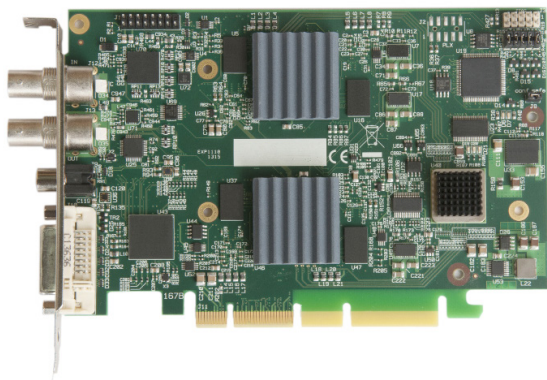
Your packing box should contain the following items:

The VisionAV-SDI data capture card.

(For latest drivers go to www.datapath.co.uk).

NOTE:

All plug-in cards are static sensitive and are packed in antistatic materials. Please keep the card in its packaging until you are ready to install.



HARDWARE INSTALLATION

You are likely to need a flat blade and /or a cross head screwdriver for the installation of the VisionAV-SDI card; it would be useful to have these to hand before you begin.

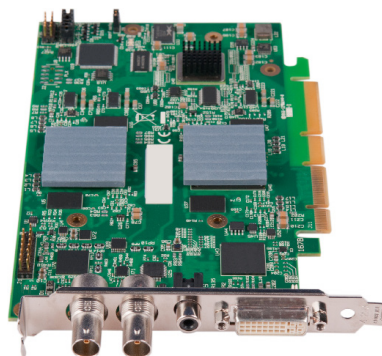
Power down the PC (including peripherals), switch off at the mains and disconnect all the cables connected to the computer, noting the positions for accurate reconnection. Remove the PC cover.

Locate a vacant PCI Express slot (x4 or higher) on the motherboard and remove the backing plate (retain all screws).

If in doubt consult your motherboard documentation to correctly identify a PCI Express slot.

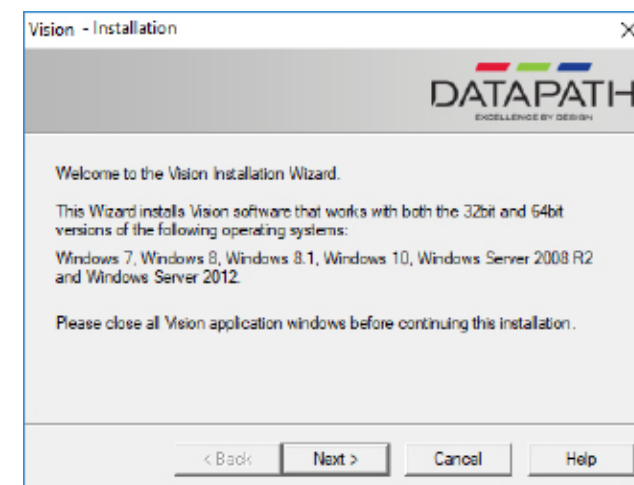
Remove the VisionAV-SDI card from its packaging and secure it firmly into the empty PCI Express slot.

Reconnect all cables to the PC then connect the cables distributing the required video signals to the connectors on the VisionAV-SDI card.



SOFTWARE INSTALLATION

Download the required driver **install.exe** from the Support pages on the Datapath website and follow the Installation Wizard instructions as prompted.



We suggest that you regularly visit the Datapath web site for information on updated drivers. www.datapath.co.uk

It is strongly recommended that you read the detailed help instructions on completion of the installation. Each help topic may be printed for ease of use.