

Copyright Statement

© Datapath Ltd., England, 2017

Datapath Limited claims copyright on this documentation. No part of this documentation may be reproduced, released, disclosed, stored in any electronic format, or used in whole or in part for any purpose other than stated herein without the express permission of Datapath Limited.

Whilst every effort is made to ensure that the information contained in this documentation is correct, Datapath Limited make no representations or warranties with respect to the contents thereof, and do not accept liability for any errors or omissions.

Datapath reserves the right to change specification without prior notice and cannot assume responsibility for the use made of the information supplied.

Datapath Limited acknowledges all registered trademarks used within this documentation.

| | |
|----------------|--------------------------------|
| Product | VisionLC-HD2 Quick Start Guide |
| Classification | Released |

UK Headquarters

Datapath Ltd.,
Bemrose House, Bemrose Park,
Wayzgoose Drive,
Derby,
DE21 6XQ,
United Kingdom

Tel: +44 (0) 1332 294441

Fax: +44 (0) 1332 290667

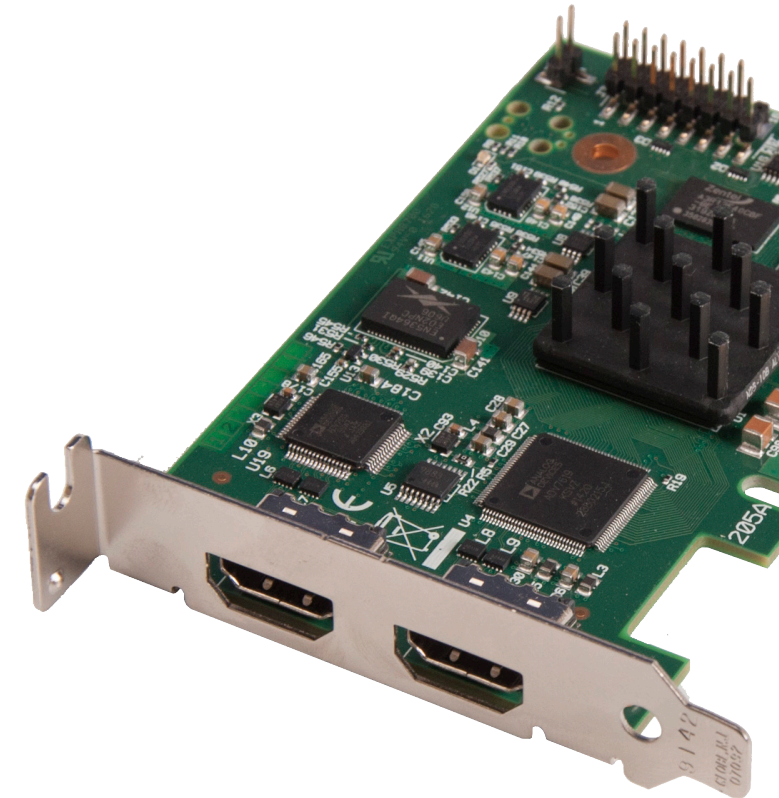
Email: sales@datapath.co.uk

Web: www.datapath.co.uk



VisionLC-HD2

Dual Channel Live Capture Card



PACKING LIST

Your packing box should contain the following items:

The VisionLC-HD2 - Dual channel live capture card.

Half height bracket.

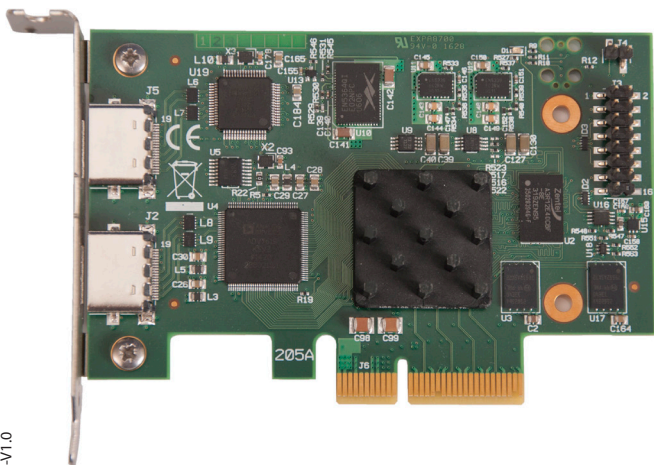
Installation CD-ROM.

(For latest drivers go to www.datapath.co.uk).

NOTE:

All plug-in cards are static sensitive and are packed in antistatic materials. Please keep the card in its packaging until you are ready to install.

This device complies with part 15 of the FCC Rules. Operation is subject to the following two conditions: (1) This device may not cause harmful interference, and (2) this device must accept any interference received, including interference that may cause undesired operation.



HARDWARE INSTALLATION

You are likely to need a flat blade and/or a cross head screwdriver for the installation of the VisionLC-HD2 card; it would be useful to have these to hand before you begin.

Power down the PC (including peripherals), switch off at the mains and disconnect all the cables connected to the computer, noting the positions for accurate reconnection. Remove the PC cover.

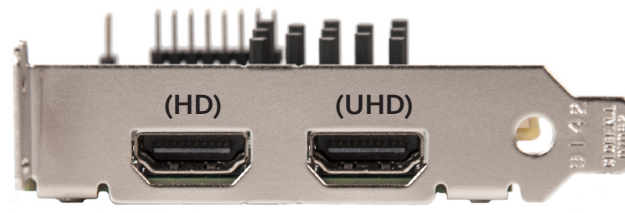
Locate a vacant PCIe slot (x4 or higher) on the motherboard and remove the backing plate (retain all screws).

If in doubt consult your motherboard documentation to correctly identify a PCIe (PCI-express) slot. If the card is forced into a 32 or 64 bit PCI or PCI-X slot it will be irreparably damaged when the system is powered up and the warranty will be void.

Remove the VisionLC-HD2 card from its packaging and secure it firmly into the empty PCIe slot.

Screw the VisionLC-HD2 bracket to the back panel of the PC and replace the cover. Connect the cable(s) (not supplied) distributing the signals to the connectors on the VisionLC-HD2 card.

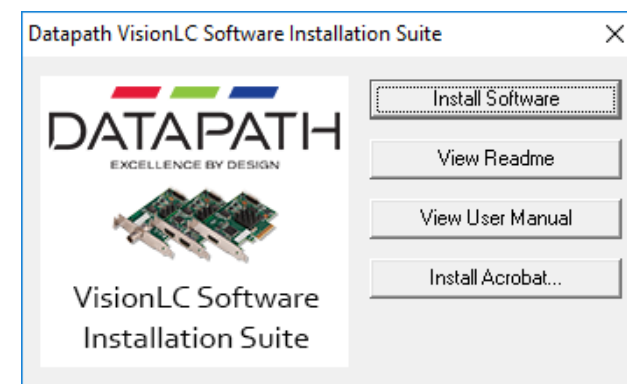
Reconnect all cables to the PC.



SOFTWARE INSTALLATION

Insert the Datapath CD into your CD drive, the CD will autorun and display the following dialogue. If the CD drive fails to autorun browse the CD and locate and double click the **setup.exe** file.

Click on **Install Drivers...** and follow the installation Wizard instructions as prompted.



We suggest that you regularly visit the Datapath web site for information on updated drivers. www.datapath.co.uk

It is strongly recommended that you read the detailed help instructions on completion of the installation. Each help topic may be printed for ease of use.