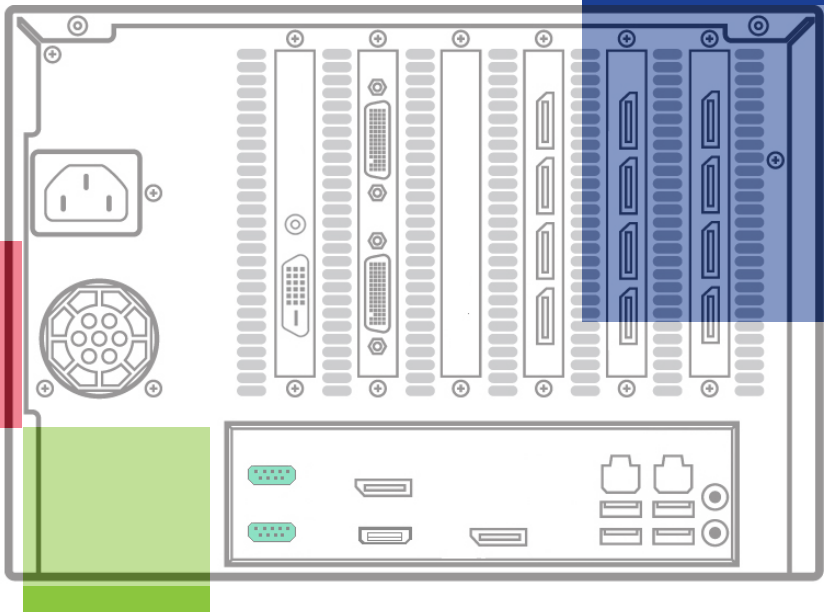




Quick Start Guide



Thank you for purchasing the Datapath iolite 600 wall controller. The aim of this document is to quickly guide you through the process of initial setup. For detailed instructions consult the system User Guide which can be found on the Documentation Media.

IOLITE 600 QUICK START GUIDE

Each Datapath iolite 600 is custom built to order therefore the components, number and type of inputs will differ from system to system.

Each iolite 600 is shipped with a printed diagram outlining the specific types of input(s) and where they are located on the rear panel of the system.

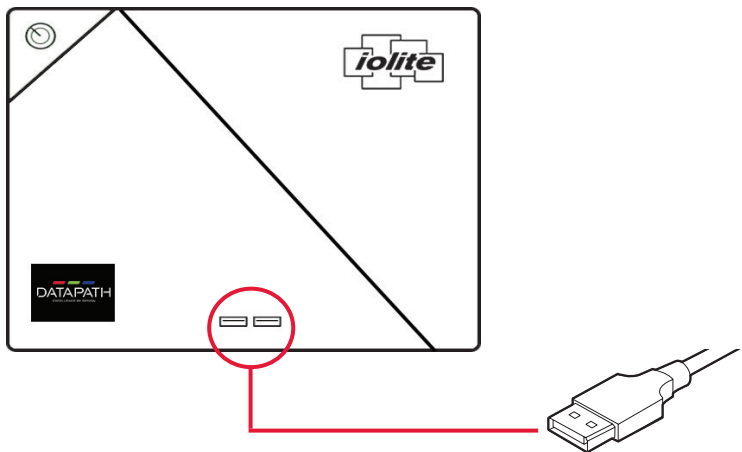
Any input cables supplied are clearly labeled and will indicate which of the video input connectors they relate to.

+ STEP 1 KEYBOARD AND MOUSE

Connect Keyboard and Mouse to USB Ports.

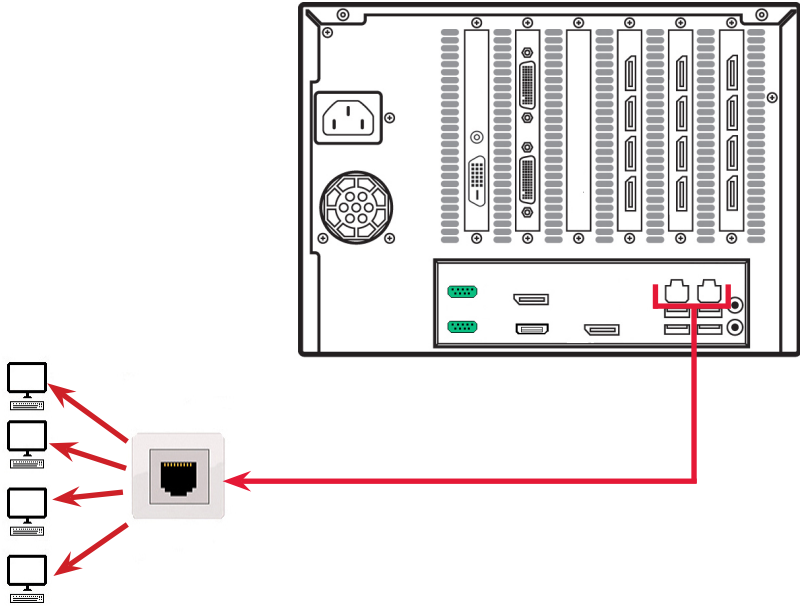
USB Ports are located on both the front and rear panels of the system. It may be more convenient to use the USB ports on the front for easy access.

- 4 x USB 3.0 ports on the rear panel
- 2 x USB 2.0 ports on the front panel



+ STEP 2 CONNECT TO A NETWORK (OPTIONAL)

If the iolite 600 is to be used over a network, connect it to a network point (cables not supplied) using one of the LAN connectors on the rear panel.

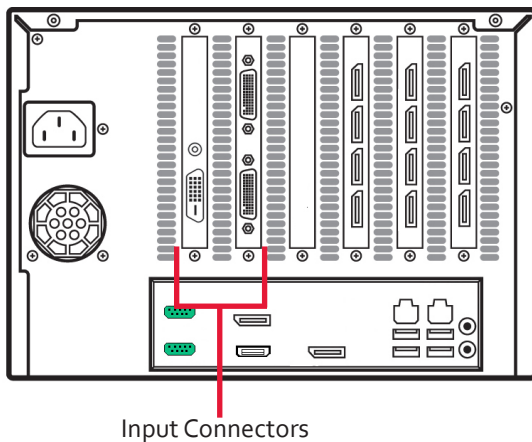


+ STEP 3 CONNECT INPUT SOURCES

As each iolite 600 is custom built, the number and type of video inputs will differ from system to system. If you have purchased an iolite 600 with video inputs, the input connectors are located on the rear panel as shown below.

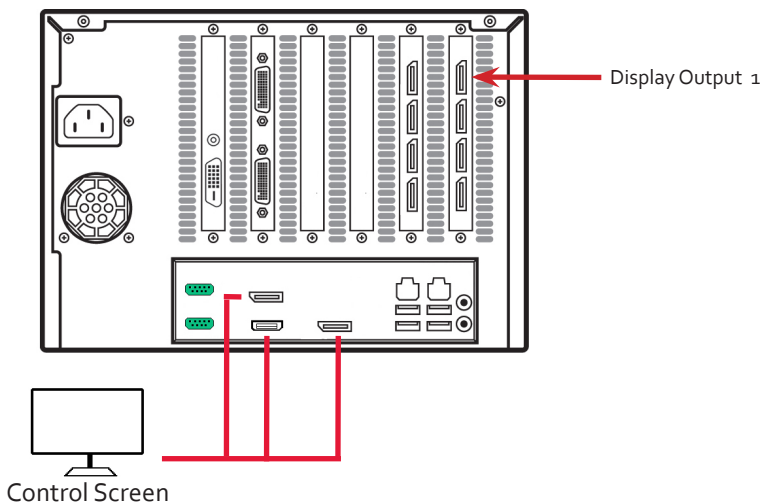
The printed diagram shipped with the iolite 600 shows the types of input and connectors built into your specific system.

Connect the input sources to the relevant input connectors, cables may be supplied for some inputs. See content list for details.



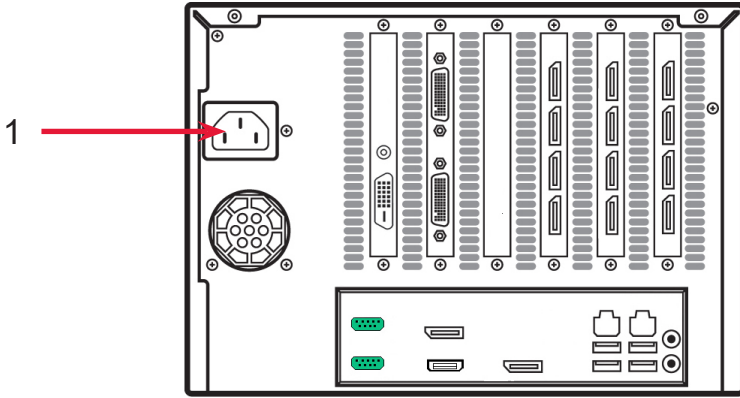
+ STEP 4 CONNECTING A CONTROL SCREEN

Your iolite 600 is factory configured to use a control screen connected to the system internal graphics device. Connect your control screen to one of the three connectors on the motherboard panel on the rear of the iolite 600. A control screen is initially required to set up the system including the operating system (Windows 10).

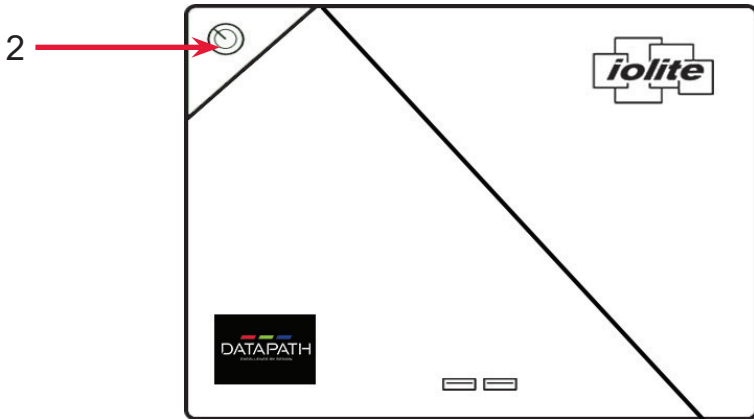


If a control screen is unavailable, connect a single video wall display into the Display Output 1 connector on the rear of the iolite 600.

+ STEP 5 POWERING UP THE SYSTEM



1 Connect power cables then plug into a mains supply.



2 Switch on the system.

Press the on/off button (2) to power up the iolite 600. There will be a short delay followed by the sound of the internal fan. The fan noise will subside when the system has fully booted.

+ STEP 6 WINDOWS 10 SETUP

Once the system has been built and configured in our factory the operating system is resealed, therefore when switching the system on for the first time, the operating system setup commences. You will be prompted to enter information to set up the Windows 10 operating system.

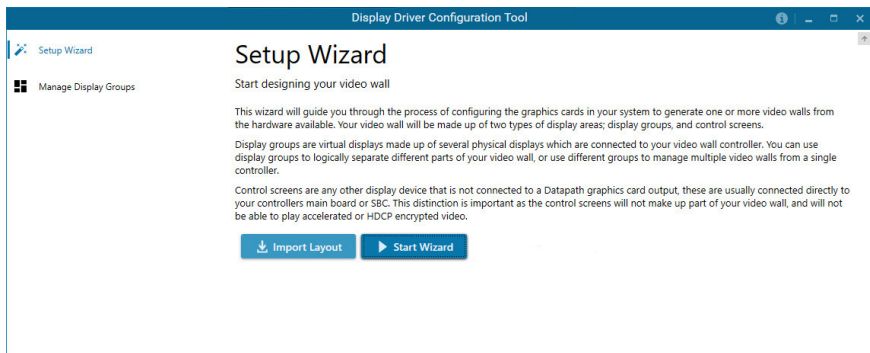
There is no requirement for users to activate Windows 10, activation is done automatically. An internet connection is required to complete the automatic activation.

+ STEP 7 DISPLAY WALL CONFIGURATION

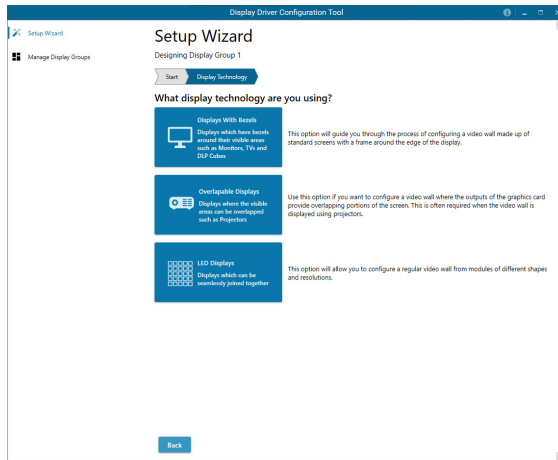
Once the Windows 10 setup is complete, the system will reboot and the control screen will show a Windows desktop displaying the Display Driver Configuration Tool (DDCT). The DDCT will guide you, step by step, through the configuration of the graphics outputs, enabling you to quickly create one or more video walls.

On the final stage of the configuration, the DDCT will recommend the optimum way to connect your iolite 600 to your video wall displays.

A full description of the DDCT can be found in the User Guide located on the Documentation Media.



It is recommended that you carefully read the instructions on each page of the wizard. To commence your wall configuration, click on "Start Wizard".

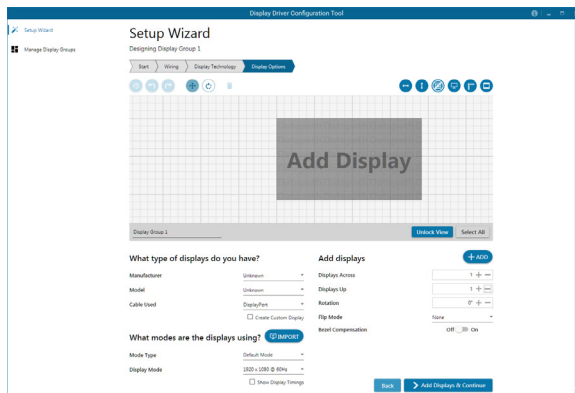


Select the type of displays being used on your wall:

- Displays With Bezels – Monitors, TVs and DLP Cubes.
- Overlapable Displays – Projectors.
- LED Displays.

Click on "Continue".

The tool will then display a configuration page for the type of display you selected.



What Type of Displays do you Have?

Use the Manufacturer and Model dropdown lists to select the displays you are using for your wall. If the wall consists of different displays, select each one in turn to configure the type of display. The DDCT has an extensive database of displays, however if your display is not contained in the list, you can input the details manually by selecting Create Custom Display.

It is strongly recommended that measurements are taken from the display manufacturer's specifications if available.

What type of displays do you have?

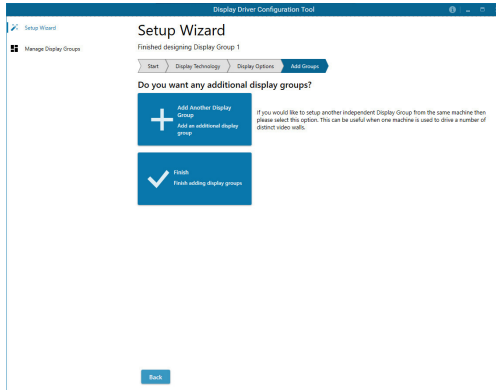
Manufacturer	Unknown
Model	Unknown
Cable Used	DisplayPort
	<input checked="" type="checkbox"/> Create Custom Display
Display Area Width	192 cm
Display Area Height	108 cm
Left Bezel	0 cm
Right Bezel	0 cm
Top Bezel	0 cm
Bottom Bezel	0 cm

Add Displays

Add Displays is available for displays with bezels or overlapable displays. Use the Displays Across and the Displays Up to create your Display Group. Once created, configure the displays using What Type of Displays Do You Have? When using overlapable displays Display Overlap becomes available, enabling you to select a percentage of overlap between displays.

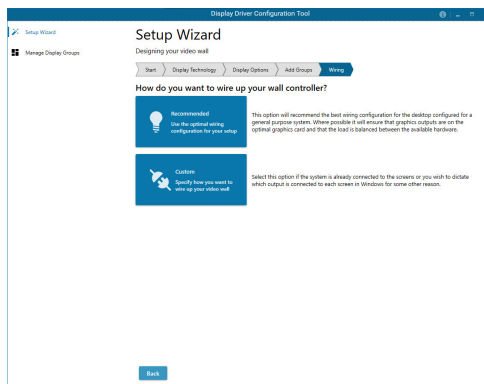
Add displays	<input type="button" value="+ ADD"/>
Displays Across	1
Displays Up	1
Rotation	0°
Flip Mode	None
Bezel Compensation	Off <input type="checkbox"/> On <input type="checkbox"/>

Once the layout has been created and the type(s) of displays configured click on Add Displays & Continue and the following dialogue is displayed:



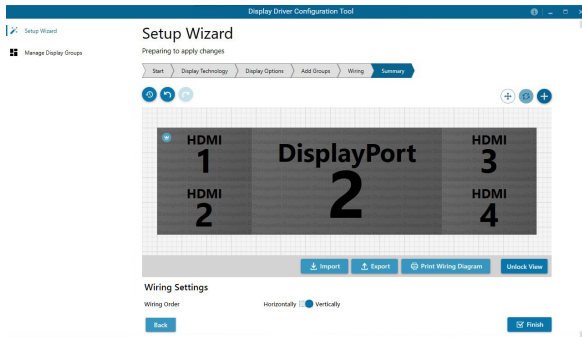
At this stage of the set up you can choose to create another independent display group from the same system, this would be considered if one machine will be used to drive a number of separate video walls. See User Guide for more details.

If another display group is not required, click on **Finish** and the following page is displayed:



The DDCT can recommend the best wiring configuration for your system, ensuring the load is balanced between the graphics hardware. Click on **Recommended** for the optimal configuration for your system.

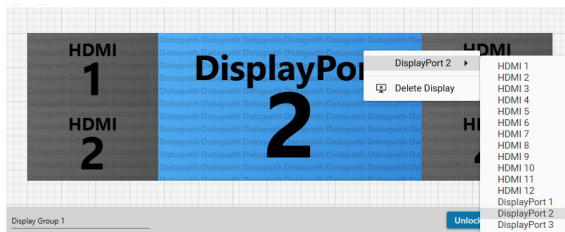
Should you wish to manually wire your system and decide for yourself which output is connected to which display, click on **Custom**. You will be next be presented with the Summary page:



If you chose to have the DDCT configure your wiring this page will display the recommended connections, as shown above. Connect each display to the corresponding output connector on the rear of the iolite 600. If your iolite 600 is connected to a printer, you can print a copy of the wiring diagram using Print a Wiring Diagram.

Note: The Datapath Diagnostic Suite must be installed to print a wiring diagram. The suite can be downloaded from the Datapath website downloads page.

To manually select the outputs right click on the display group and select Edit, you can then select each individual display and allocate your preferred output . Right click on a selected display to reveal the list of outputs available:



When all outputs have been allocated by either Recommended or Custom click on Finish. You will then be prompted to save the changes to your video wall and restart your system. When restarted, the Windows Desktop will be displayed across the wall.

You can access the configuration tool at anytime should you wish to make changes. Right click on the desktop and select Display Driver Configuration Tool from the menu.

+ STEP 8 WALLCONTROL 10

Before opening the WallControl 10 Client interface you may need to start the WallControl 10 Server should it not start automatically. The Server icon is displayed in the System Tray.

Server icon 

If the Server fails to start automatically, start the Server by clicking on it in the "All Programs" menu. The WallControl 10 Client will only detect servers that are running.

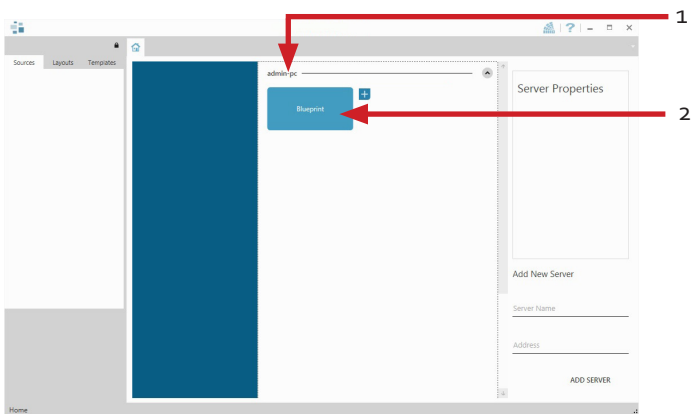


Start | All Programs | WallControl 10 - Server

Open the WallControl 10 Client

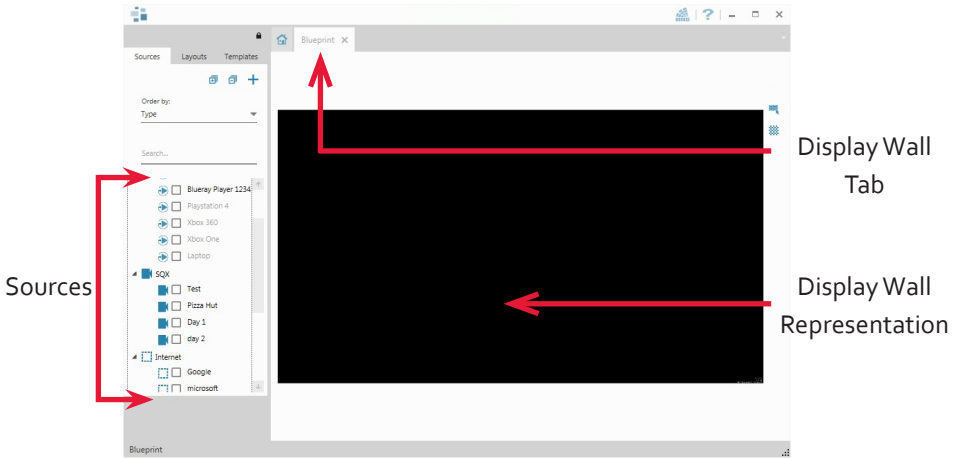


Start | All Programs | WallControl 10 - Client



1	Indicates the server you are connected to.
2	A representation of the wall associated with the server.

Click on the wall representation to open the display wall tab (2).



When opened, the display wall tab shows a live representation of the physical wall and the sources available to display on it. To place a source on the video wall, simply click on the required source in the Sources Tab and drag it onto a preferred position on the display wall representation.

The application help file is accessed using the question mark icon (?) located on the top right of the WallControl 10 Client. The help file contains information explaining how multiple sources can be selected, how to use and create templates, how to save, recall and share layout files and manage walls.

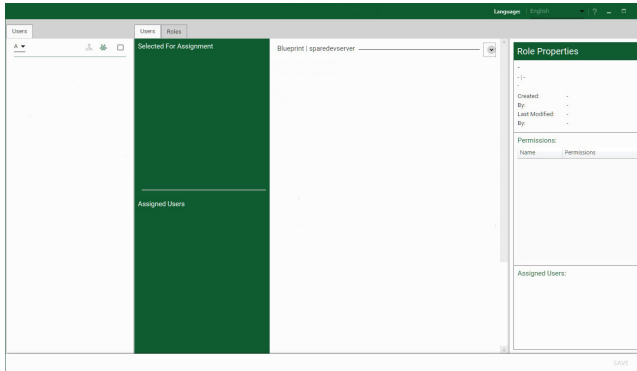
The WallControl 10 - Security Administration Client (Only Available with WallControl 10 Pro)

A WallControl 10-Pro serial dongle must be inserted into a vacant USB port. If the dongle is removed or swapped, the Security Client will not open and an error message is displayed, therefore it is important the dongle is not removed.

If you have purchased WallControl 10 Pro, the licence dongle can be located in the accessories box.



Start | All Programs | WallControl 10 - Security Administration Client



The WallControl 10 - Security Administration Client allows Administrators to assign specific users to roles on a wall by wall basis. For example, a user can be assigned a role allowing unrestricted access on one wall but assigned a role on another wall which only allows the opening of pre-determined layouts.

Prior to the Security Client being used for the first time, the SecurityOnOff.exe program must be running to enable security protection for the application. To manually run the SecurityOnOff.exe, ensure you are logged into Windows® with Administrator Rights.

Locate and double click on the SecurityOnOff.exe file:

Program Files|WallControl 10| Security Server|SecurityOnOff

The WallControl 10 Security Application help file contains information on how to:

- Import users from the Windows Active Directory into the database.
- Create and edit roles.
- Assign permissions to providers, layouts and sources giving specific roles access to them.
- Assign roles to walls.

Notes:



EU – Class A Declaration of Conformity

Datapath Ltd declares that this product complies with the essential requirements and other relevant provisions of Directives 2014/30/EU, 2014/35/EU and 2015/863/EU.

A copy of our Declaration of Conformity is available on request.

Datapath Limited
Bemrose House
Bemrose Park
Wayzgoose Drive
Derby, DE21 6XQ
UK

A full list of product compliance certifications can be found in the product User Guide on the Recovery Media supplied with the system.

© Datapath Ltd., England, 2016

Datapath Limited claims copyright on this documentation. No part of this documentation may be reproduced, released, disclosed, stored in any electronic format, or used in whole or in part for any purpose other than stated herein without the express permission of Datapath Limited.

Whilst every effort is made to ensure that the information contained in this Quick Start Guide is correct, Datapath Limited make no representations or warranties with respect to the contents thereof, and do not accept liability for any errors or omissions. Datapath reserves the right to change specification without prior notice and cannot assume responsibility for the use made of the information supplied. All registered trademarks used within this documentation are acknowledged by Datapath Limited.

Datapath UK and Corporate Headquarters

Bemrose House, Bemrose Park
Wayzgoose Drive
Derby, DE21 6XQ
England

☎ +44 (0) 1332 294441
✉ sales@datapath.co.uk

Datapath North America

2490 General Armistead Avenue,
Suite 102, Norristown,
PA 19403,
USA

☎ +1 484 679 1553
✉ sales@datapath.co.uk

Datapath France

☎ +33 (1)3013 8934
✉ sales-fr@datapath.co.uk

Datapath Germany

☎ +49 1529 009 0026
✉ sales-de@datapath.co.uk

Datapath China

☎ +86 187 2111 9063
✉ sales-cn@datapath.co.uk

Datapath Japan

☎ +81 (0)80 3475 7420
✉ sales-jp@datapath.co.uk

Product	iolite 600 Quick Start Guide
Classification	Release
Version Number	3.1.0