

## Copyright Statement

© Datapath Ltd., England, 2021

Datapath Limited claims copyright on this documentation. No part of this documentation may be reproduced, released, disclosed, stored in any electronic format, or used in whole or in part for any purpose other than stated herein without the express permission of Datapath Limited.

Whilst every effort is made to ensure that the information contained in this documentation is correct, Datapath Limited make no representations or warranties with respect to the contents thereof, and do not accept liability for any errors or omissions.

Datapath reserves the right to change specification without prior notice and cannot assume responsibility for the use made of the information supplied.

Datapath Limited acknowledges all registered trademarks used within this documentation.

Product	VisionSC-HD4+ Quick Start Guide
Classification	Released

## UK Headquarters

Datapath Ltd.,  
Bemrose House, Bemrose Park,  
Wayzgoose Drive,  
Derby,  
DE21 6XQ,  
United Kingdom

**Tel:** +44 (0) 1332 294441

**Fax:** +44 (0) 1332 290667

## US Office

Datapath North America  
2490 General Armistead Avenue,  
Suite 102  
Norristown, PA 19403  
USA

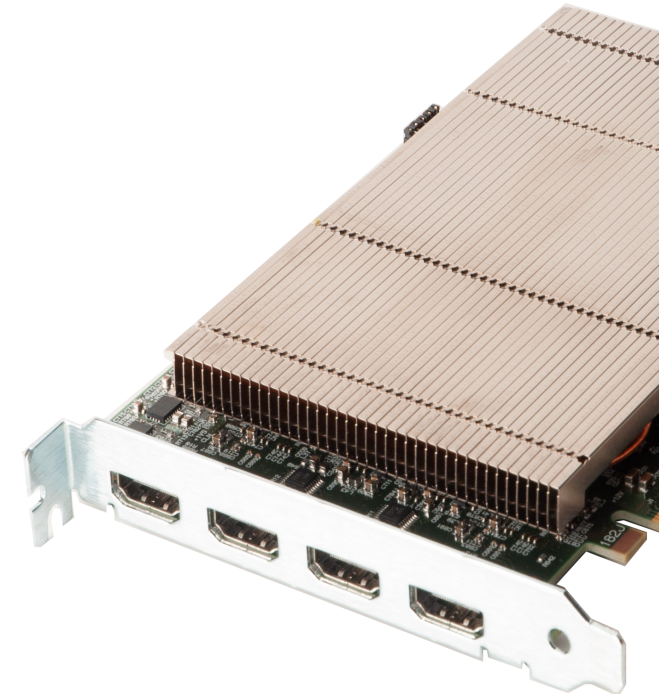
**Tel:** +1 484 679 1553

**Email:** [sales@datapath.co.uk](mailto:sales@datapath.co.uk)

**Web:** [www.datapath.co.uk](http://www.datapath.co.uk)

# VisionSC-HD4+

## Audio and Video Capture Card



## PACKING LIST

Your packing box should contain the following items:

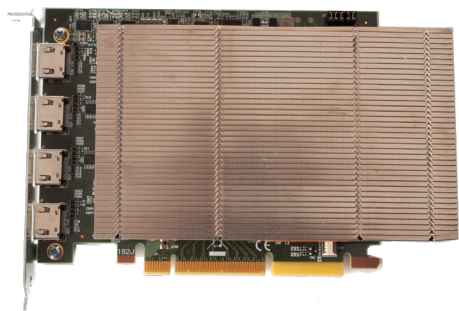
The VisionSC-HD4+ - Quad HDMI video capture card.

2 x DVI to HDMI adaptors (Only required for the Vision-SC-HD4+/D)

(For latest drivers go to [www.datapath.co.uk](http://www.datapath.co.uk)).

### NOTE:

All plug-in cards are static sensitive and are packed in antistatic materials. Please keep the card in its packaging until you are ready to install.



## HARDWARE INSTALLATION

You are likely to need a flat blade and/or a cross head screwdriver for the installation of the VisionSC-HD4+ card; it would be useful to have these to hand before you begin.

Power down the PC (including peripherals), switch off at the mains and disconnect all the cables connected to the computer, noting the positions for accurate reconnection. Remove the PC cover.

Locate a vacant x8 Gen3 PCIe slot on the motherboard and remove the backing plate (retain all screws).

**If in doubt consult your motherboard documentation to correctly identify a PCIe (PCI-express) slot.**

Remove the VisionSC-HD4+ card from its packaging and secure it firmly into the empty PCIe slot.

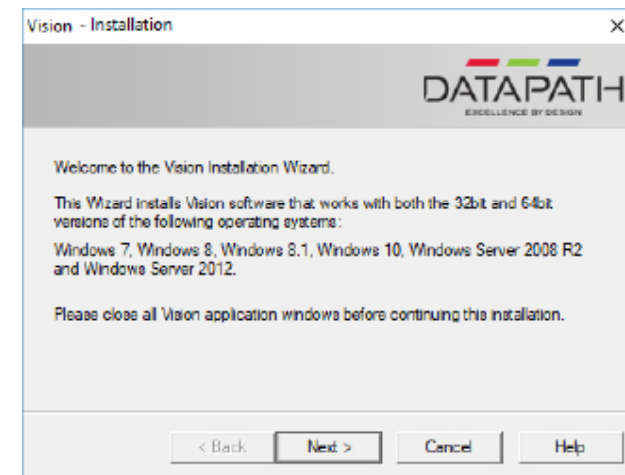
Screw the VisionSC-HD4+ bracket to the back panel of the PC and replace the cover. Connect the cable(s) (not supplied) distributing the signals to the splitter cable(s) connected to the VisionSC-HD4+ card.

Reconnect all cables to the PC.



## SOFTWARE INSTALLATION

Download the the required driver install.exe from the Support pages on the Datapath website and follow the Installation Wizard instructions as prompted.



We suggest that you regularly visit the Datapath web site for information on updated drivers. [www.datapath.co.uk](http://www.datapath.co.uk)

**It is strongly recommended that you read the detailed help instructions on completion of the installation. Each help topic may be printed for ease of use.**