

IP Outdoor Fixed Lens Bullet Cameras with IR



EL-IP-OBF4-WH

EL-IP-OBF2-WH

- AUTO DISCOVER CONFIGURE**
- BULLET**
- OUTDOOR/INDOOR**
- FIXED**
- 4MP**
- 2MP**

The Right Tool for the Job.

The ELAN EL-IP-OBF2 and EL-IP-OBF4 bullet cameras are the perfect solution when a weather resistant camera is needed survey a designated area such as a driveway, garage, front door, back door, stairway, hallway or entryway.

The relatively visible bullet form factor can have an effective deterrent effect in places where you want people to know that they can be seen.

The ELAN EL-IP-OBF2 and EL-IP-OBF4 bullet cameras are IP66 weather resistant and flexible in terms of placement, and can be mounted on walls, soffits, or under eaves. They are also quick and easy to install.

ELAN Discovery

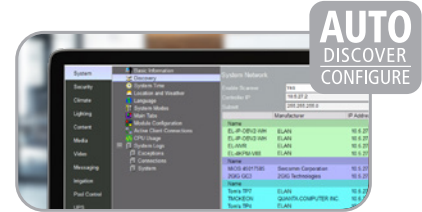
Like all other ELAN Surveillance products, the ELAN EL-IP-OBF2 and EL-IP-OBF4 are embedded with the ELAN beacon, making them effortless to install in an ELAN system. In the Configurator, ELAN

Discovery scans your network, both wired and wireless, automatically discovering the SSIDs of available devices. With a click, the camera is configured and installed in the ELAN system. We've eliminated the need to use a secondary application to setup the device outside of ELAN—saving you substantial time on every surveillance installation.

The ELAN EL-IP-OBF2 and EL-IP-OBF4 cameras have the quality, reliability, best-in-class features and ELAN customer support that you and your clients rely on.

Comprehensive Surveillance

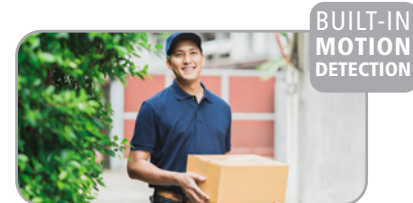
ELAN Surveillance cameras work seamlessly with the ELAN Network Video Recorder (EL-NVR Series) to create a surveillance ecosystem that excels in every application.



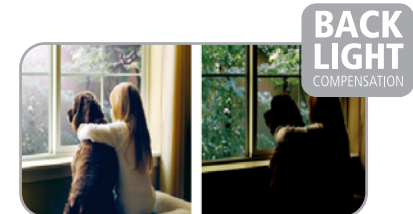
ELAN surveillance cameras feature one-click camera setup with ELAN Discovery.



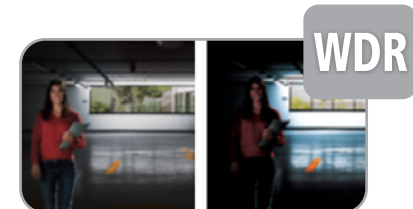
Illumination from Infrared (IR) LEDs enables night vision up to 30 meters.



Motion in front of the camera will be detected and saved as an event.



Back Light Compensation adjusts the exposure of the image to properly expose the subject of interest.



Wide Dynamic Range improves image quality by balancing dark and light areas in an image.

EL-IP-OBF2 | EL-IP-OBF4 IP Outdoor Fixed Lens Bullet Cameras with IR



ORDER NOS. EL-IP-OBF2-WH, EL-IP-OBF4-WH



FEATURES

- Auto-Discover/Auto-Configure
- 4 Megapixel or 2 Megapixel
- High Dynamic Range (HDR)
- 30m IR Distance
- 4mm Fixed Lens
- Advanced Built-in Motion Analytics
- IP66 Weather Resistant
- Micro SD Card Slot
- Automatic Gain Control (AGC)
- Operating Temperature: -40°F – 122°F
- Max Frame Rate: 30FPS @ 1920x1080
- 3D Digital Noise Reduction
- 2D Wide Dynamic Range
- Power Over Ethernet (PoE)

INCLUDED IN THE BOX:

- (1) Camera
- (1) Quick Installation Guide
- (1) Mounting Template
- (3) Mounting Hardware

SPECIFICATIONS	
Power Consumption	DC12V, 5.2W / PoE, 6.6W (IEEE 802.3af)
Dimensions	2.7" x 2.7" x 7.3"
Weight	15.9 oz
Operating Temperature	-40°F – +122°F (-40°C – +50°C)
Angle of View	EL-IP-OBF2: (H) 90° (V) 45° (D) 107° EL-IP-OBF4: (H) 84° (V) 44° (D) 100°
IR Range	30m
Alarm Event Triggers	Motion/Tamper/Network lost detection
Alarm Event Actions	FTP, SMTP, HTTP post, SD card, SAMBA
SD Card Recording	Support Micro SD/SDHC/SDXC (up to 128GB) card for circular recording (card is not included)
CPU Memory	Embedded SoC ARM Cortex-A9, 600MHz, 256MB DDR3, 256MB flash memory
Intelligent Video Surveillance	Advanced motion detection, Tripwire detection, Semaphore + Tripwire detection, Object counting
Certifications	CE: Class B, FCC: Class B, IP66 Weather Resistant, Vandal Rating IK10

VIDEO	
Video compression	Smart H.264/ H.264 High/Main Profile, Motion JPEG
Maximum Frame Rate	H.264 and MJPEG: : up to 30 FPS @ 1920 x 1080
Day/Night (IR-cut filter)	Color (Day), Monochrome (Night), Auto, Schedule
Scanning system	Progressive scan
Back Light Compensation	On / Off
2D WDR	Off / Auto / x2 / x3 / x4
High Dynamic Range (HDR)	Up to 100dB
3D Noise Reduction	Off / 1 to 32 selectable
Privacy Masking	Off / On (4 independent areas)
Sense Up	Off / 1 frame / 2 frames
Sense Up+	Yes
Auto Gain Control	42 dB variable gain
Other Functions	Sharpness, Hue, Image flip, Image mirror
Lens Distortion Correction (LDC)	Yes

NETWORK	
Ethernet	10Base-T / 100Base-TX, RJ-45
On-Screen Display (OSD)	Text over date, time, and camera name
Protocols	IPv4, IPv6, TCP, UDP, HTTP, HTTPS, SMTP, MQTT, QoS, SNMP, SNMP Trap, NTP, DDNS, UPnP, FTP, ARP, DHCP, PPPoE, DNS, RTSP, RTP, Telnet, ICMP, IGMP, SDDP, Bonjour
Multi IP Addresses	Yes



elancontrolsystems.com