

# IP Outdoor Fixed Lens Dome Cameras with IR



EL-IP-ODF4-WH

EL-IP-ODF2-WH

- AUTO DISCOVER CONFIGURE**
- OUTDOOR/INDOOR**
- DOME**
- FIXED**
- 4MP**
- 2MP**

## Flexible Outdoor Surveillance.

The ELAN EL-IP-ODF2 and EL-IP-ODF4 dome surveillance cameras are the perfect solution when a weather resistant camera is needed to survey a wide area such as a large front porch, backyard or driveway, and a visually unobtrusive camera is desired.

The relatively inconspicuous dome form factor of the ELAN EL-IP-ODF2 and EL-IP-ODF4 is effective in places where it is preferable that people do not necessarily know that they may be observed.

The ELAN EL-IP-ODF2 and EL-IP-ODF4 dome cameras are IP66 weather resistant and flexible in terms of placement, able to be mounted on ceilings, soffits, or under eaves. They are quick and easy to install.

### ELAN Discovery

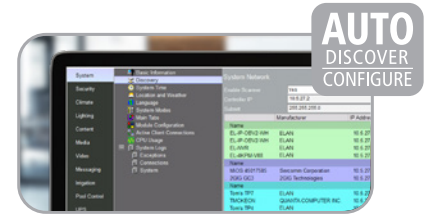
Like all ELAN Surveillance products, the ELAN EL-IP-ODF2 and EL-IP-ODF4 are embedded with

the ELAN beacon, making them effortless to install in an ELAN system. In the Configurator, ELAN Discovery scans your network, both wired and wireless, automatically discovering the SSDIs of available devices. With a click, the camera is configured and installed in the ELAN system. We've eliminated the need to use a secondary application to setup the device outside of ELAN, saving you substantial time on every surveillance installation.

The ELAN EL-IP-ODF2 and EL-IP-ODF4 cameras have the quality, reliability, best-in-class features and ELAN customer support that you and your clients rely on.

### Comprehensive Surveillance

ELAN Surveillance cameras work seamlessly with the ELAN Network Video Recorder (EL-NVR Series) to create a surveillance ecosystem that excels in every application.



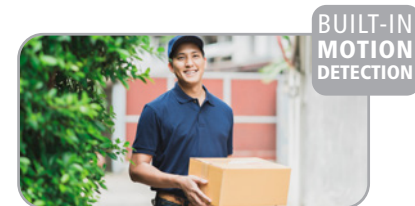
**AUTO DISCOVER CONFIGURE**

ELAN surveillance cameras feature one-click camera setup with ELAN Discovery.



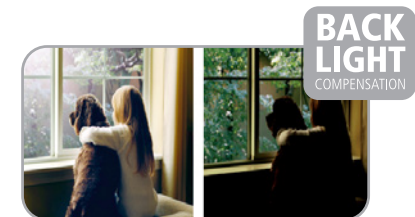
**IR ILLUMINATION**

Infrared (IR) LEDs for IR illumination to provide night vision up to 30 meters.



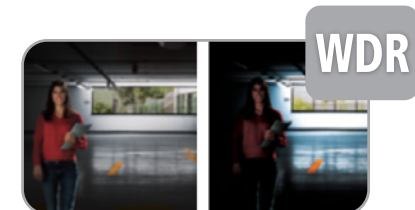
**BUILT-IN MOTION DETECTION**

Motion in front of the camera will be detected and saved as an event.



**BACK LIGHT COMPENSATION**

Back Light Compensation adjusts the exposure of the image to properly expose the subject of interest.



**WDR**

Wide Dynamic Range improves image quality by balancing dark and light areas in an image.

# EL-IP-ODF2 | EL-IP-ODF4 IP Indoor/Outdoor Fixed Lens Dome Cameras with IR



ORDER NOS. EL-IP-ODF2-WH, EL-IP-ODF4-WH



## FEATURES

- Auto-Discover/Auto-Configure
- 4 Megapixel or 2 Megapixel
- High Dynamic Range (HDR)
- 30m IR Distance
- 4mm Fixed Lens
- Lens Distortion Correction
- Advanced Built-in Motion Analytics
- Micro SD Card Slot
- Alarm In/Out
- 2-Way Audio Support
- Automatic Gain Control (AGC)
- Operating Temperature: -13°F – 122°F
- Max Frame Rate: 20FPS @ 2688x1520
- 3D Digital Noise Reduction
- 2D Wide Dynamic Range
- Power Over Ethernet (PoE)

## INCLUDED IN THE BOX:

- (1) Camera
- (1) Quick Installation Guide
- (1) Mounting Template
- (3) Mounting Hardware
- (1) Allen Wrench
- (2) Phoenix Connectors



[elancontrolsystems.com](http://elancontrolsystems.com)

SPECIFICATIONS	
Power Consumption	DC12V, 4.7W / PoE, 5.8W (IEEE 802.3af)
Dimensions	4.3" x 3.5"
Weight	18.3 Oz.
Operating Temperature	-40°F – +122°F (-40°C – +50°C)
Angle of View	<b>EL-IP-ODF2:</b> 90°(H), 45°(V), 107°(D) <b>EL-IP-ODF4:</b> 84°(H), 44°(V), 100°(D)
IR Range	30m
Alarm Event Triggers	Motion/Tamper/Network lost detection
Alarm Event Actions	FTP, SMTP, HTTP post, SD card, SAMBA
SD Card Recording	Support Micro SD/SDHC/SDXC (up to 128GB) card for circular recording (card is not included)
CPU Memory	Embedded SoC ARM Cortex-A9, 600MHz, 256MB DDR3, 256MB flash memory
Intelligent Video Surveillance	Advanced motion detection, Tripwire detection, Semaphore + Tripwire detection, Object counting
Certifications	CE: Class B, FCC: Class B, IP66 Weather Resistant

VIDEO	
Video compression	Smart H.264/ H.264 High/Main Profile, Motion JPEG
Maximum Frame Rate	H.264 and MJPEG: 30 FPS@1920 x 1080, 20 FPS@2688 x 1520
Day/Night (IR-cut filter)	Color (Day), Monochrome (Night), Auto, Schedule
Scanning system	Progressive scan
Back Light Compensation	On / Off
2D WDR	Off / Auto / x2 / x3 / x4
High Dynamic Range (HDR)	Up to 100dB
3D Noise Reduction	Off / 1 to 32 selectable
Privacy Masking	Off / On (4 independent areas)
Sense Up	Off / 1 frame / 2 frames
Sense Up+	Yes
Auto Gain Control	42 dB variable gain
Other Functions	Sharpness, Hue, Image flip, Image mirror
Lens Distortion Correction (LDC)	Yes

NETWORK	
Ethernet	10Base-T / 100Base-TX, RJ-45
On-Screen Display (OSD)	Text over date, time, and camera name
Protocols	IPv4, IPv6, TCP, UDP, HTTP, HTTPS, SMTP, MQTT, QoS, SNMP, SNMP Trap, NTP, DDNS, UPnP, FTP, ARP, DHCP, PPPoE, DNS, RTSP, RTCP, Telnet, ICMP, IGMP, SDDP, Bonjour
Multi IP Addresses	Yes