

ELAN[®]



EL-IP-OBV2-WH / EL-IP-OBV4-WH / EL-IP-OBV2-BK
EL-IP-OBF2-WH / EL-IP-OBF4-WH
EL-IP-OBA4-WH / EL-IP-OBA4-BK

Quick Start Guide

AUTO
DISCOVER
CONFIGURE

OUTDOOR/
INDOOR



FIXED

**AUTO
FOCUS**

VARIFOCAL

2MP

4MP

WH

BK



ELAN SURVEILLANCE

BEGINNING USING THIS CAMERA

IMPORTANT!!

If you are installing ELAN Cameras and/or ELAN NVR with an ELAN Controller, please refer to the “ELAN Surveillance” Integration Notes for setup and software configuration. ELAN Integration Notes are served through the ELAN tools and on elanhomesystems.com/dealer-resources. The software configuration information in this document can be used to extend device control parameters for use within an ELAN controller environment, or be used to operate this hardware independent of an ELAN controller.

NOTES

NOTE

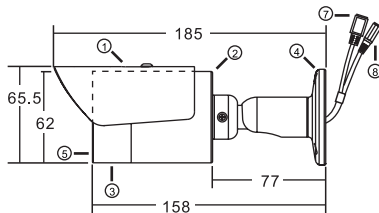
This equipment has been tested and found to comply with the limits for a Class B digital device, pursuant to part 15 of the FCC Rules. These limits are designed to provide reasonable protection against harmful interference in a residential installation. This equipment generates, uses and can radiate radio frequency energy and, if not installed and used in accordance with the instructions, may cause harmful interference to radio communications. However, there is no guarantee that interference will not occur in a particular installation. If this equipment does cause harmful interference to radio or television reception, which can be determined by turning the equipment off and on, the user is encouraged to try to correct the interference by one or more of the following measures:

- Reorient or relocate the receiving antenna.
- Increase the separation between the equipment and receiver.
- Connect the equipment into an outlet on a circuit different from that to which the receiver is connected.
- Consult the dealer or an experienced radio/TV technician for help.

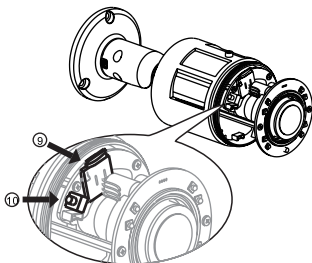
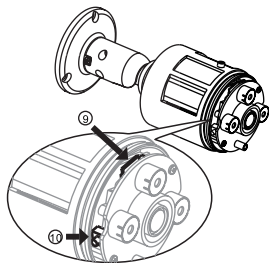
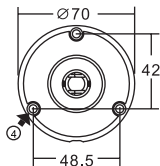
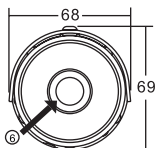
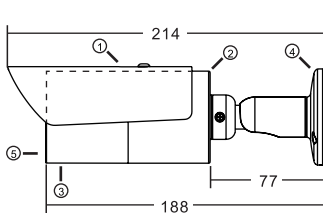
Changes or modifications not expressly approved by the party responsible for compliance could void the user's authority to operate the equipment.

Units: mm

[Fixed Lens Camera]



[VariFocal and AutoFocus Camera]

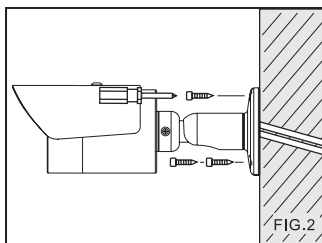
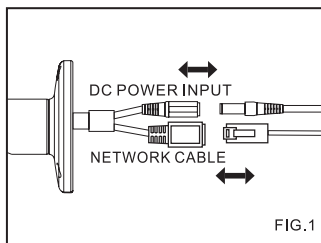


PART DESCRIPTION & DIMENSIONS

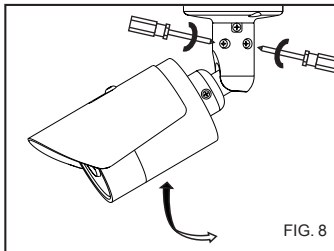
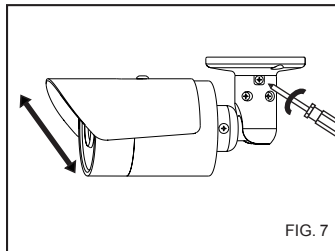
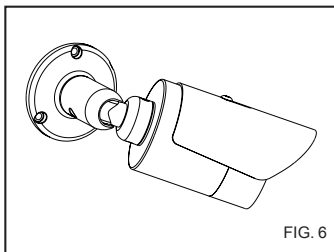
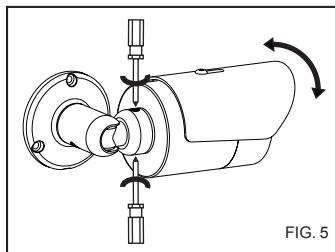
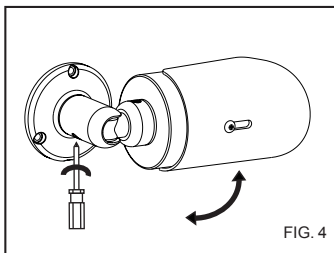
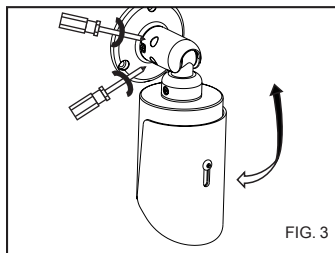
- ① Sun Shield
- ② Main Body
- ③ Front Cover
- ④ Bracket Base
- ⑤ Window
- ⑥ Lens
- ⑦ RJ-45 Network Port (supports PoE)
- ⑧ Power jack (DC12V \pm 10%)
- ⑨ MicroSD card slot
- ⑩ Reset Button

INSTALLATION

1. Remove the camera from the box. Connect the Ethernet cable and power cable to the camera's RJ-45 network connector and DC power-in connector (FIG.1). Secure the bracket to the wall (FIG.2).

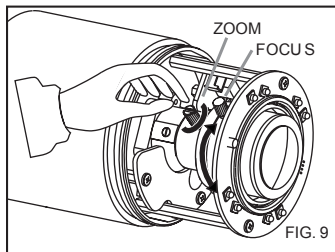


2. Loosen the five adjustment screws to orient the camera to the desired angle, and then tighten the adjustment screws (FIG.3–8).



3. Rotate focus and zoom knobs for optimal video images (FIG.9).

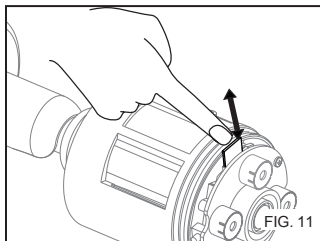
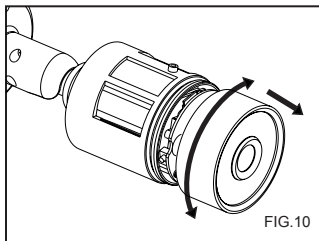
NOTE: VariFocal Model Only.



For AutoFocus models, use the ELAN software or the camera web GUI.

INSERTING A MICRO SD CARD

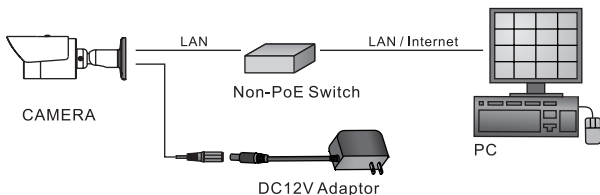
Rotate the front cover counterclockwise to remove it and insert a MicroSD card (FIG.10 & FIG.11).



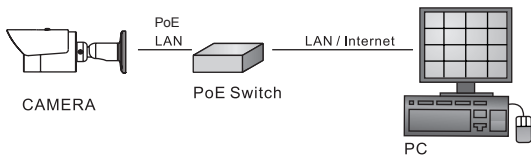
SYSTEM CONNECTIONS

For connecting EL-IP-OB Camera series to the network, please follow one of the system architectures:

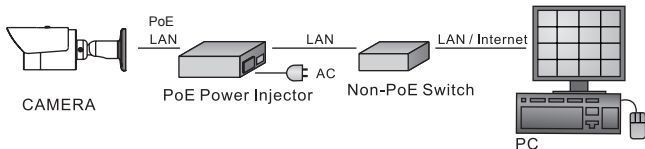
(1). Use DC12V power adapter and the network switch connected to the network.



(2). Use with PoE from the network switch connected to the network.

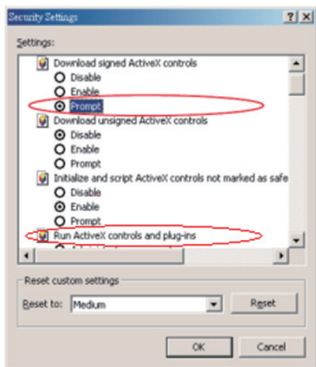


(3). Use PoE power injector and the network switch connected to the network.



INTERNET BROWSER SETTINGS & APPLICATION REQUIRED

Make sure your Internet browser allows the signed ActiveX plug-in to work on your computer. To do this, open Internet Explorer and go to Tools-> Options-> Security Settings. Set "Download Signed ActiveX plug-in controls" to "Prompt" and "Run ActiveX control and plug-in" to "Enable".

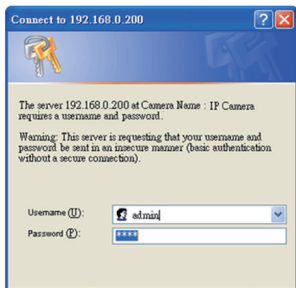


Once complete, you can access the IP camera's live video by entering the default IP address via your Internet browser. When the security warning dialog box appears, click OK to download the ActiveX plug-in directly from the IP camera.

There are two levels of user authentication (admin and guest) that can access the IP camera. Administrator is authorized to reset basic mode settings and see live video, while the guest is only allowed to see live video.

The default usernames and passwords are as follows:

Username	ELAN
Password	3526



To log on to the IP camera, please enter the username and password on the login page and click Submit to enter the system.

CONFIGURING IP CAMERAS

If using in ELAN automation system, please refer to the integration note at the beginning, and use the ELAN configurator for Auto-Discover/Auto-Configure features. If installing camera with no ELAN system, follow the browser connections below.

Before accessing the IP camera, make sure that the camera's RJ-45 network, audio, and power cables are properly connected. To set the IP address, consult your network administrator for an available IP address. The default IP address for each IP camera is 192.168.0.200. Users can use the default IP address to verify the camera's network connection.

BROWSER CONNECTION REQUIREMENTS

Universal ActiveX software components are required for online display of MJPEG or H.264 Full HD video. When you log in to the IP camera from Internet Explorer, a security warning dialog box will prompt the installation of the Universal ActiveX plug-in. Click Install to download it.



EMERGENCY FACTORY DEFAULT

To restore the hardware to factory default settings, please follow these steps:

1. Press and hold RESET for 10 seconds before releasing.
2. The camera will be restored to factory default settings after approximately 90 seconds and will reboot automatically.
3. Search for the IP device.
4. Start the IP device via an Internet browser.
5. Enter the default username "ELAN" and password "3526" to operate.

NOTE: Cameras are configured to use DHCP by default but will revert to the default address 192.168.0.200 if a DHCP server is not available.



ELAN[®]

Your world, made simple.™

main:

1 (800) 472-5555 – US

1 (707) 283-5900 – International

1 (707) 283-5901 – Fax

tech support:

techsupport@elanhomesystems.com

web:

elanhomesystems.com