

geratech[®]



EGE-HDMVSW-161

6x1 HDMI Multiviewer

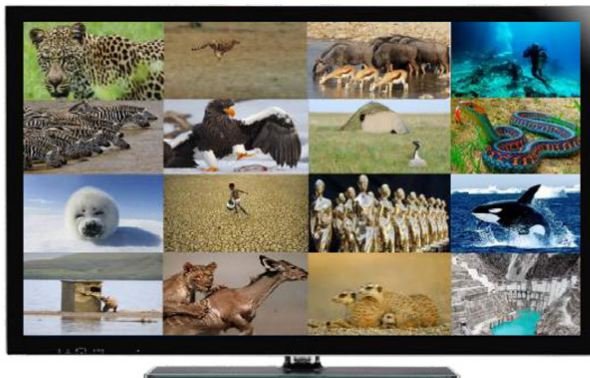




Geratech EGE-HDMVSW-161
16x1 HDMI Multiviewer, IR and RS-232 Control.

16-inputs and 1-output multi-viewer switcher

- Two operation modes including single display with seamless switching and sixteen multiviewer
- Supports High Definition resolutions up to 1080P@60Hz
- Output resolution supports 1080p,720p,1080i,1024x768,1360x768
- Selectable audio from any one of four HDMI sources
- Supports CEC bypass function
- Supports IR extension
- Flexible control through on-panel buttons, IR remote control or RS-232



Multi-view Display



Single Display

Technical	
HDMI Compliance	HDMI 1.3
HDCP Compliance	HDCP 1.3
Video Bandwidth	6.75 Gbps
Video Resolutions	up to 1080P@60Hz
Color Space	RGB, YCbCr 4:4:4, YCbCr 4:2:2
Color Depth	10-bit, 12-bit
Audio Formats	PCM 2CH, LPCM 5.1, LPCM 7.1, Dolby Digital, DTS 5.1, Dolby Digital+
ESD Protection	Human body model — ±8kV (air-gap discharge) & ±4kV (contact discharge)
Connections	
Inputs	16x HDMI Type A [19-pin female] 1x 9-pin D-sub [RS-232] 1x 3.5mm Stereo Mini-jack [Infrared Receiver]
Outputs	1x HDMI Type A [19-pin female]
Mechanical	
Housing	Metal enclosure
Dimensions	440mm [W] x 200mm [D] x 45mm [H]
Net Weight	1.8kg
Power Supply	Input: AC100 - 240V 50/60Hz Output: DC 12V/5A (US/EU standards, CE/FCC/UL certified)
Power Consumption (Max)	35W
Operation Temperature	32 - 104°F / 0 - 40°C
Storage Temperature	-4 - 140°F / -20 - 60°C
Relative Humidity	20 - 90% RH (no condensation)



www.egerate.com

www.geratech.eu