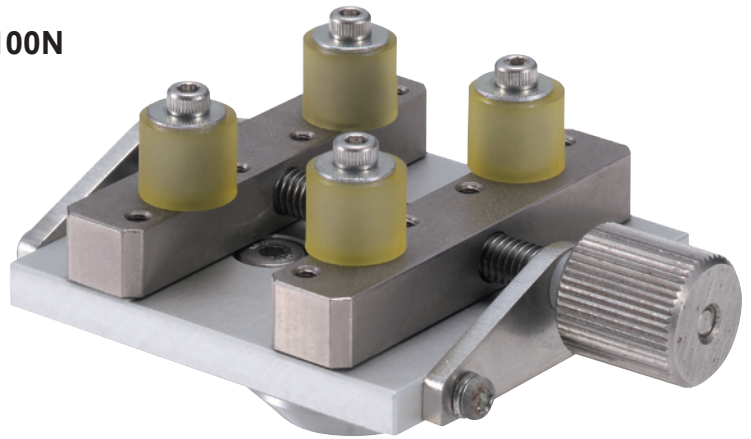


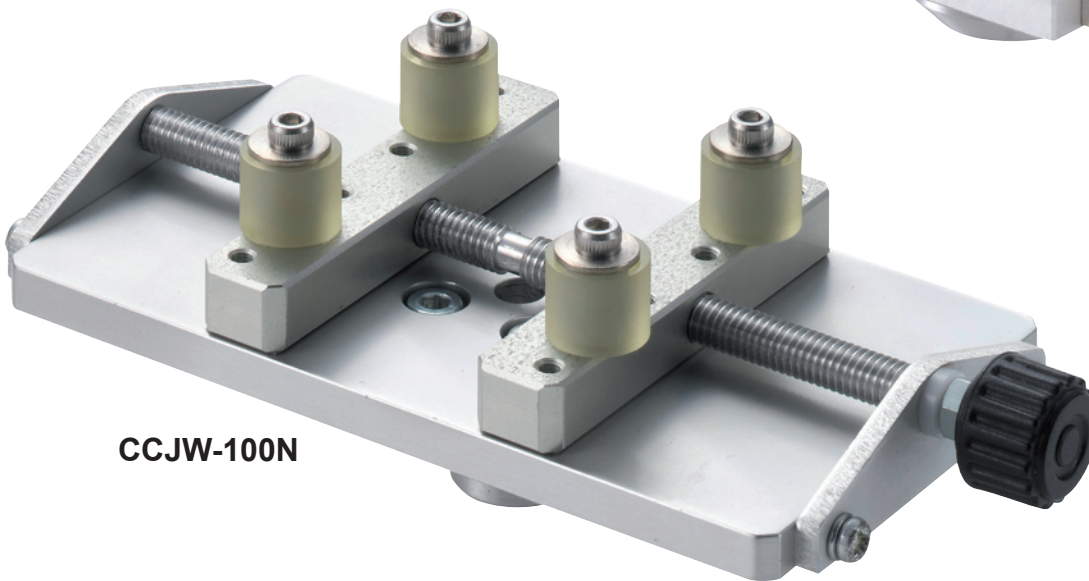
Cap Clamping Jig CCJ-100N and CCJW-100N

Suitable for gripping round-shaped samples

CCJ-100N



CCJW-100N



Features

- Ideal for insertion and extraction tests of connectors and caps of e. g. cosmetic packages
- The jigs are available with different pins

Applications

- The jig can be mounted at the M6 measuring shaft of a force gauge and on the table of a test stand



Note

- Particular materials and shape can not be used. The jig is not suitable for soft or easy to deform material
- All information is subject to change without prior notice.

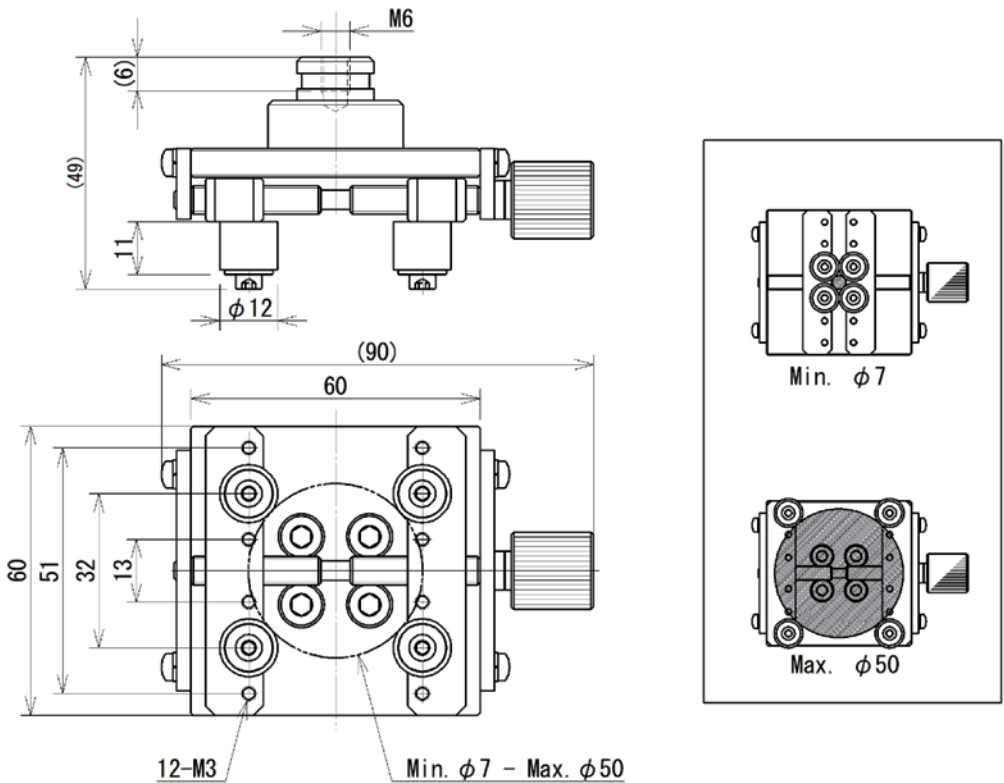
Specifications

Model	CCJ-100N	CCJ-100N-01	CCJ-100N-02	CCJW-100N	CCJW-100N-01	CCJW-100N-02
Pins Length	10 mm	10 mm	30 mm	10 mm	10 mm	30 mm
Material	Urethane	stainless steel	Urethane	Urethane	stainless steel	Urethane
clamping width	sample diameter 7 - 50 mm			sample diameter 10 - 100 mm		
Capacity	100 N					
Weight	250 g	300 g	260 g	330 g	380 g	340 g
Mounting	M6 thread					

The weight of the attachment is also applied as load on the force gauge and had to be considered when selecting the capacity.

Dimensional drawing

CCJ-100N



CCJW-100N

