

## Conversion Adapter CA Series



**CA-F10T6**

### Features

Allows accessories with different threads to be attached to force gauges and the load cells of series DPU and SW.

### Note

- Specifications subject to change without notice.

**Specifications**

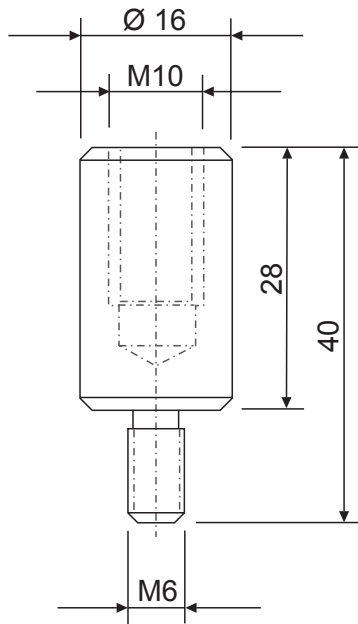
Force Gauge				
Model	Size	Capacity	Description	Weight
CA-F6T10	M6 female/ M10 male	1000 N	For mounting M10 accessories on a M6 measuring shaft	approx. 40 g
CA-F10T6	M10 female/ M6 male	1000 N	For mounting M6 accessories on a M10 measuring shaft	approx. 35 g

Load Cell SW1 and SW3				
Model	Size	Capacity	Description	Weight
CA-6T6	2 x M6 male	1000 N	For mounting M6 accessories on the female thread of the load cell SW1	approx. 15 g
CA-10T10	2 x M10 male	5000 N	For mounting M10 accessories on the female thread of the load cell SW1	approx. 25 g
CA-16T16	2 x M16 male	20 kN	For mounting customized M16 accessories on the female thread of the load cell SW3	approx. 95 g

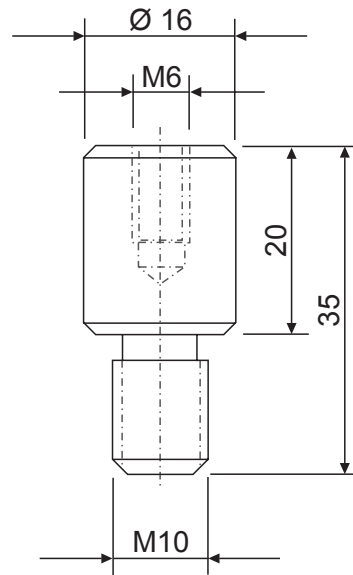
Load Cell DPU				
Model	Size	Capacity	Description	Weight
CA-6T6	2 x M6 male	1000 N	For mounting M6 accessories on the female thread of the load cell DPU	approx. 15 g
CA-12T10	M10 male/M12 male	5000 N	For mounting M10 accessories on the female thread of the load cell DPU	approx. 65 g
CA-18T18	2 x M18 male	20 kN	For mounting customized M18 accessories on the female thread of the load cell DPU	approx. 145 g

Weight of the attachment and adapter are also applied as load on the force gauge or load cell. Consider it when selecting the capacity.

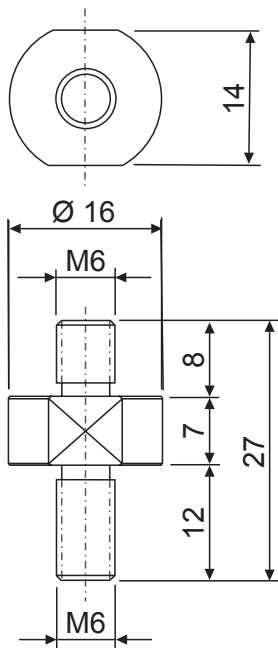
CA-F10T6



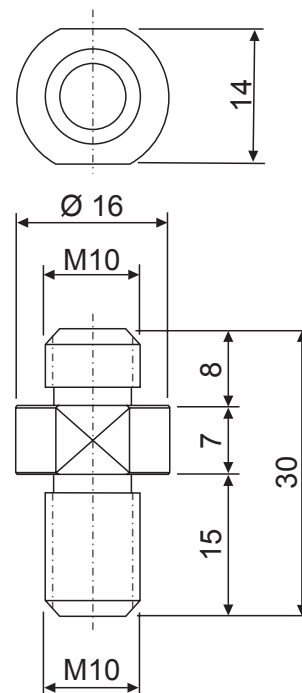
CA-F6T10

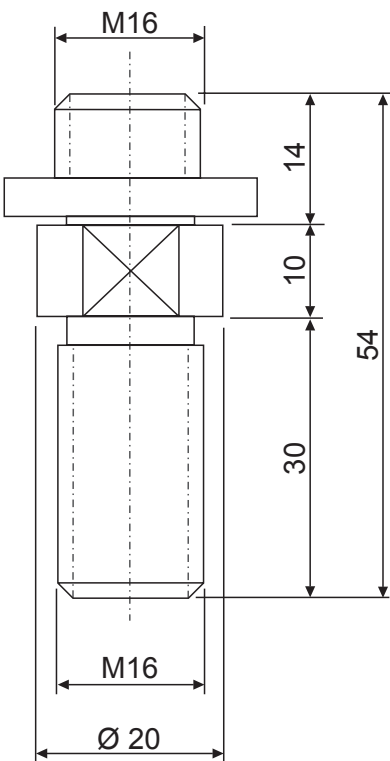
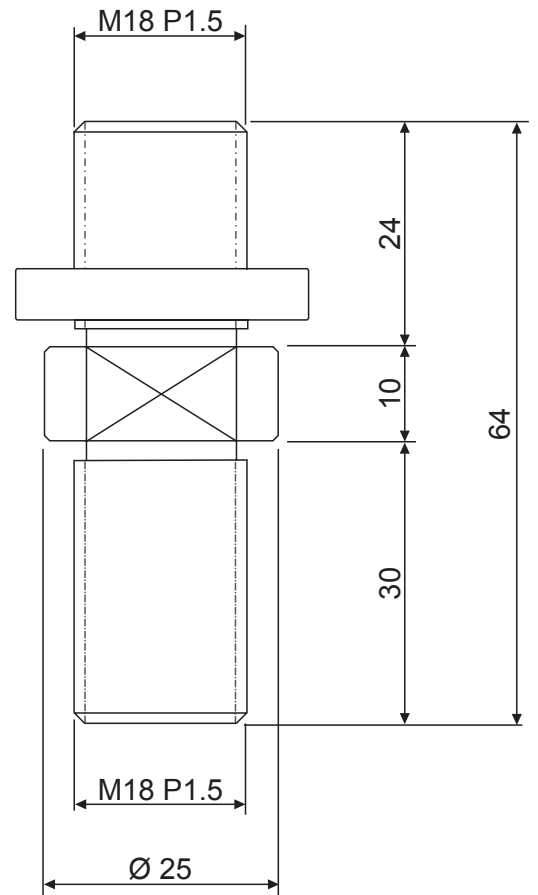
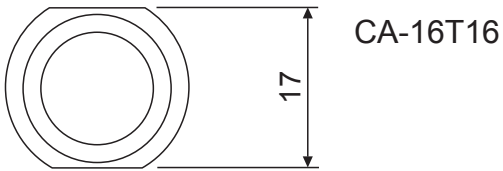
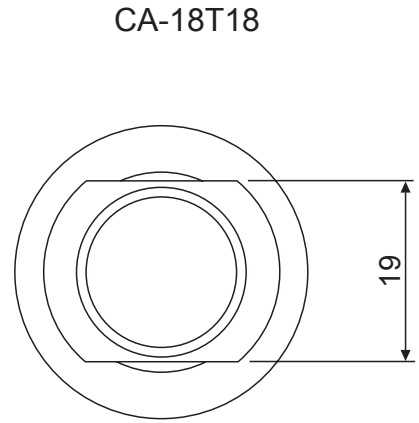
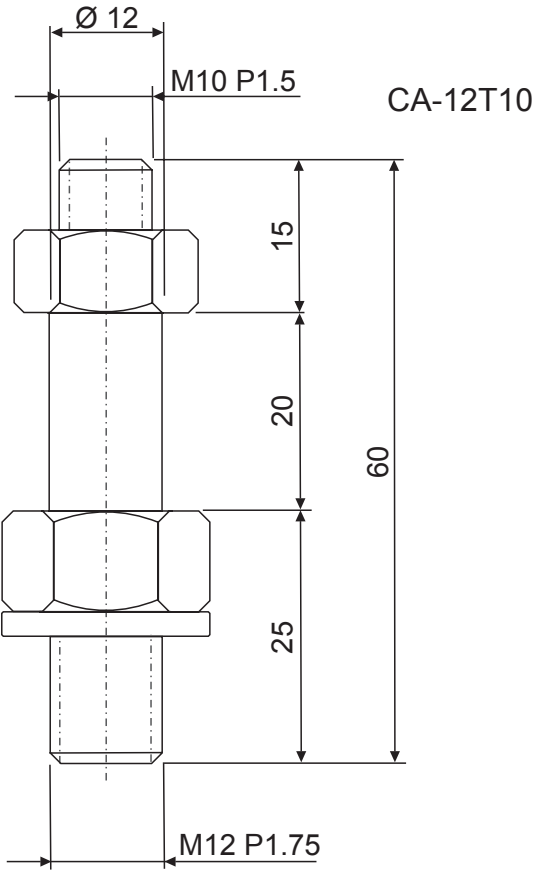


CA-6T6



CA-10T10





Unit: mm