

## Pin and Hook Series SJ

For pull and shear tests on soldered electronic components



SJ-QFP-01



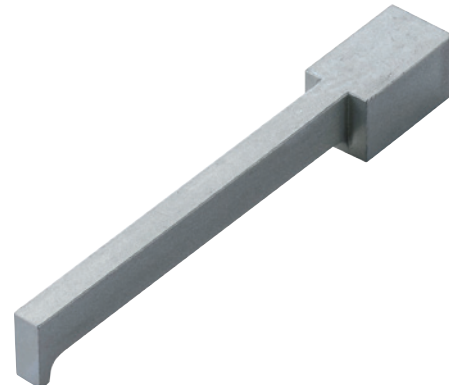
SJ-TIP-01



SJ-TIP-02



SJ-TIP-03



SJ-TIP-04

### Feature

- Useable for pull and shear tests.
- Useable for measurements according to IEC and JIS standards.

## Applications

SJ-QFP-01	<b>IEC 62137-1-1:2007 (JIS C 62137-1-1:2010)</b> Surface mounting technology - Environmental and endurance test methods for surface mount solder joint - Part 1-1: Pull strength test <b>JIS Z 3198-6:2003</b> Test methods for lead-free solders Part 6: Methods for 45° pull test of solder joints on QFP lead
SJ-TIP-01	<b>JIS C 60068-2-21:2009</b> Environmental testing-Part 2-21: Tests-Test U: Robustness of terminations and integral mounting devices
SJ-TIP-02	<b>JIS Z 3198-7: 2003</b> Test method for lead-free solders-Part 7: Method for shear strength of solder joints on chip components
SJ-TIP-03 SJ-TIP-04	<b>IEC 62137-1-2:2007 (JIS C 62137-1-2:2010)</b> Surface mounting technology - Environmental and endurance test methods for surface mount solder joint - Part 1-2: Shear strength test



### Note

- Combining with a test stand, more stable measuring becomes possible.
- All information is subject to change without prior notice.

**Specifications**

Model	SJ-QFP-01	SJ-TIP-01	SJ-TIP-02	SJ-TIP-03	SJ-TIP-04
Application	45 degree pull tests	90 degree shear tests Pin 0.25 mm	90 degree shear tests Pin 0.5 mm	90 degree shear tests Pin 2 mm	90 degree shear tests Pin 4 mm
Capacity	100 N				
Mounting screw	M6				
Weight	Approx. 60 g	Approx. 50 g	Approx. 50 g	Approx. 15 g	Approx. 25 g

**Dimensional drawing**

