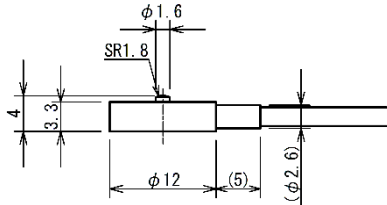


# Load Cell Model LM / eLM

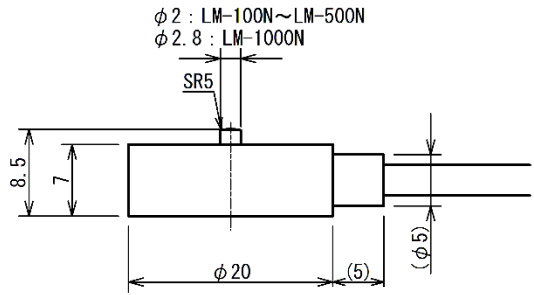
**[Dimensions]**

• **LM series**

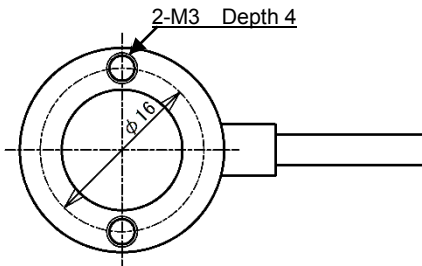
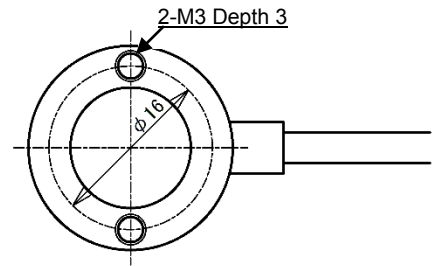
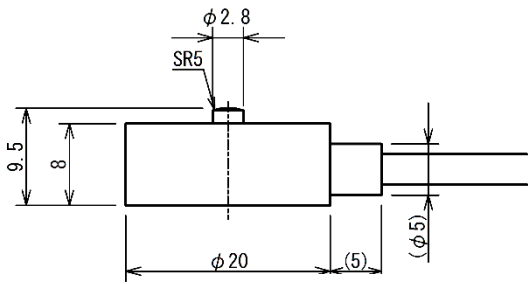
LM-10N~50N



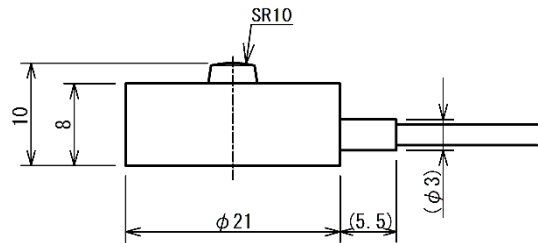
LM-100N~1000N



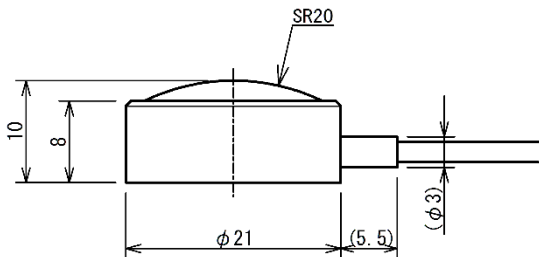
LM-2000N



LM-5000N



LM-10kN,20kN



The value in ( ) is only advisory.  
It could be larger depending on quantity for application of glue or due to protective tube for cable.

### Amplifier ZTS/ZTA

Model	Measuring Range	Dimensions Ø x H	Accuracy
LM-10N	10 N	12 x 4 mm	±2.0 % Full Scale
LM-20N	20 N		
LM-50N	50 N		
LM-100N	100 N	20 x 8.5 mm	
LM-200N	200 N		
LM-500N	500 N		
LM-1000N	1000 N	20 x 9.5 mm	
LM-2000N	2000 N		
LM-5000N	5000 N		
LM-10kN	10 kN	21 x 10 mm	
LM-20kN	20 kN		

### Amplifier eZT

Model	Measuring Range	Dimensions Ø x H	Accuracy
eLM-10N	10 N	12 x 4 mm	±2.2 % Full Scale
eLM-20N	20 N		
eLM-50N	50 N		
eLM-100N	100 N	20 x 8.5 mm	
eLM-200N	200 N		
eLM-500N	500 N		
eLM-1000N	1000 N	20 x 9.5 mm	
eLM-2000N	2000 N		
eLM-5000N	5000 N		
eLM-10kN	10 kN	21 x 10 mm	
eLM-20kN	20 kN		