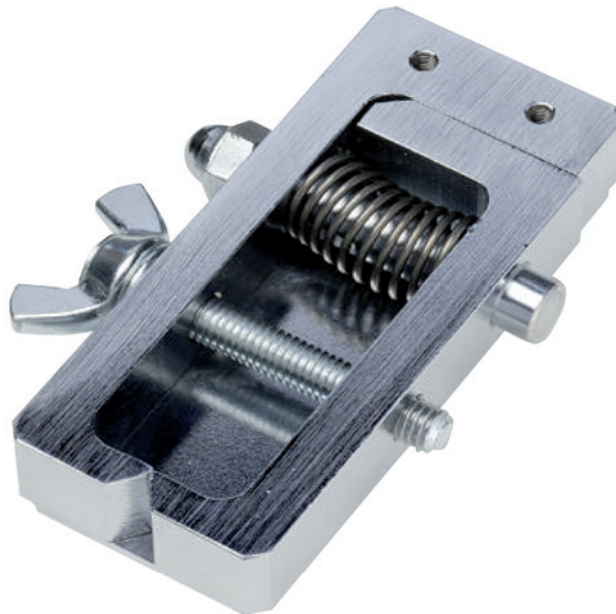


## Wire terminal grip CH-500N

Suitable for wire terminal clamp

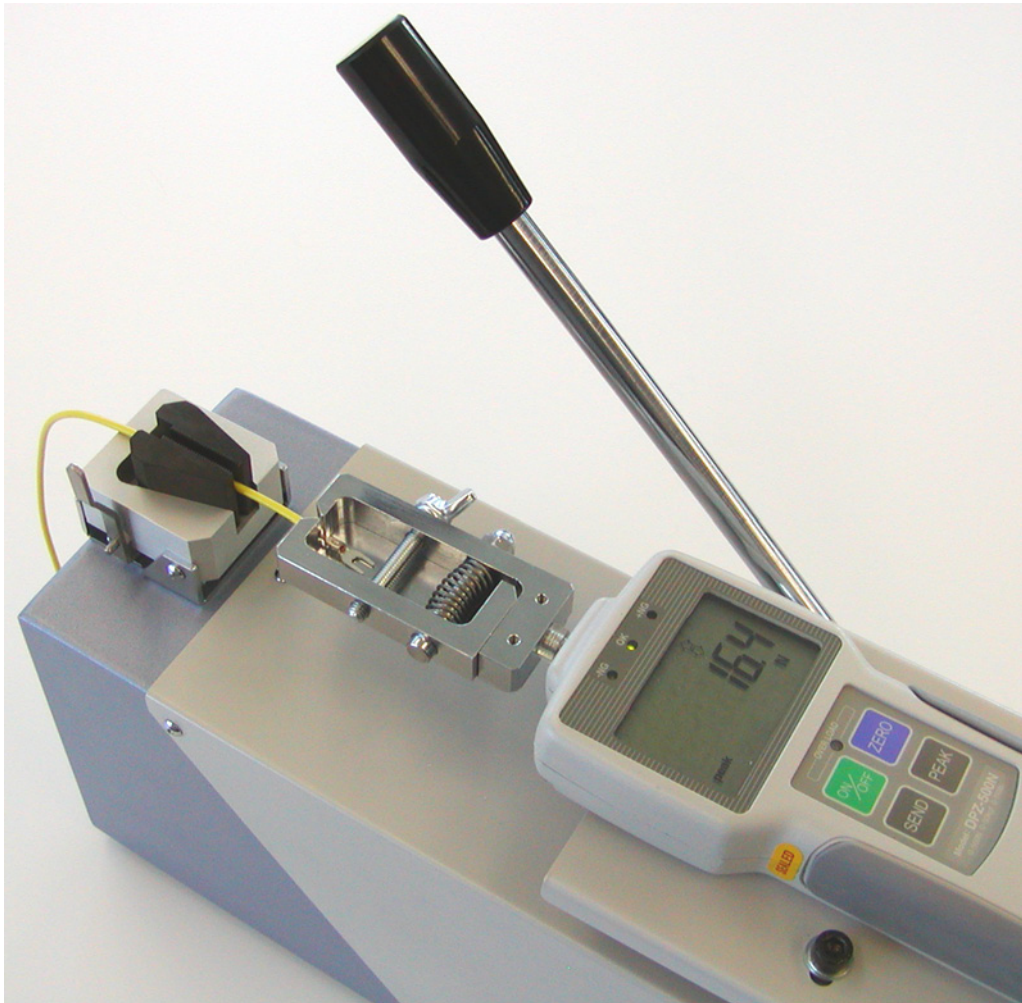


### Features

- Easy operation by hitching wire harness terminal.
- It is possible to hold up to 6 mm diameter cable.

### Applications

- The cam grips are installed on the force gauge for tension test of various test pieces.



### Note

- Particular materials and shape can not be used.
- When you clamp wire for opposite direction, we recommend our CW-500N.
- All information is subject to change without prior notice.

**Specifications**

Model	CH-500N
Capacity	500 N (50 kgf)
Opening width	6 mm
Weight	approx. 210 g

**Dimensional drawing**

