

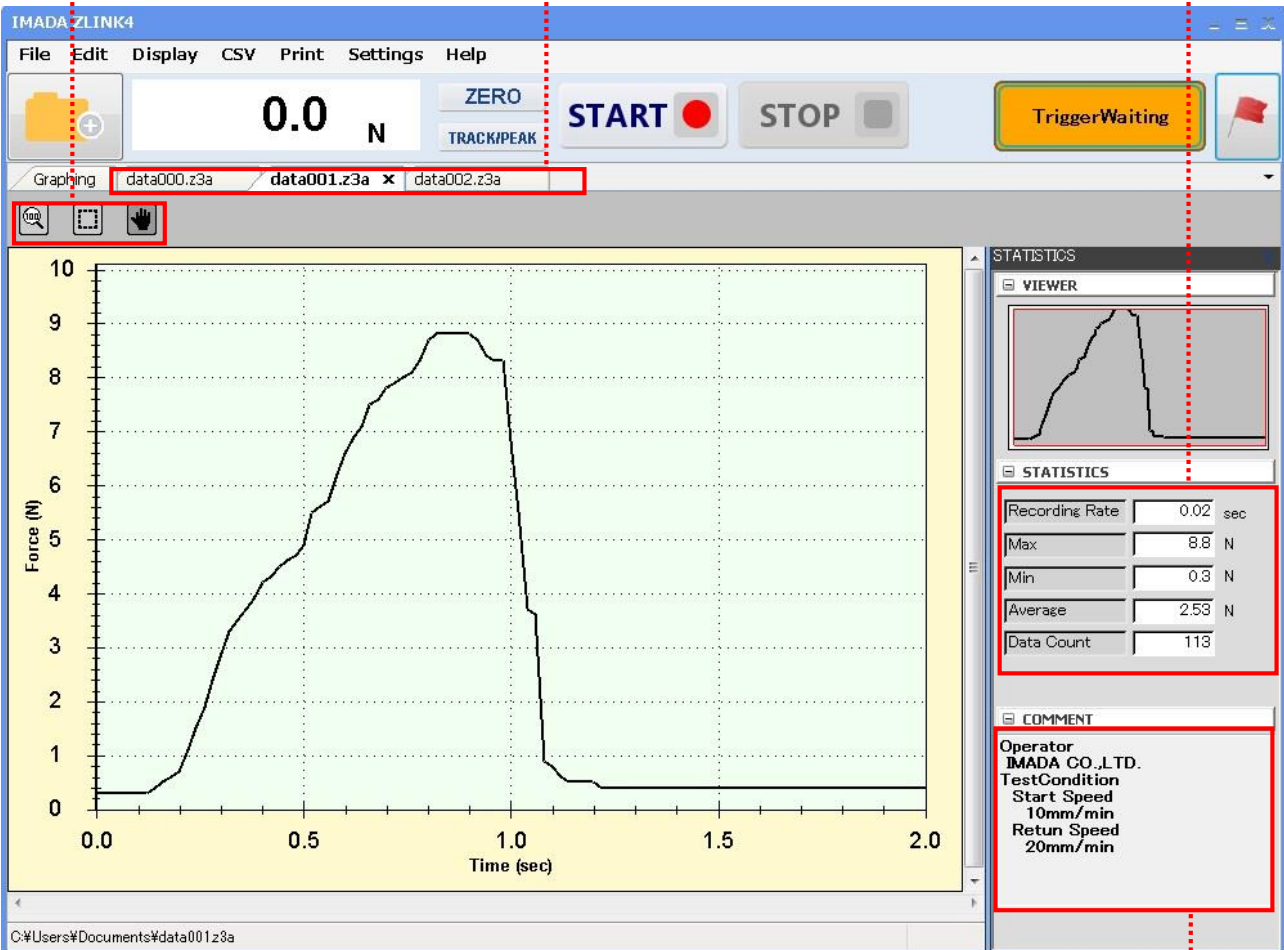
Force-Time Graphing Software ZLINK4

You can see force transition graphically with simple operation.
It starts or ends graphing automatically with a trigger function.
It automatically saves a recorded graph when graphing is finished.

Graph zooming function
You can easily zoom specific area by simply dragging.

Plural tabs
You can open and compare graphs easily using plural tabs.

Statistical calculation
Max, Min, and Ave. values are calculated automatically.



* Display image

Comment function
You can save comments to store measurement conditions such as measurement speed and attachments used for

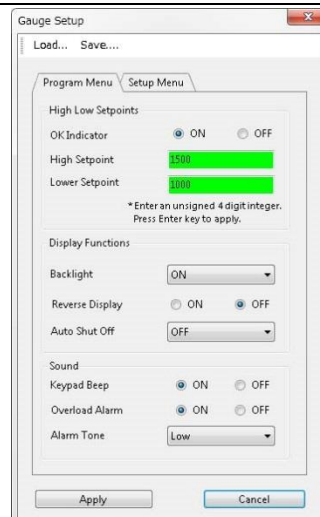
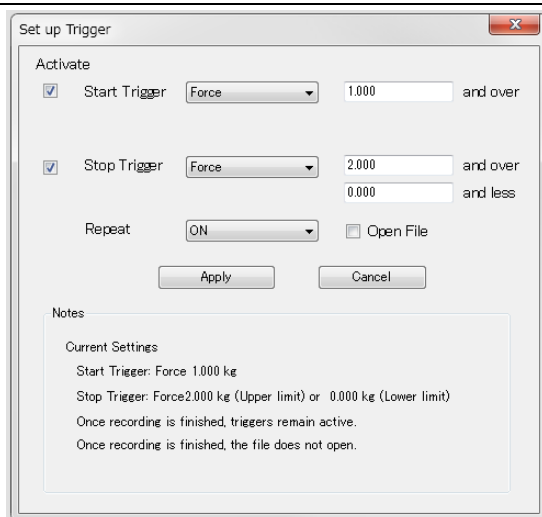
Features

Trigger function

You can input force values to start and stop graphing to enable auto recording. You can also set graphing time period.

Force gauge setting

Combining the software with a DSV or DST force gauge, you can set up functions such as set points (upper/lower limit), and more.



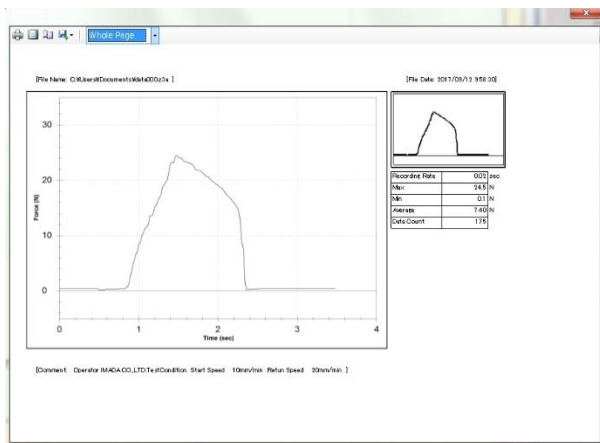
Specifications

Model	ZLINK4
Sampling rate	Max. 50 data / sec (50Hz)
Resolution	Force resolution is determined by a force gauge's capacity. (Signed 4-digit) (e.g.) Your force gauge's capacity is 5N→0.001N
Functions	Trigger function, Statistics calculation, CSV format conversion, Printing, Displaying data recorded in ZLINK3 Comment function, Force gauge setup
Output	Word, Excel, PDF format
Languages	Japanese, English

Operating environment	
OS	Windows 7 / 8 / 8.1 / 10
Hardware	CPU : Pentium4(1GHz or more) or more is recommended. Memory : 2GB or more is recommended. Hard disk (Data storage area) : 10GB or more is recommended
Platform	Microsoft .NET Framework 4.6 or later
Execute environment	Microsoft Internet Explorer 6.0 or later Windows installer 3.1 or later
Image size	Resolution 1024×768 pixel or more
Connecting port	USB1.1, USB2.0 connector (force gauges equipped with USB connector) , RS232※

※ When you use RS232, make sure to use a PC equipped with RS232 port. (You may use a commercial adaptor to convert RS232 into USB, however, you could not connect well in some cases.)

[Printing sample]



[Output]

◎Printing

Select paper size (A4 or letter size), then you can print it.

◎Digital output

You can output data in Word/Excel/PDF format.
Graph is attached as an image file.

[Notes]

- The contents may be changed without a prior notice for improvement or other reasons in the future.
- Do not use or copy a part or all of the software and this specifications without permission.

[Notes for purchase]

- You need a specific digital force gauge and connection cable to use this software.
- This product is protected by Japanese Copyright Act and Universal Copyright Convention. Do not copy and use this content without authority.
- We do not accept any returns. Please make sure to check its working condition, operating environment and so on.