



“HAND ME
THE MOUNTZ!”

**Mountz e-DRIV[®] ECT-Series Transducerized Smart Electric Screwdrivers and
Mountz e-DRIV[®] EC-Series Smart Electric Screwdrivers**

SAFEGUARDING AGAINST FASTENING FAILURES

- Error-proof the fastening process
- Programmable fastening sequences and workflows
- Data collection—record and store torque and fastening data
- Single automation fastening system replaces up to 15 power tools
- Achieve multiple fastening tasks with one tooling system
- Digital I/O allows interfacing with a machine & PLC interface for line control
- Transducerized Tool—traceability, superior accuracy and precision
- Free product software—no annual licensing required—savings of \$2K
- Clean room compliant (ISO14644-1 2015 Class 5)



ACCELERATE SMART MANUFACTURING

Relied on by leaders in aviation, automotive, transportation, medical and electronic-all industries in which error-proofing process control is critical.



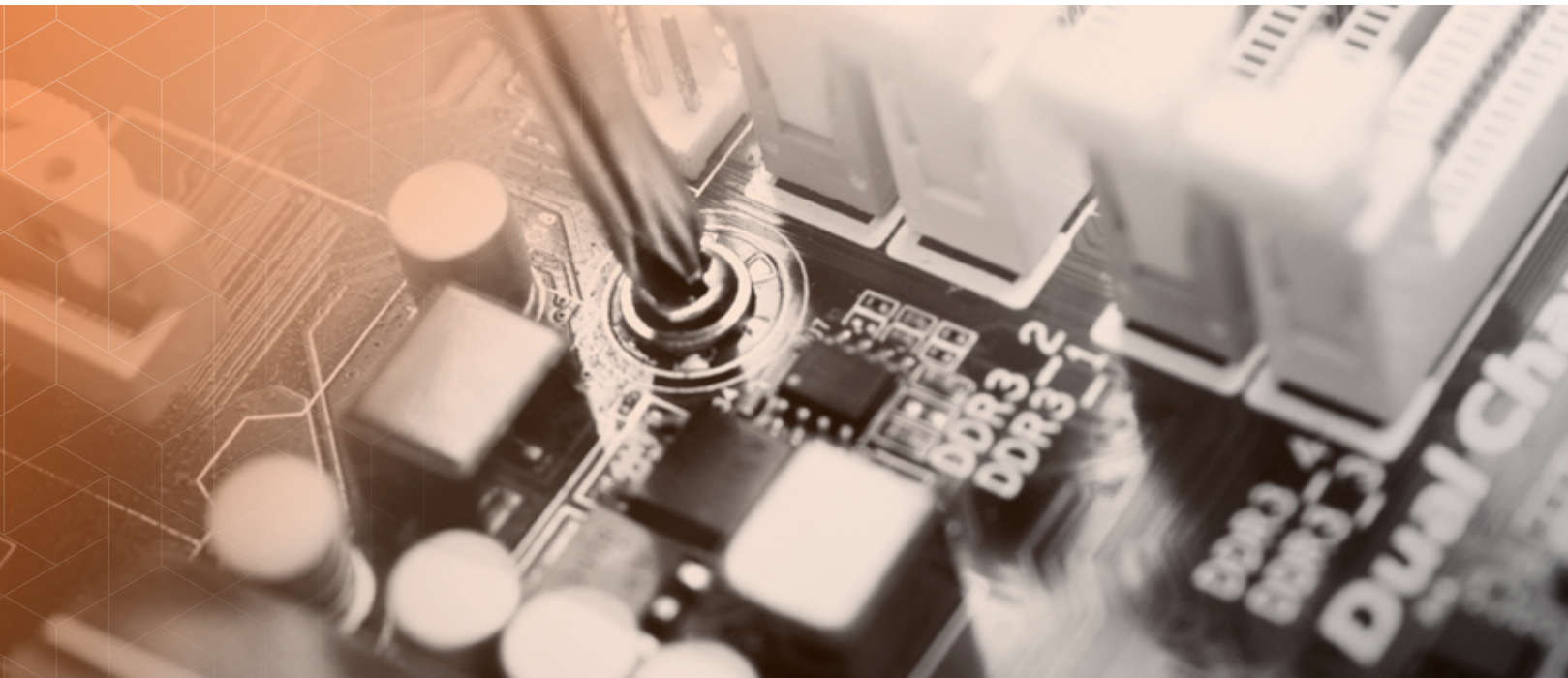
The all-in-one transducerized smart electric screwdriver system that delivers productivity and quality advantages in complex manufacturing environments

Mountz's all-in-one transducerized smart electric screwdriver solution safeguards against fastening failures for quality-minded engineers with critical industrial manufacturing applications requiring documented precision and accuracy torque control. The EC and ECT-Series are available only through Mountz Torque, a durable torque and automation control system engineered for precise, accurate and repeatable torque control. The high-performance torque fastening system allows manufacturers to optimize the assembly area, reduce labor costs and increase productivity.

The screwdriver system can implement multiple fastening strategies for sensitive and difficult assembly joints. The system increases productivity as one tool can be programmed to do the job of numerous conventional tools, saving time, maintenance cost, space, and training.

Error-proofing manufacturing increases assurance in critical assembly operations

The error-proofing system eliminates manufacturing risks and prevents product defects. Easily program the controllers with fastening workflows and torque tolerances for each fastener in the sequence. The screwdriver system provides error-proofing capabilities that track each screw the tools fasten. Program the controller not to clear an assembly until the completion of all the fastening events. When a fastening error occurs, the torque control system will detect it, flag it, and prevent the product from moving further down the line. The Industry 4.0 error-proofing tool has I/O interfaces that enable manufacturing integration for line control monitoring techniques. The IoT connected automation tool improves production and quality by collecting and storing data and providing real-time transparency in a manufacturer's assembly operations. Such real-time transparency enables quality assurance personnel to detect any fastening issues as soon as they arise.



Easier process control and compliance

The torque control system expedites all aspects of the automation process, from installing error-proofing disciplines to adaptive fastening strategies. A single Mountz DC control automation system replaces up to 15 power tools. The assembly tool reduces tooling costs and improves operations by optimizing a company's manufacturing footprint. Achieve multiple fastening tasks with one tooling system. The assembly tool gives you the flexibility you need to carry out varied and complicated manufacturing plans. The ECT-Series is a transducerized tool that features a built-in sensor that continually measures torque in real-time and feeds data back into the system. Mountz intelligent screwdriver system offers maximum production results and product oversight with a built-in screw counter and error-proofing software. And by providing documented fastening results, Mountz DC control tools also make regulatory compliance effortless.

Fastening automation workflows

When there is a repetitive series of tightening tasks, manufacturers should implement a fastening automation workflow process. Often these repetitive tasks are managed across multiple workstations, tools, and assembly operators. By creating a fastening automation workflow, the manufacturing process becomes streamlined and reduces human error risk.

Group similar processes and assign a set of standardized tasks: program fastening sequences and torque tolerances for each fastener in a sequence for sensitive and complex assembly joints. Workflow automation is the best method to achieve tightening tasks efficiently. It produces reliable and accurate torque control results every time.

Workflow automation provides visibility of the various fastening tasks and improves production efficiency, consistency, and quality. The smart screwdriver system offers benefits for improving consistency and quality.

Preset parameter settings

Each preset setting has the following programmable parameters:

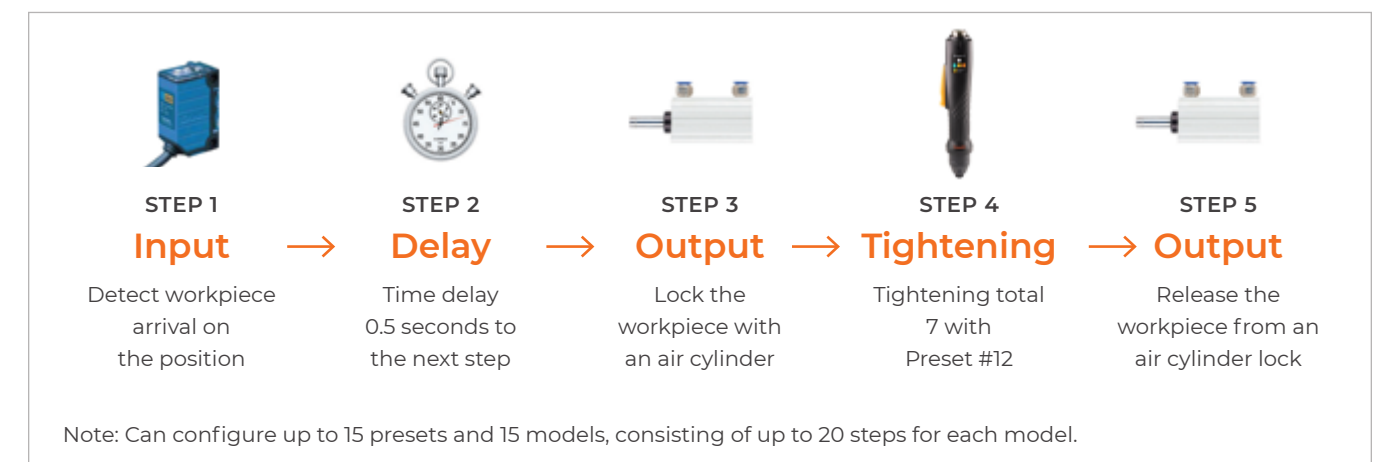
PRESET SETTINGS	PROGRAMMABLE PARAMETERS
Tightening Mode	Torque control + angle monitoring (TC/AM) Angle control + torque monitoring (AC/TM)
Torque	Target torque, min/max torque, snug torque, seating torque, torque compensation
Angle	Target angle, min/max angle, free speed angle
Speed	Target speed, Free speed, Ramp up speed
Time	Soft start time, torque rising time, torque holding time
Thread Tapping	Target torque, min/max thread torque, speed, angle start
Screw Counting	Cycle start signal, time limit, total screw count, count port signal type

Sequence control

Mountz DC control tools are easy to program and can remember up to 30 process sequences with 20 program steps. The tool gives you the flexibility you need to carry out varied and complicated manufacturing plans.



Example with sample program of sequence control





Automation and production monitoring system

Assembly automation and line monitoring control systems are critical aspects of modern assembly line production. Manufacturing products with consistent quality requires automation equipment to execute production tasks with high precision and repeatability—the foundation of process control.

Automation techniques and equipment enable manufacturers to achieve and maintain process uniformity. A flexible automation system can assemble, process, monitor, and prevent fastening errors. Instead of tinkering with human process variables, a smart screwdriver system is inherently well suited for automation process and effectively integrate with line control devices for a well-balanced production line.

Enhance efficiency with a bar code scanner

Adding a bar code scanner option to the torque control system allows the operator to instantly select and activate a programmed fastening

event on the controller. A bar code scanner can scan the bar code to trigger the correct event and capture and record the data for each run down by assigning a bar code to a fastening event. This capability is an error-proofing technique that permanently links the fastening data with the right part. Combined with built-in error-proofing software, the automation tools offer maximum production results and product oversight. And by providing documented fastening results, these precision tools also make regulatory compliance effortless.

Error-proofing the assembly process by automatically verifying the scanned part against a predefined fastening process or real-time verification will provide substantial savings in rework, repair, and even recall costs.



PRODUCT OVERVIEW

FEATURE	WHAT IS IT?	ADVANTAGE	END USER BENEFIT
Data Collection	<ul style="list-style-type: none"> Process of recording and storing the torque & fastening data 	<ul style="list-style-type: none"> Automate data collection Data centralization Uniform data Accurate real-time and historical information 	<ul style="list-style-type: none"> Ensure conformity with quality standards & regulatory compliances Accumulate fastening data efficiently into a database Capturing and analyzing data Document the assembly process
Error-Proofing	<ul style="list-style-type: none"> Mistake-proofing Implementation of fail-safe process and mechanism 	<ul style="list-style-type: none"> Ensures correct torque is applied Eliminates risk in the process Prevent fastening failures Real-time monitoring and error detections 	<ul style="list-style-type: none"> Prevent defects Reduce scrap rates Ensure high-quality standards Improve productivity & quality Safeguards against fastening failures
Screw Counting	<ul style="list-style-type: none"> Count the number of screws delivered Detect and display fastening errors 	<ul style="list-style-type: none"> Detects cross-threading, omissions, unfinished rundowns 	<ul style="list-style-type: none"> Improve production efficiency Monitor the assembly process
Process Control	<ul style="list-style-type: none"> Program assembly sequences & torque tolerances for each fastener Group similar processes and assign a set of standardized tasks 	<ul style="list-style-type: none"> Create standardize fastening workflows Optimize the tightening process Streamline assembly workflow processes 	<ul style="list-style-type: none"> Enhance process reliability & efficiency Reduce processing time Improve consistency and quality Decrease downtime
Productivity	<ul style="list-style-type: none"> Achieve multiple fastening tasks with one tooling system 	<ul style="list-style-type: none"> A single tool system replaces up to 15 tools Increase tooling efficiency Lean manufacturing 	<ul style="list-style-type: none"> Increase production rate Reduce tooling costs Minimize the number of workstations Optimize workstation cycle time DC integrates with existing process control software
I/O Interface	<ul style="list-style-type: none"> Enables integration for line control monitoring techniques 4.0 MES system ready 	<ul style="list-style-type: none"> Monitor fastening processes and tasks Industry 4.0 equipped automation tool 	<ul style="list-style-type: none"> Real-time monitoring and notifications Digital signals for communication with external devices such as PLC
Automation	<ul style="list-style-type: none"> Industrial fastening automation Intelligent process automation 	<ul style="list-style-type: none"> Replace manual processes Easy integration into a production line Reduce production costs and time 	<ul style="list-style-type: none"> Maximize production capacity Lower production lead times & bottlenecks. Flexible and agile to respond to demand shifts
Torque Data Analysis	<ul style="list-style-type: none"> Fastening torque data analysis 	<ul style="list-style-type: none"> Performance metrics & equipment effectiveness Data-driven manufacturing Standard Deviation, Mean, Average, CP, CPK analytics 	<ul style="list-style-type: none"> Tool data management Predictive tool maintenance. Improve productivity and profitability Gain visibility into fastening process data Optimize manufacturing process
Transducerized Tools	<ul style="list-style-type: none"> Tool equipped with a transducer inside 	<ul style="list-style-type: none"> Transducer is constantly measuring torque in real-time and feeding data back into the system. High degree of precision 	<ul style="list-style-type: none"> Ensures fastening precision and accuracy Enhance the detection of fastening errors A documented and traceable torque tool

ECD and ECTD controllers for EC and ECT electric screwdrivers

- Preset selection capability: Front panel or 25P I/O
- Angle Control: 0.1 - 10 turns
- 15 Preset Parameters: Torque, Speed, Soft Start & Angle
- Auto-detection of a connected electric screwdriver when the controller is powered on*
- Error display: Error code display (3 groups)
- Fastening Quality Control: OK/NG monitoring of screw fastening by preset pattern of angle and/or time
- PC based program for parameter settings, monitoring and real-time output
- Screw counting
- Front panel 7" Color LCD with touch screen
- 8 Input & 8 Output flexible I/O (25P D-Sub)
- Communication 1 x RS232C, 1 x Ethernet
- Protocol: Modbus, Open Protocol
- 4.0 MES system ready
- SD Card data memory slot (memory card included)

MOUNTING BRACKET (INCLUDED)

The ECD and ECTD controllers are supplied with the detachable Vesa bracket. The controller can be easily hung on the wall-mounted bracket. One part of the bracket is assembled on the back of the controller. The other part is installed on the wall.

Detachable Vesa Bracket

Item #310214



SPECIFICATIONS

Input (Electric):

AC120VC / AC230V, 50/60Hz
Output (Electric): DC38V 3.5A

Dimension (W x L x H): 7 1/2" x 8" x 10 1/4"

Weight: 8.6 lbs

110V CONTROLLERS

ECD-4000U Controller

Item #313197

For electric screwdriver models:
EC-Series (40000 models)

ECD-5000U Controller

Item #313000

For electric screwdriver models:
EC-Series (50000 models)

ECTD-5000U Controller

Item #313003

For electric screwdriver models:
all ECT-Series models

230V CONTROLLERS

ECD-4000U Controller

Item #313198

For electric screwdriver models:
EC-Series (40000 models)

ECD-5000E Controller

Item #313002

For electric screwdriver models:
EC-Series (50000 models)

ECTD-5000E Controller

Item #313004

For electric screwdriver models:
all ECT-Series models

Fastening data collection and analytics

Manufacturing processes generate a vast amount of fastening data that can provide valuable information to aid manufacturers. Data collection allows engineers to make more intelligent process decisions to minimize quality failures and maximize productivity.

The smart torque control system features data collection processes for recording and storing torque and fastening information, allowing

companies to generate a detailed production record for every product assembled. Documentation helps engineers improve assembly processes and demonstrate compliance with quality standards & regulations.

Collecting and analyzing production data gives manufacturers valuable insights into their production processes. The more you know about your production process, the better you'll be able to correct problems in real-time.

Modbus protocol communication

ECD and ECTD provide the Modbus RTU for RS232 and Modbus TCP/IP for the Ethernet port connection.

MODBUS RTU

Slave ID	F Code	Data	CRC
----------	--------	------	-----

MODBUS TCP/IP ADU

Transaction ID	Protocol ID	Length	Unit ID	F Code	Data	CRC
----------------	-------------	--------	---------	--------	------	-----

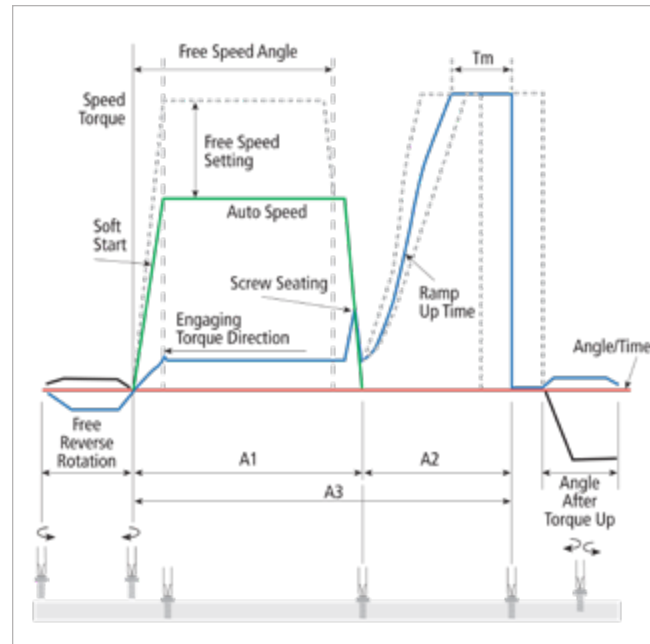


*Note: Cannot simply swap electric screwdriver models without going through a few setup steps, as all of the parameter values stored with the ECD and ECTD controller are related to the prior connected electric screwdriver model.

Software

Collect and store essential quality data in a repository for data analytics, regulatory compliance, and traceability.

- Provides easy workflow and parameter settings, data monitoring & analysis
- 2 channel real-time curve display for torque, speed, angle
- Torque capability analysis for mean value, standard deviation, CP, and CPK
- Auto data output on every event in the Modbus protocol
- Free product software and upgrade—no annual licensing required



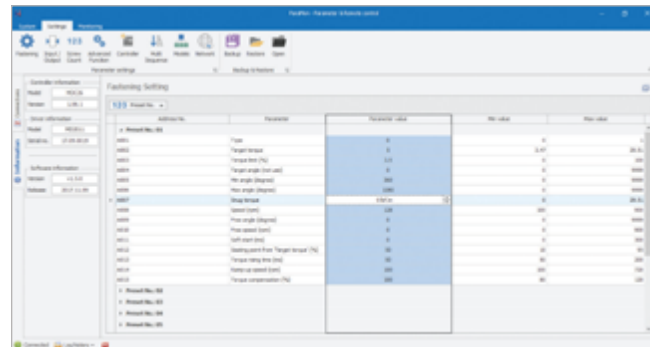
Mountz ECT-Series transducerized smart electric screwdrivers



IN-LINE TRANSDUCERIZED MODELS

MODEL	ITEM NO.	DRIVER TYPE	TORQUE RANGES		ADJUSTABLE SPEED RPM	GRIP DIAMETER	LENGTH	DRIVE SIZE	WEIGHT
			LBF.IN	N.M					
ECT40100	313189	Lever Start	2.5-12.4	0.3-1.4	100-1500	1 1/2"	10 3/4"	1/4" F/Hex	1.8 lbs
ECT40200	313190	Lever Start	6-30.1	0.7-3.4	100-900	1 1/2"	10 3/4"	1/4" F/Hex	1.8 lbs
ECT40300	313191	Lever Start	8.9-44.3	1-5	100-620	1 1/2"	10 3/4"	1/4" F/Hex	1.8 lbs
ECT50100	313034	Lever Start	7.1-35.4	0.8-4	100-1800	1 1/2"	11 1/8"	1/4" F/Hex	1.8 lbs
ECT50104	313035	Lever Start	7.1-35.4	0.8-4	100-1800	1 1/2"	11 1/4"	3/8" Sq. Dr.	1.8 lbs
ECT50150	313036	Lever Start	13.3-66.4	1.5-7.5	100-950	1 1/2"	11 1/8"	1/4" F/Hex	2 lbs
ECT50154	313037	Lever Start	13.3-66.4	1.5-7.5	100-950	1 1/2"	11 1/4"	3/8" Sq. Dr.	2 lbs
ECT50200	313038	Lever Start	15.9-79.7	1.8-9	50-690	1 1/2"	11 1/8"	1/4" F/Hex	2 lbs
ECT50204	313039	Lever Start	15.9-79.7	1.8-9	50-690	1 1/2"	11 1/4"	3/8" Sq. Dr.	2 lbs
ECT50300	313040	Lever Start	24.8-123.9	2.8-14	50-470	1 1/2"	11 1/8"	1/4" F/Hex	2 lbs
ECT50304	313041	Lever Start	24.8-123.9	2.8-14	50-470	1 1/2"	11 1/4"	3/8" Sq. Dr.	2 lbs
ECT50554	313042	Lever Start	47.8-239	5.4-27	50-260	1 1/2"	11 1/4"	3/8" Sq. Dr.	2.3 lbs
ECT50704	313043	Lever Start	62-309.8	7-35	50-180	1 1/2"	11 1/4"	3/8" Sq. Dr.	2.5 lbs
ECT50705	313044	Lever Start	62-309.8	7-35	50-180	1 1/2"	11 3/4"	1/2" Sq. Dr.	2.5 lbs
ECT50854	313045	Lever Start	88.5-442.5	10-50	50-135	1 1/2"	11 3/4"	3/8" Sq. Dr.	2.5 lbs
ECT50855	313046	Lever Start	88.5-442.5	10-50	50-135	1 1/2"	11 3/4"	1/2" Sq. Dr.	2.5 lbs

FASTENING PARAMETER SETTING



PROCESS CAPABILITY ANALYSIS



REMOTE CONTROL MONITORING



REAL-TIME GRAPH MONITORING (2 CHANNEL)



Mountz ECT-Series transducerized smart electric screwdrivers *continued*



PISTOL GRIP TRANSDUCERIZED MODELS

MODEL	ITEM NO.	DRIVER TYPE	TORQUE RANGES		ADJUSTABLE SPEED RPM	GRIP DIAMETER	LENGTH	DRIVE SIZE	WEIGHT
			LBF.IN	N.M					
ECT50100-PB ECT50100-PT	313047 313062	Pistol Grip	8-39.8	0.9-4.5	100-1800	2"	8 1/3"	1/4" F/Hex	2.2 lbs
ECT50104-PB ECT50104-PT	313048 313063	Pistol Grip	8-39.8	0.9-4.5	100-1800	2"	8 1/3"	3/8" Sq. Dr.	2.2 lbs
ECT50120-PB ECT50120-PT	313049 313064	Pistol Grip	11.5-57.5	1.3-6.5	100-1250	2"	8 1/3"	1/4" F/Hex	2.2 lbs
ECT50124-PB ECT50124-PT	313050 313065	Pistol Grip	11.5-57.5	1.3-6.5	100-1250	2"	8 1/3"	3/8" Sq. Dr.	2.2 lbs
ECT50200-PB ECT50200-PT	313051 313066	Pistol Grip	20.4-101.8	2.3-11.5	50-690	2"	9"	1/4" F/Hex	2.4 lbs
ECT50204-PB ECT50204-PT	313052 313156	Pistol Grip	20.4-101.8	2.3-11.5	50-690	2"	9"	3/8" Sq. Dr.	2.4 lbs
ECT50300-PB ECT50300-PT	313053 313067	Pistol Grip	28.3-141.6	3.2-16	50-470	2"	9"	1/4" F/Hex	2.4 lbs
ECT50304-PB ECT50304-PT	313054 313068	Pistol Grip	28.3-141.6	3.2-16	50-470	2"	9"	3/8" Sq. Dr.	2.4 lbs
ECT50500-PB ECT50500-PT	313055 313069	Pistol Grip	42.5-212.4	4.8-24	50-310	2"	9"	1/4" F/Hex	2.4 lbs
ECT50504-PB ECT50504-PT	313056 313070	Pistol Grip	42.5-212.4	4.8-24	50-310	2"	9"	3/8" Sq. Dr.	2.4 lbs
ECT50604-PB ECT50604-PT	313057 313071	Pistol Grip	58.4-292.1	6.6-33	50-200	2"	9 1/2"	3/8" Sq. Dr.	2.6 lbs
ECT50804-PB ECT50804-PT	313058 313072	Pistol Grip	70.8-354	8-40	50-160	2"	9 1/2"	3/8" Sq. Dr.	2.6 lbs
ECT50805-PB ECT50805-PT	313059 313073	Pistol Grip	70.8-354	8-40	50-160	2"	9 1/2"	1/2" Sq. Dr.	2.6 lbs
ECT50904-PB ECT50904-PT	313060 313074	Pistol Grip	100.9-504.5	10-50	50-115	2"	9 1/2"	3/8" Sq. Dr.	2.6 lbs
ECT50904-PB ECT50904-PT	313060 313074	Pistol Grip	100.9-504.5	10-50	50-115	2"	9 1/2"	3/8" Sq. Dr.	2.6 lbs
ECT50905-PB ECT50905-PT	313061 313075	Pistol Grip	100.9-504.5	10-50	50-115	2"	9 1/2"	1/2" Sq. Dr.	2.6 lbs

Note: PB models have power tool cable connection located at the bottom grip section of the tool.
PT models have power tool cable connection located at the top section of the tool.

Mountz ECT-Series transducerized smart electric screwdrivers *continued*



RIGHT ANGLE TRANSDUCERIZED MODELS

MODEL	ITEM NO.	DRIVER TYPE	TORQUE RANGES		ADJUSTABLE SPEED RPM	GRIP DIAMETER	LENGTH	DRIVE SIZE	WEIGHT
			LBF.IN	N.M					
ECT40100-RA	313193	Right Angle	2.5-12.4	0.3-1.4	100-1500	2"	13 1/2"	1/4" F/Hex	2.8 lbs
ECT40200-RA	313194	Right Angle	6-30.1	0.7-3.4	100-900	2"	13 1/2"	1/4" F/Hex	2.8 lbs
ECT40300-RA	313195	Right Angle	8.9-44.3	1-5	100-620	2"	13 1/2"	1/4" F/Hex	2.8 lbs
ECT50100-RA	313076	Right Angle	8-39.8	0.9-4.5	100-1800	2"	13 1/2"	1/4" F/Hex	2.8 lbs
ECT50104-RA	313077	Right Angle	8-39.8	0.9-4.5	100-1800	2"	13 1/2"	3/8" Sq. Dr.	2.8 lbs
EPT50120-RA	313196	Right Angle	11.5-57.5	1.3-6.5	100-1250	2"	13 1/2"	1/4" F/Hex	3 lbs
EPT50124-RA	313088	Right Angle	11.5-57.5	1.3-6.5	100-1250	2"	13 1/2"	3/8" Sq. Dr.	3 lbs
ECT50150-RA	313078	Right Angle	13.3-66.4	1.5-7.5	100-950	2"	13 1/2"	1/4" F/Hex	3 lbs
ECT50154-RA	313079	Right Angle	13.3-66.4	1.5-7.5	100-950	2"	13 1/2"	3/8" Sq. Dr.	3 lbs
ECT50200-RA	313080	Right Angle	20.4-101.8	2.3 - 11.5	50-690	2"	13 1/2"	1/4" F/Hex	3 lbs
ECT50204-RA	313081	Right Angle	20.4-101.8	2.3 - 11.5	50-690	2"	13 1/2"	3/8" Sq. Dr.	3 lbs
ECT50300-RA	313082	Right Angle	28.3-141.6	3.2-16	50-470	2"	13 1/2"	1/4" F/Hex	3 lbs
ECT50304-RA	313083	Right Angle	28.3-141.6	3.2-16	50-470	2"	13 1/2"	3/8" Sq. Dr.	3 lbs
ECT50500-RA	313086	Right Angle	42.5-212.4	4.8-24	50-310	2"	13 1/2"	1/4" F/Hex	3.3 lbs
ECT50504-RA	313179	Right Angle	42.5-212.4	4.8-24	50-310	2"	13 1/2"	3/8" Sq. Dr.	3.3 lbs
ECT50604-RA	313185	Right Angle	58.4-292.1	6.6-33	50-200	2"	13 1/2"	3/8" Sq. Dr.	3.3 lbs
ECT50804-RA	313187	Right Angle	70.8-354	8-40	50-160	2"	13 1/2"	3/8" Sq. Dr.	3.5 lbs
ECT50805-RA	313192	Right Angle	70.8-354	8-40	50-160	2"	13 1/2"	1/2" Sq. Dr.	3.5 lbs
ECT50904-RA	313181	Right Angle	100.9-504.5	11.4-57	50-115	2"	13 1/2"	3/8" Sq. Dr.	3.5 lbs
ECT50905-RA	313200	Right Angle	100.9-504.5	11.4-57	50-115	2"	13 1/2"	1/2" Sq. Dr.	3.5 lbs

Mountz ECT-Series transducerized smart electric screwdrivers continued



ROBOTIC TRANSDUCERIZED MODELS

MODEL	ITEM NO.	DRIVER TYPE	TORQUE RANGES		ADJUSTABLE SPEED RPM	GRIP DIAMETER	LENGTH	DRIVE SIZE	WEIGHT
			LBF.IN	N.M					
ECT40100-R+C	313164	Remote Start	2.5-12.4	0.3-1.4	100-1500	1 1/2"	13 1/8"	1/4" F/Hex	2.4 lbs
ECT40200-R+C	313162	Remote Start	6-30.1	0.7-3.4	100-900	1 1/2"	13 1/8"	1/4" F/Hex	2.4 lbs
ECT40300-R+C	313167	Remote Start	8.9-44.3	1-5	100-620	1 1/2"	13 1/8"	1/4" F/Hex	2.4 lbs
ECT50100-R	313089	Remote Start	8-39.8	0.9-4.5	100-1800	1 1/2"	13 1/8"	1/4" F/Hex	2.4 lbs
ECT50104-R	313090	Remote Start	8-39.8	0.9-4.5	100-1800	1 1/2"	13 1/8"	3/8" Sq. Dr.	2.4 lbs
ECT50200-R	313091	Remote Start	20.4-101.8	2.3-11.5	50-690	1 1/2"	13 1/8"	1/4" F/Hex	2.4 lbs
ECT50204-R	313092	Remote Start	20.4-101.8	2.3-11.5	50-690	1 1/2"	13 1/8"	3/8" Sq. Dr.	2.4 lbs
ECT50300-R	313093	Remote Start	28.3-141.6	3.2-16	50-470	1 1/2"	13 1/8"	1/4" F/Hex	2.4 lbs
ECT50304-R	313094	Remote Start	28.3-141.6	3.2-16	50-470	1 1/2"	13 1/8"	3/8" Sq. Dr.	2.4 lbs
ECT50500-R	313095	Remote Start	42.5-212.4	4.8-24	50-310	1 1/2"	13 1/8"	1/4" F/Hex	2.7 lbs
ECT50504-R	313096	Remote Start	42.5-212.4	4.8-24	50-310	1 1/2"	13 1/8"	3/8" Sq. Dr.	2.7 lbs
ECT50604-R	313097	Remote Start	58.4-292.1	6.6-33	50-200	1 1/2"	13 1/8"	3/8" Sq. Dr.	2.7 lbs
ECT50804-R	313098	Remote Start	70.8-354	8-40	50-160	1 1/2"	13 5/8"	3/8" Sq. Dr.	2.8 lbs
ECT50805-R	313099	Remote Start	70.8-354	8-40	50-160	1 1/2"	13 5/8"	1/2" Sq. Dr.	2.8 lbs
ECT50904-R	313100	Remote Start	100.9-504.5	11.4-57	50-115	1 1/2"	13 5/8"	3/8" Sq. Dr.	2.8 lbs
ECT50905-R	313101	Remote Start	100.9-504.5	11.4-57	50-115	1 1/2"	13 5/8"	1/2" Sq. Dr.	2.8 lbs

Mountz EC-Series smart electric screwdrivers



IN-LINE MODELS

MODEL	ITEM NO.	DRIVER TYPE	TORQUE RANGES		ADJUSTABLE SPEED RPM	GRIP DIAMETER	LENGTH	DRIVE SIZE	WEIGHT
			LBF.IN	N.M					
EC40000	313169	Lever Start	0.7-3.5	0.1-0.4	150-2000	1 1/2"	10 3/4"	1/4" F/Hex	1.8 lbs
EC40050	313170	Lever Start	1.2-6.1	0.15-0.7	150-2000	1 1/2"	10 3/4"	1/4" F/Hex	1.8 lbs
EC40100	313171	Lever Start	2.4-12.2	0.3-1.4	100-1500	1 1/2"	10 3/4"	1/4" F/Hex	1.8 lbs
EC40200	313172	Lever Start	5.9-29.5	0.7-3.3	100-900	1 1/2"	10 3/4"	1/4" F/Hex	1.8 lbs
EC40300	313173	Lever Start	8.7-43.4	1-4.9	100-620	1 1/2"	10 3/4"	1/4" F/Hex	1.8 lbs
EC50000	313006	Lever Start	2.1-10.4	0.2-1.2	150-2000	1 1/2"	11 1/8"	1/4" F/Hex	1.8 lbs
EC50050	313007	Lever Start	3.8-19.1	0.4-2.2	150-2000	1 1/2"	11 1/8"	1/4" F/Hex	1.8 lbs
EC50100	313008	Lever Start	7-34.7	0.8-3.9	150-1500	1 1/2"	11 1/8"	1/4" F/Hex	1.8 lbs
EC50104	313201	Lever Start	7-34.7	0.8-3.9	150-1500	1 1/2"	11 1/4"	3/8" Sq. Dr.	1.8 lbs
EC50150	313009	Lever Start	13-65.1	1.5-7.4	100-950	1 1/2"	11 1/8"	1/4" F/Hex	2 lbs
EC50154	313202	Lever Start	13-65.1	1.5-7.4	100-950	1 1/2"	11 1/4"	3/8" Sq. Dr.	2 lbs
EC50200	313010	Lever Start	15.6-78.1	1.8-8.8	50-690	1 1/2"	11 1/8"	1/4" F/Hex	2 lbs
EC50204	313203	Lever Start	15.6-78.1	1.8-8.8	50-690	1 1/2"	11 1/4"	3/8" Sq. Dr.	2 lbs
EC50300	313011	Lever Start	24.3-121.5	2.8-13.7	50-470	1 1/2"	11 1/8"	1/4" F/Hex	2 lbs
EC50304	313204	Lever Start	24.3-121.5	2.8-13.7	50-470	1 1/2"	11 1/4"	3/8" Sq. Dr.	2 lbs
EC50554	313205	Lever Start	46.9-234.3	5.3-26.5	50-260	1 1/2"	11 1/4"	3/8" Sq. Dr.	2.3 lbs
EC50704	313206	Lever Start	60.8-303.8	6.9-34.3	50-180	1 1/2"	11 3/4"	3/8" Sq. Dr.	2.5 lbs
EC50705	313207	Lever Start	60.8-303.8	6.9-34.3	50-180	1 1/2"	11 3/4"	1/2" Sq. Dr.	2.5 lbs
EC50854	313208	Lever Start	86.8-434	9.8-49	50-135	1 1/2"	11 3/4"	3/8" Sq. Dr.	2.5 lbs
EC50855	313209	Lever Start	86.8-434	9.8-49	50-135	1 1/2"	11 3/4"	1/2" Sq. Dr.	2.5 lbs

Mountz EC-Series smart electric screwdrivers continued



PISTOL GRIP MODELS

MODEL	ITEM NO.	DRIVER TYPE	TORQUE RANGES		ADJUSTABLE SPEED RPM	GRIP DIAMETER	LENGTH	DRIVE SIZE	WEIGHT
			LBF.IN	N.M					
EC50000-PB EC50000-PT	313012 313017	Pistol Grip	2.1-10.4	0.2-1.2	150-2000	2"	8 1/3"	1/4" F/Hex	2.2 lbs
EC50050-PB EC50050-PT	313013 313018	Pistol Grip	3.8-19.1	0.4-2.2	150-2000	2"	8 1/3"	1/4" F/Hex	2.2 lbs
EC50100-PB EC50100-PT	313014 313019	Pistol Grip	7.8-39.1	0.9-4.4	150-1500	2"	8 1/3"	1/4" F/Hex	2.2 lbs
EC50104-PB EC50104-PT	313210 313222	Pistol Grip	7.8-39.1	0.9-4.4	150-1500	2"	8 1/3"	3/8" Sq. Dr.	2.2 lbs
EC50120-PB EC50120-PT	313211 313223	Pistol Grip	11.3-56.4	1.3-6.4	100-1250	2"	8 1/3"	1/4" F/Hex	2.2 lbs
EC50124-PB EC50124-PT	313212 313224	Pistol Grip	11.3-56.4	1.3-6.4	100-1250	2"	8 1/3"	3/8" Sq. Dr.	2.2 lbs
EC50200-PB EC50200-PT	313015 313020	Pistol Grip	19.1-95.5	2.2-10.8	50-690	2"	9"	1/4" F/Hex	2.2 lbs
EC50204-PB EC50204-PT	313213 313225	Pistol Grip	19.1-95.5	2.2-10.8	50-690	2"	9"	3/8" Sq. Dr.	2.2 lbs
EC50300-PB EC50300-PT	313016 313021	Pistol Grip	27.8-138.9	3.1-15.7	50-470	2"	9"	1/4" F/Hex	2.4 lbs
EC50304-PB EC50304-PT	313214 313226	Pistol Grip	27.8-138.9	3.1-15.7	50-470	2"	9"	3/8" Sq. Dr.	2.4 lbs
EC50500-PB EC50500-PT	313215 313227	Pistol Grip	41.7-208.3	4.7-23.5	50-310	2"	9 1/2"	1/4" F/Hex	2.4 lbs
EC50504-PB EC50504-PT	313216 313228	Pistol Grip	41.7-208.3	4.7-23.5	50-310	2"	9 1/2"	3/8" Sq. Dr.	2.4 lbs
EC50604-PB EC50604-PT	313217 313229	Pistol Grip	55.6-277.7	6.3-31.4	50-200	2"	9 1/2"	3/8" Sq. Dr.	2.4 lbs
EC50804-PB EC50804-PT	313218 313230	Pistol Grip	69.4-347.2	7.9-39.2	50-160	2"	9 1/2"	3/8" Sq. Dr.	2.75 lbs
EC50805-PB EC50805-PT	313219 313231	Pistol Grip	69.4-347.2	7.9-39.2	50-160	2"	9 1/2"	1/2" Sq. Dr.	2.75 lbs
EC50904-PB EC50904-PT	313220 313232	Pistol Grip	86.8-434	9.8-49	50-115	2"	9 1/2"	3/8" Sq. Dr.	2.75 lbs
EC50905-PB EC50905-PT	313221 313233	Pistol Grip	86.8-434	9.8-49	50-115	2"	9 1/2"	1/2" Sq. Dr.	2.75 lbs

Note: PB models have power tool cable connection located at the bottom grip section of the tool.
PT models have power tool cable connection located at the top section of the tool.

Mountz EC-Series smart electric screwdrivers continued



RIGHT ANGLE MODELS

MODEL	ITEM NO.	DRIVER TYPE	TORQUE RANGES		ADJUSTABLE SPEED RPM	GRIP DIAMETER	LENGTH	DRIVE SIZE	WEIGHT
			LBF.IN	N.M					
EC40000-RA	313174	Right Angle	0.7-3.5	0.1-0.4	150-2000	2"	13 1/2"	1/4" F/Hex	2.8 lbs
EC40050-RA	313175	Right Angle	1.2-6.1	0.15-0.7	150-2000	2"	13 1/2"	1/4" F/Hex	2.8 lbs
EC40100-RA	313176	Right Angle	2.4-12.2	0.3-1.4	100-1500	2"	13 1/2"	1/4" F/Hex	2.8 lbs
EC40200-RA	313177	Right Angle	5.9-29.5	0.7-3.3	100-900	2"	13 1/2"	1/4" F/Hex	2.8 lbs
EC40300-RA	313178	Right Angle	8.7-43.4	1-4.9	100-620	2"	13 1/2"	1/4" F/Hex	2.8 lbs
EC50100-RA	313024	Right Angle	7.8-39.1	0.9-4.4	150-1500	2"	13 1/2"	1/4" F/Hex	2.8 lbs
EC50104-RA	313234	Right Angle	7.8-39.1	0.9-4.4	150-1500	2"	13 1/2"	3/8" Sq. Dr.	2.8 lbs
EC50120-RA	313235	Right Angle	11.3-56.4	1.3-6.4	100-1250	2"	13 1/2"	1/4" F/Hex	2.8 lbs
EC50124-RA	313236	Right Angle	11.3-56.4	1.3-6.4	100-1250	2"	13 1/2"	3/8" Sq. Dr.	3 lbs
EC50150-RA	313025	Right Angle	13-65.1	1.5-7.4	100-950	2"	13 1/2"	1/4" F/Hex	3 lbs
EC50154-RA	313237	Right Angle	13-65.1	1.5-7.4	100-950	2"	13 1/2"	3/8" Sq. Dr.	3 lbs
EC50200-RA	313026	Right Angle	19.1-95.5	2.2-10.8	50-690	2"	13 1/2"	1/4" F/Hex	3 lbs
EC50204-RA	313238	Right Angle	19.1-95.5	2.2-10.8	50-690	2"	13 1/2"	3/8" Sq. Dr.	3 lbs
EC50300-RA	313027	Right Angle	27.8-138.9	3.1-15.7	50-470	2"	13 1/2"	1/4" F/Hex	3 lbs
EC50304-RA	313239	Right Angle	27.8-138.9	3.1-15.7	50-470	2"	13 1/2"	3/8" Sq. Dr.	3 lbs
EC50500-RA	313240	Right Angle	41.7-208.3	4.7-23.5	50-310	2"	13 1/2"	1/4" F/Hex	3 lbs
EC50504-RA	313241	Right Angle	41.7-208.3	4.7-23.5	50-310	2"	13 1/2"	3/8" Sq. Dr.	3 lbs
EC50604-RA	313242	Right Angle	55.6-277.7	6.3-31.4	50-200	2"	13 1/2"	3/8" Sq. Dr.	3.3 lbs
EC50804-RA	313243	Right Angle	69.4-347.2	7.9-39.2	50-160	2"	13 1/2"	3/8" Sq. Dr.	3.5 lbs
EC50805-RA	313244	Right Angle	69.4-347.2	7.9-39.2	50-160	2"	13 1/2"	1/2" Sq. Dr.	3.5 lbs
EC50904-RA	313245	Right Angle	86.8-434	9.8-49	50-115	2"	13 1/2"	3/8" Sq. Dr.	3.5 lbs
EC50905-RA	313246	Right Angle	86.8-434	9.8-49	50-115	2"	13 1/2"	1/2" Sq. Dr.	3.5 lbs

Mountz EC-Series smart electric screwdrivers *continued*



ROBOTIC MODELS

MODEL	ITEM NO.	DRIVER TYPE	TORQUE RANGES		ADJUSTABLE SPEED RPM	GRIP DIAMETER	LENGTH	DRIVE SIZE	WEIGHT
			LBF.IN	N.M					
EC40000-R+C	313180	Remote Start	0.7-3.5	0.1-0.4	150-2000	1 1/2"	13 1/8"	1/4" F/Hex	2.4 lbs
EC40050-R+C	313182	Remote Start	1.2-6.1	0.15-0.7	150-2000	1 1/2"	13 1/8"	1/4" F/Hex	2.4 lbs
EC40100-R+C	313184	Remote Start	2.4-12.2	0.3-1.4	100-1500	1 1/2"	13 1/8"	1/4" F/Hex	2.4 lbs
EC40200-R+C	313186	Remote Start	5.9-29.5	0.7-3.3	100-900	1 1/2"	13 1/8"	1/4" F/Hex	2.4 lbs
EC40300-R+C	313188	Remote Start	8.7-43.4	1-4.9	100-620	1 1/2"	13 1/8"	1/4" F/Hex	2.4 lbs
EC50000-R	313028	Remote Start	2.1-10.4	0.2-1.2	150-2000	1 1/2"	13 1/8"	1/4" F/Hex	2.4 lbs
EC50050-R	313029	Remote Start	3.8-19.1	0.4-2.2	150-2000	1 1/2"	13 1/8"	1/4" F/Hex	2.4 lbs
EC50100-R	313030	Remote Start	7.8-39.1	0.9-4.4	150-1500	1 1/2"	13 1/8"	1/4" F/Hex	2.4 lbs
EC50104-R	313165	Remote Start	7.8-39.1	0.9-4.4	150-1500	1 1/2"	13 1/8"	3/8" Sq. Dr.	2.4 lbs
EC50120-R	313166	Remote Start	11.3-56.4	1.3-6.4	100-1250	1 1/2"	13 1/8"	1/4" F/Hex	2.4 lbs
EC50124-R	313247	Remote Start	11.3-56.4	1.3-6.4	100-1250	1 1/2"	13 1/8"	3/8" Sq. Dr.	2.4 lbs
EC50200-R	313032	Remote Start	19.1-95.5	2.2-10.8	50-690	1 1/2"	13 1/8"	1/4" F/Hex	2.4 lbs
EC50204-R	313248	Remote Start	19.1-95.5	2.2-10.8	50-690	1 1/2"	13 1/8"	3/8" Sq. Dr.	2.4 lbs
EC50300-R	313033	Remote Start	27.8-138.9	3.1-15.7	50-470	1 1/2"	13 1/8"	1/4" F/Hex	2.4 lbs
EC50304-R	313249	Remote Start	27.8-138.9	3.1-15.7	50-470	1 1/2"	13 1/8"	3/8" Sq. Dr.	2.4 lbs
EC50500-R	313250	Remote Start	41.7-208.3	4.7-23.5	50-310	1 1/2"	13 1/8"	1/4" F/Hex	2.7 lbs
EC50504-R	313251	Remote Start	41.7-208.3	4.7-23.5	50-310	1 1/2"	13 1/8"	3/8" Sq. Dr.	2.7 lbs
EC50604-R	313252	Remote Start	55.6-277.7	6.3-31.4	50-200	1 1/2"	13 1/8"	3/8" Sq. Dr.	2.7 lbs
EC50804-R	313253	Remote Start	69.4-347.2	7.9-39.2	50-160	1 1/2"	13 1/8"	3/8" Sq. Dr.	2.8 lbs
EC50805-R	313254	Remote Start	69.4-347.2	7.9-39.2	50-160	1 1/2"	13 1/8"	1/2" Sq. Dr.	2.8 lbs
EC50904-R	313255	Remote Start	86.8-434	9.8-49	50-115	1 1/2"	13 1/8"	3/8" Sq. Dr.	2.8 lbs
EC50905-R	313256	Remote Start	86.8-434	9.8-49	50-115	1 1/2"	13 1/8"	1/2" Sq. Dr.	2.8 lbs



Stands and brackets

Vertical Controller Stand

The vertical stand is an accessory option to mount the ECD or ECTD Controller for placement on an assembly workbench station.

Vertical Controller Stand

Item #310203



Wall Mount Bracket

The wall mount bracket is an accessory option for the ECD or ECTD controller. It can be firmly installed on the wall with 4 screws.

Wall Mount Bracket

Item #310215



Pistol Grip Side Handle

The pistol grip side handle is an optional accessory that mounts on either side for additional handgrip, greater control, and versatility.

For use with only pistol grip models for ECT-Series and EC-Series smart screwdrivers.

Pistol Grip Side Handle

Item # 313199



Bit Socket Trays

Error-proofing solution minimizes the risk of errors by automatically selecting the correct torque according to the chosen socket or bit. The device connects to the ECD or ECTD controller. It will improve productivity and reduce operator errors. Saves downtime by automatically changing program settings for multiple fastening sequences and workflows.



LCD MODELS

Bit Socket Tray (4 bit holders)

Item #310185

Includes four 7.5 mm bit holders

Bit Socket Tray (8 bit holders)

Item #310186

Includes eight 7.5 mm bit holders

Bit Socket Tray (12 bit holders)

Item #310187

Includes twelve 7.5 mm bit holders.

Bit Socket Tray (16 bit holders)

Item #310188

Includes sixteen 7.5 mm bit holders



STANDARD MODELS

Bit Socket Tray (4 bit holders)

Item #310092

Includes four 7.5 mm bit holders

Bit Socket Tray (8 bit holders)

Item #310093

Includes eight 7.5 mm bit holders

Bit Socket Tray (12 bit holders)

Item #310194

Includes twelve 7.5 mm bit holders

Note: Additional bit holder insert sizes are available. See options on the next page.

Bit socket configuration process

The Bit Socket Tray system requires three components:

1. Select Bit Socket Tray option (see previous page)
2. Add SMPS adapter
3. Select communication cable that connects the Bit Socket Tray to the ECD and ECTD Controller



SMPS Adapter (24VDC 1A)
Item #310102
Includes a UL 2P 110V Power cord plug.*

Power Cord for SMPS Adapter (220V CE Plug)
Item #310110



Cable 25P I/O (M-M) 3 meters
Item #310112

Cable 25P I/O (M-M) 5 meters
Item #310115

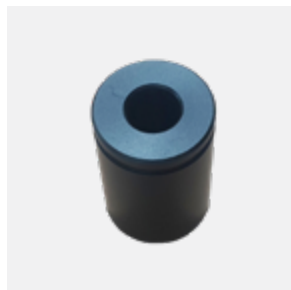
*Note: For 220V, purchase Item #310110 along with #310102

Bit Holders

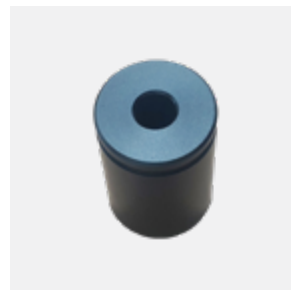
Additional bit holder inserts can be purchased separately for the bit socket tray.



Bit Holder (Hole size 18mm)
Item #310104



Bit Holder (Hole size 10mm)
Item #310106



Bit Holder (Hole size 3mm)
Item #310108



Bit Holder (Hole size 15mm)
Item #310105

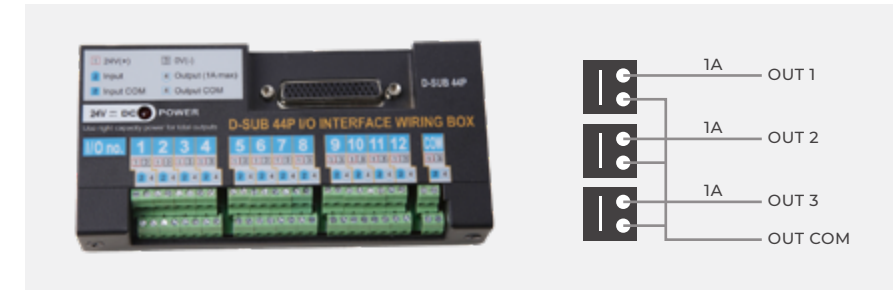
Bit Holder (Hole size 7.5mm)
Item #310107

Bit Holder (Plain)
Item #310109

44P I/O Wiring Box

It provides easy and convenient wiring for 12 inputs and outputs for a ECD, ECTD or ADC controller by sharing one single 24V power source (Input power: 24VDC 1A).

A I/O Cable is needed to connect to a controller.



I/O Wiring Box
Item #310055

Note: It requires an AC Adapter, Item #310102



**I/O Cable 3m
(44P male to 25P male)**
Item #310057

D_SUB 44P									
1	In 1	10	In 10	19	Out 4	28	-	37	Out Com
2	In 2	11	In 11	20	Out 5	29	Out Com	38	-
3	In 3	12	In 12	21	Out 6	30	Out Com	39	-
4	In 4	13	-	22	Out 7	31	24V+	40	-
5	In 5	14	In Com	23	Out 8	32	24V+	41	-
6	In 6	15	In Com	24	Out 9	33	24V+	42	-
7	In 7	16	Out 1	25	Out 10	34	-	43	-
8	In 8	17	Out 2	26	Out 11	35	Out Com	44	-
9	In 9	18	Out 3	27	Out 12	36	Out Com		

Telescopic Bit Cushions

The telescopic bit cushion reduces impact and vibration transmitted in the screw fastening process. Ideal for fastening delicate components such as disk drives, plastics, and electronics. Commonly used with the robotic screwdriver models.



TBC-1
Item #310200

Compatible with ECT screwdriver models: ECT50100-R, ECT50200-R, ECT50300-R, and ECT50500-R (1/4 F/Hex models) see page 14 for ECT-Series robotic models.

Compatible with EC-Series models: EC50000-R, EC50050-R, EC50100-R, EC50120-R EC50150-R, EC50200-R, EC50300-R, and EC50500-R " (1/4 F/Hex models) see page 18 for EC-Series robotic models.



TBC-2
Item #310201

Compatible with ECT-Series screwdriver models: EC50000-R, EC50050-R, EC50100-R, EC50150-R, and EC50200-R (1/4 F/Hex models)

Compatible with ECT-Series models: ECT50104-R, ECT50204-R, ECT50304-R, ECT50504-R, ECT50604-R, ECT50804-R, and ECT50904-R (3/8 Sq. Dr. models) see page 14 for ECT-Series robotic models.

Compatible with EC-Series models: EC50104-R, EC50124-R EC50204-R, EC50304-R, EC50504-R, EC50604-R, EC50804-R, and EC50904-R (3/8 Sq. Dr. models) see page 18 for EC-Series robotic models.

Power tool cables

Each EC and ECT electric screwdriver is supplied with the standard 3-meter length cable. The driver cable connects the EC and ECT-Series electric screwdriver to the ECD or ECTD controller.

STANDARD POWER TOOL CABLES FOR EC AND ECT-SERIES

3m length cable
Item #310210

5m length cable
Item #310211

8m length cable
Item #310212

10m length cable
Item #310213



ECD and ECTD controller cables

Various supporting cables for the controllers.



RS232 Cable
(DB9 male x DB9 female, 2m)
Item #773856



Cable
(USB to RS232 adapter)
Item #773069



I/O Cable 3m
(44P male to 25P male)
Item #310057

Vacuum adapter kits

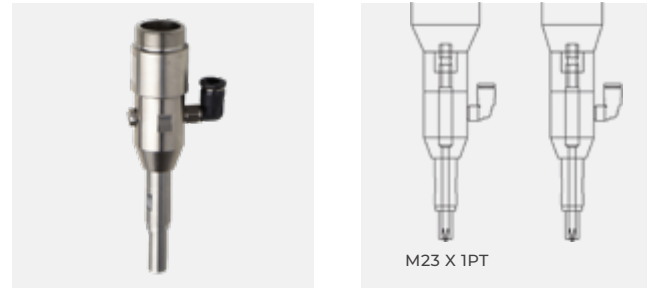
Vacuum adapter kits can be mounted on an electric screwdriver. The screwdriver is fitted with a suction head that holds the screw on the bit, enabling the operator to pick it up with the tool itself. This kit is a useful, time-saving device that works with most fasteners.

Item #310075

Specification: For 1/4 F/Hex Dr, M20

Bit: Ohmi V-17, 70mmL

Screwdriver types: EC40000, EC40050, EC40100, EC40200, EC40300, EC50000, EC50050, ECT40100, ECT40200, ECT40300



Item #310076

Specification: For 1/4 F/Hex Dr, M23

Bit: Ohmi V-17, 70mmL

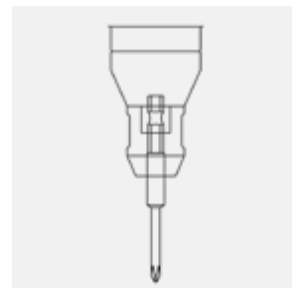
Screwdriver types: EC50100, EC50150, EC50200, EC50300, ECT50100, ECT50150, ECT50200, ECT50300



Note: Mouthpiece and bit purchased separately.

Torque cover bit holders

Provides better bit concentricity for a long length bit.



Item #310078

Specification: For 1/4 F/Hex Dr, M20

Bit: Ohmi V-17, 70mmL

Screwdriver types: EC40000, EC40050, EC40100, EC40200, EC40300, EC50000, EC50050, ECT40100, ECT40200, ECT40300

Item #310079

Specification: For 1/4 F/Hex Dr, M23

Bit: Ohmi V-17, 70mmL

Screwdriver types: EC50100, EC50150, EC50200, EC50300, ECT50100, ECT50150, ECT50200, ECT50300



Achieve a robust manufacturing process using Mountz intelligent electric screwdriver system.

ENGINEERED IN SILICON VALLEY



MOUNTZ
SINCE 1965

ABOUT MOUNTZ

Mountz, The Torque Tool Specialists®, has been a leader in the torque tool industry for more than 55 years. Engineered in the Silicon Valley and serving the globe, Mountz focuses on delivering high-quality torque products, services, and solutions to ensure customers can always proceed with confidence. We are committed to forging a safer world through precision and accuracy, and by innovating every day.



mountztorque.com

SILICON VALLEY HEADQUARTERS AND SERVICE CENTER

1080 N. 11th St., San Jose, CA 95112
408-292-2214 / M-F 6am-5pm PST

ALABAMA DISTRIBUTION AND SERVICE CENTER

19051 Underwood Road, Foley, AL 36535

INTERNATIONAL

For inquiries outside of the USA,
Canada, and Mexico, please contact:
international@mountztorque.com
Phone: +44 1428 741756