



RoHS

# VB-Series

## Brushless Electric Torque Screwdrivers Direct Plug-In

| Model    | Driver Type   | Item # | Torque Ranges |           |
|----------|---------------|--------|---------------|-----------|
|          |               |        | lbf.in        | cN.m      |
| VB1510   | Lever Start   | 144280 | 2.2 - 13      | 25 - 150  |
| VB1510PS | Push-to-Start | 144281 | 2.2 - 13      | 25 - 150  |
| VB1820   | Lever Start   | 144282 | 3.5 - 16      | 40 - 180  |
| VB1820PS | Push-to-Start | 144283 | 3.5 - 16      | 40 - 180  |
| VB3012   | Lever Start   | 144284 | 4.3 - 26      | 50 - 300  |
| VB3012PS | Push-to-Start | 144285 | 4.3 - 26      | 50 - 300  |
| VB4504   | Lever Start   | 144286 | 8.7 - 39      | 100 - 450 |
| VB4504PS | Push-to-Start | 144287 | 8.7 - 39      | 100 - 450 |

| Model    | RPM  | Grip Diameter | Length  | Drive Size      | Weight   |
|----------|------|---------------|---------|-----------------|----------|
| VB1510   | 970  | 1 1/4"        | 10"     | 1/4" Female/Hex | 18.6 oz. |
| VB1520PS | 970  | 1 1/4"        | 10"     | 1/4" Female/Hex | 18.6 oz. |
| VB1820   | 2000 | 1 1/2"        | 11 1/4" | 1/4" Female/Hex | 26.5 oz. |
| VB1820PS | 2000 | 1 1/2"        | 11 1/4" | 1/4" Female/Hex | 26.5 oz. |
| VB3012   | 1200 | 1 1/2"        | 11 1/4" | 1/4" Female/Hex | 26.5 oz. |
| VB3012PS | 1200 | 1 1/2"        | 11 1/4" | 1/4" Female/Hex | 26.5 oz. |
| VB4504   | 400  | 1 1/2"        | 11 1/4" | 1/4" Female/Hex | 26.5 oz. |
| VB4504PS | 400  | 1 1/2"        | 11 1/4" | 1/4" Female/Hex | 26.5 oz. |

### KEY FEATURES

Various models that range from 2.2 lbf.in to 39 lbf.in.

High performance brushless motor design provides durability and reduces the standard maintenance costs for electric drivers.

Designed for high production environments. Minimal heat build-up even when tool is operated continuously.

Plugs directly into a power outlet. Separate power supply not required.

Positive auto shut-off.

Push-to-Start and Lever operated styles available.

Duty cycle tool.

120 VAC, 10 foot power cord.

External torque adjustment scale.

### ACCESSORIES

Pistol Grip Attachment (Push-to-Start Models)  
Item #144274

Right Angle Adapter for Lever Start Models  
Item #144365

Hand Support Ring Item #144357

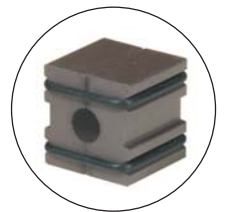
Vacuum Pickup Attachment  
Item #144356



### TOOL CRIB

Prevents broken or dropped tools. Reduces tool bench clutter. Easy operator access. Mounts in a variety of positions on the work bench or the production line. The flexible ToolCrib can rotate to 8 locations. Hole at the bottom of ToolCrib allows for a bit to pass through. Crafted with durable aluminum.

Item #064000  
SEE PAGE 01.45



### TOOL BALANCERS

Provides easy handling for operators that work with tools for long, continuous hours.

SEE PAGE 01.42



### MAGNETIZER / DEMAGNETIZER

Magnetize or demagnetize bits and parts instantly.

Item #120815  
SEE PAGE 01.45



### MOUNTZ Tool Selector

Easy to navigate, a guide that assists engineers in selecting the proper tool for the application. Visit [www.mountztorque.com/torque-tool-selector](http://www.mountztorque.com/torque-tool-selector).



### MOUNTZ Learning Center

Your Resource for Torque Knowledge! For more on torque, including "how to" guides, product videos and other useful resources visit [www.mountztorque.com/learning-center](http://www.mountztorque.com/learning-center).