








## System Requirements(UT372)

To use **UT372 Interface Program**, you need the following hardware and software:

-  An IBM PC or equivalent computer with 80586 or higher processor and 600 x 800 pixel or better monitor.
-  Microsoft Windows 98, Window2000, window NT, Windows ME, Windows XP, Windows VISTA, Windows 7.
-  At least 128MB of RAM.
-  Can access to a local or a network CD-ROM.
-  A usb port.
-  A mouse or other pointing device supported by Windows.

## Hardware install:

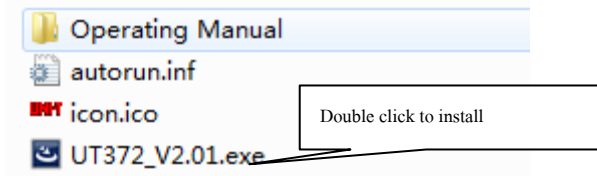
-  If what to use is multimeter the USB provide with the form connect a people's line, the USB pick up a people line of red unauthorized biography lose the line to receive to carry to insert multimeter fix in the slot with a back of the form protection, then go on-line of another on carry with computer of string a right conjunction is then.

## Installing UT372 Interface Program

To install **UT372 Interface Program**, please follow below procedure:

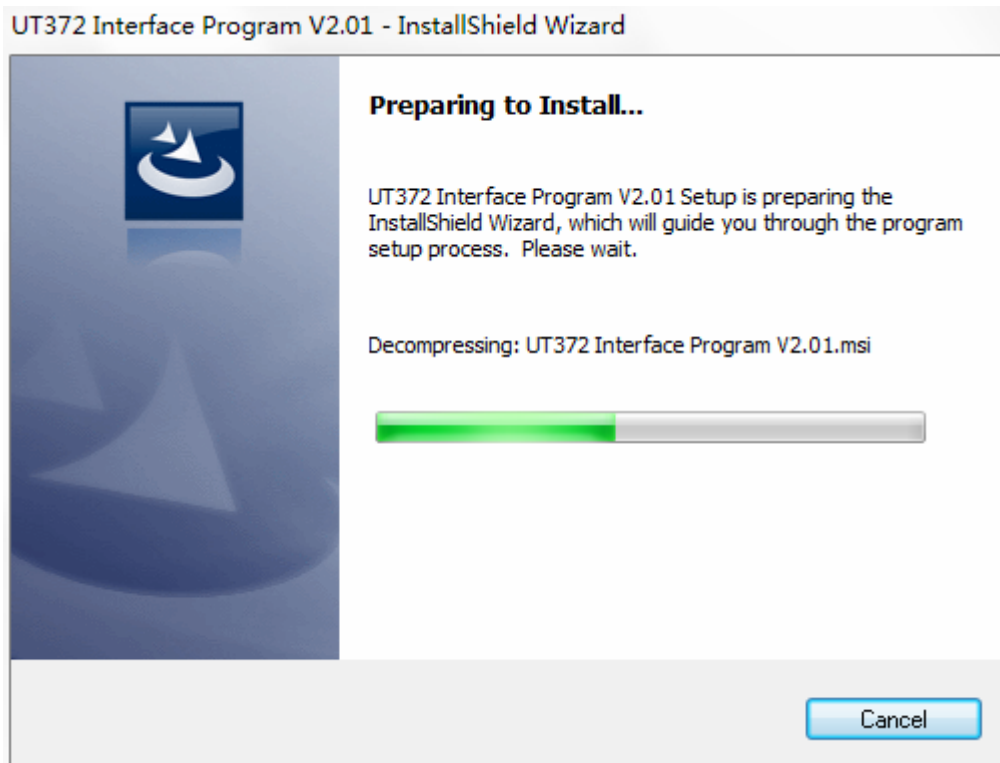
Before install the interface program, make sure that the computer is running the Window 98 or above operating system.

- 1.Insert the provided CD-ROM into CD-ROM drive.
- 2.Double-click the My Computer icon from the Windows desktop.



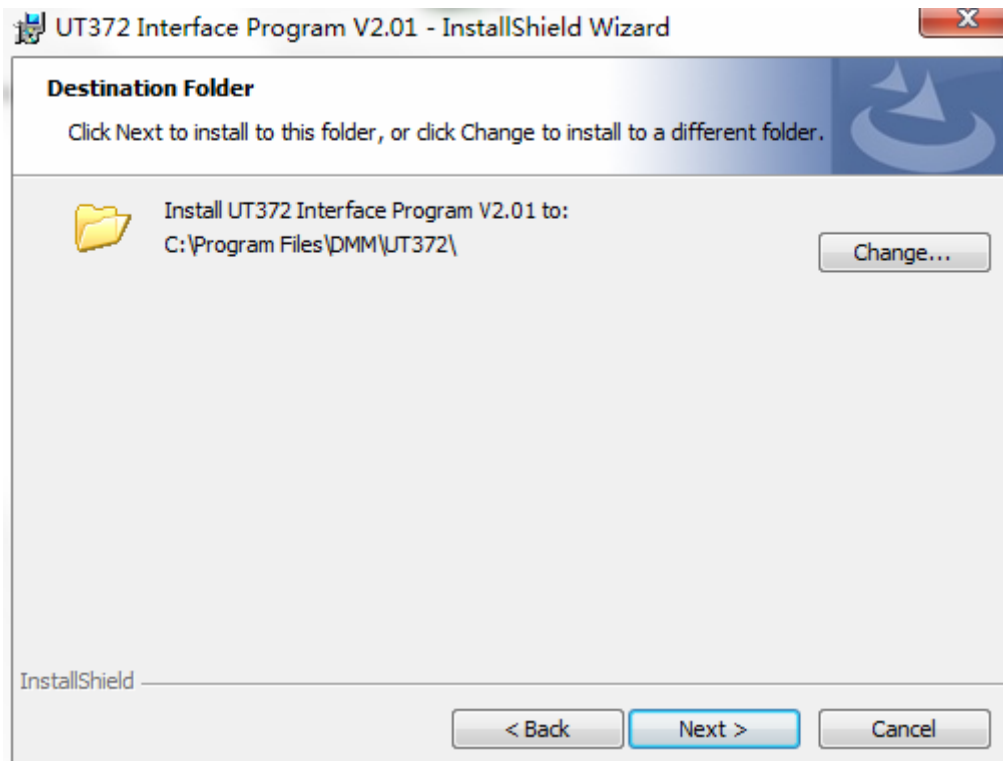
(figure 1)

- 3.click UT372 Setup to display the contents of the folder.Double-click the file Setup.Exe.



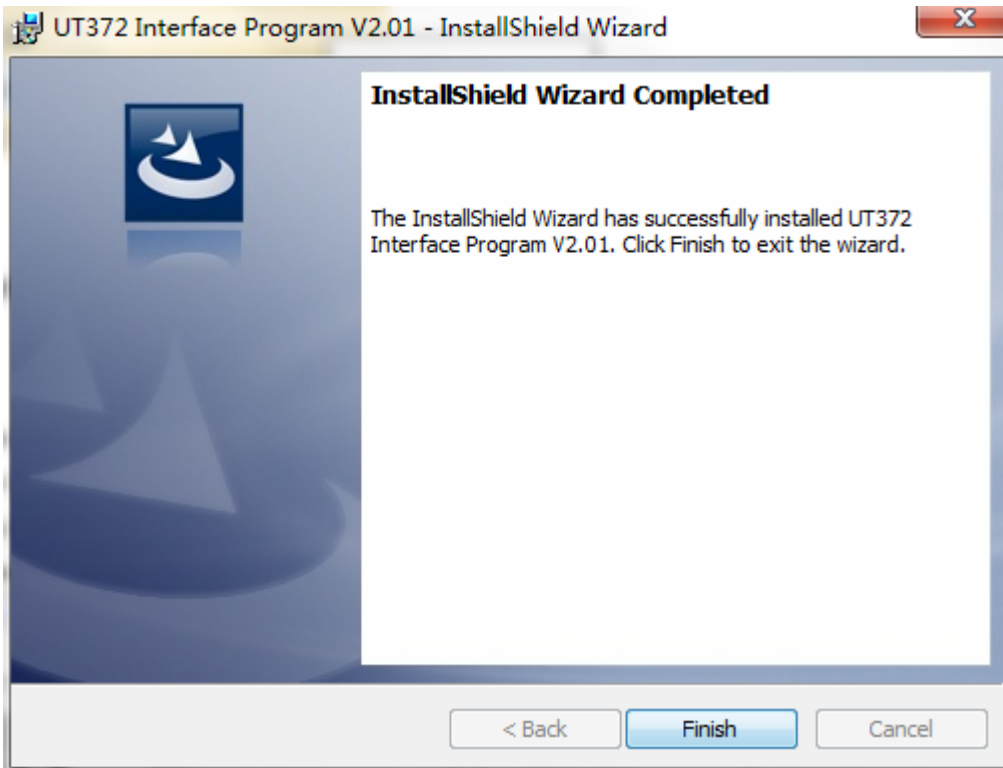
(figure 2)

4. Follow the on-screen installation instructions.



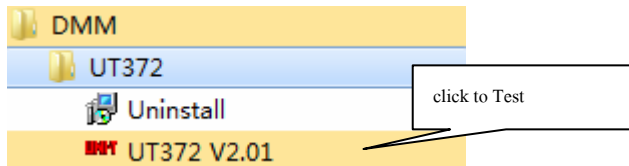
(figure 3)

5. Until the software installs to complete.






(figure 4)

6. The software installs to complete, the customer can find out" the DMM Interface Program- UT372" in program folder.

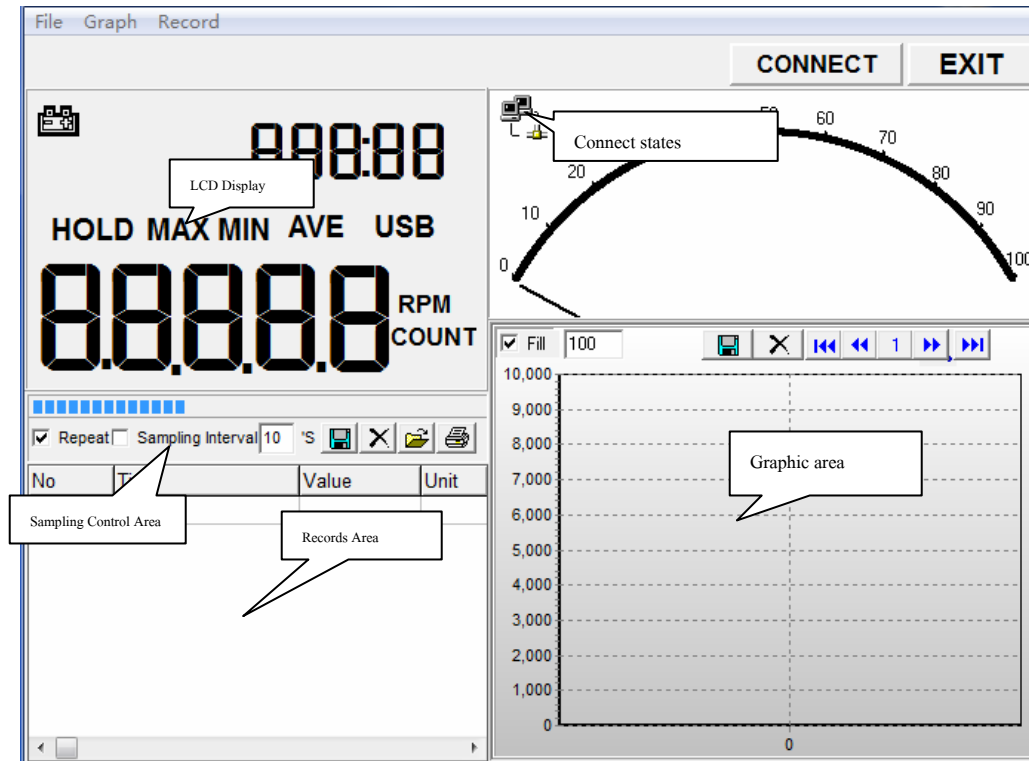


(figure 5)

## Getting Started with UT372 Interface Program

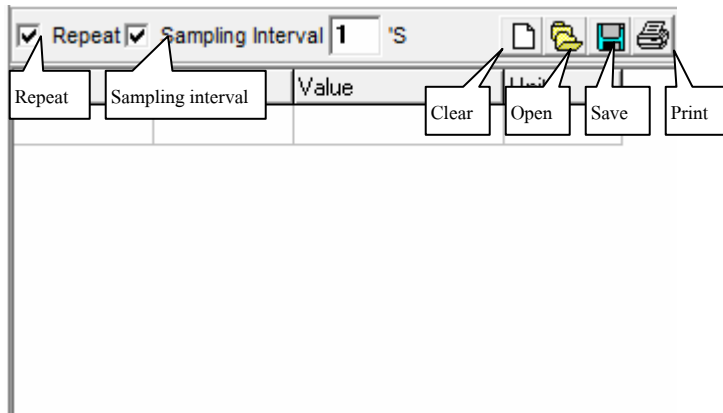
-  .From the Windows **Start** menu, choose **Programs > DMM Interface Program > UT372**
-  Press **USB connect**
-  Press **Connect** from menu bar to start the connection, the icon will be displayed.

Below is the full screen of the software shown on the computer .








(figure 6)


**Data record**



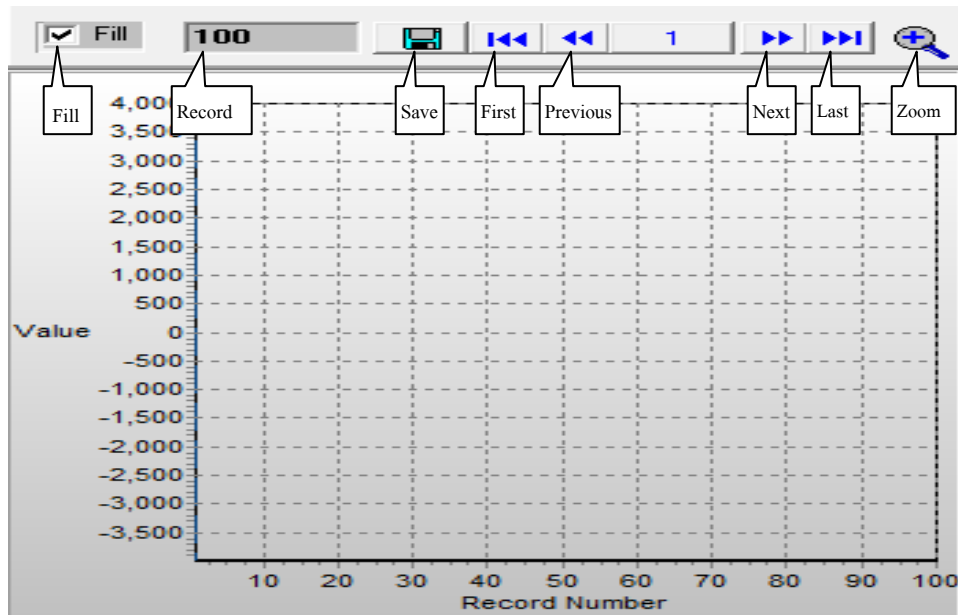
(figure 7)

During the connection, you can select the following functions by clicking the corresponding icon or the menu bar:

-  **Repeat:** Click the box to keep the repeated record, or unclick the box to ignore the repeated record. The repeated records will be shown in graphic no matter what the selection is.
-  **Sampling Interval:** Click to enable sampling interval function, or unclick to disable the function  
Enter the sampling interval's time, the unit is second.
-  **Clear:** To clear all the current records permanently.
-  **Open :** To read records form old file (\*.xls,\*.txt,\*.xml) .
-  **Save:** To save all the current records to file (\*.xls,\*.txt,\*.xml).










 **print:** To print the current records.

## Graphic operation



(figure 7)

During the connection, you can select the following functions by clicking the corresponding icon or the menu bar:

-  **Fill:** Click the box to select “fill-up graph” or unclick to select “line graph”.
-  **Record:** Setting the number of record to be shown on graphic.
  
-  **Clear:** To clear all the current records’ graphics permanently.
-  **Save:** To save current graphic into BMP format.
-  **First:** Go to the first graphic.
-  **Previous:** Go to the previous graphic.
-  **Next:** Go to the next graphic.
-  **Last:** Go to the last graphic.
-  **Zoom :** To enlarge part of the graphic.

## Maximum Number of Records Setting

After testing, below list out a normal maximum number of records that a computer can be saved for user’s reference. The computer will slow down if it exceeds the maximum. 80486 computer: 1000 to 5000 records 80586 computer: 5000 to 50000 records Pentium 2 or up: 50000 records up To set the maximum number of records from the “Record” of the menu bar.