

System Prerequisites

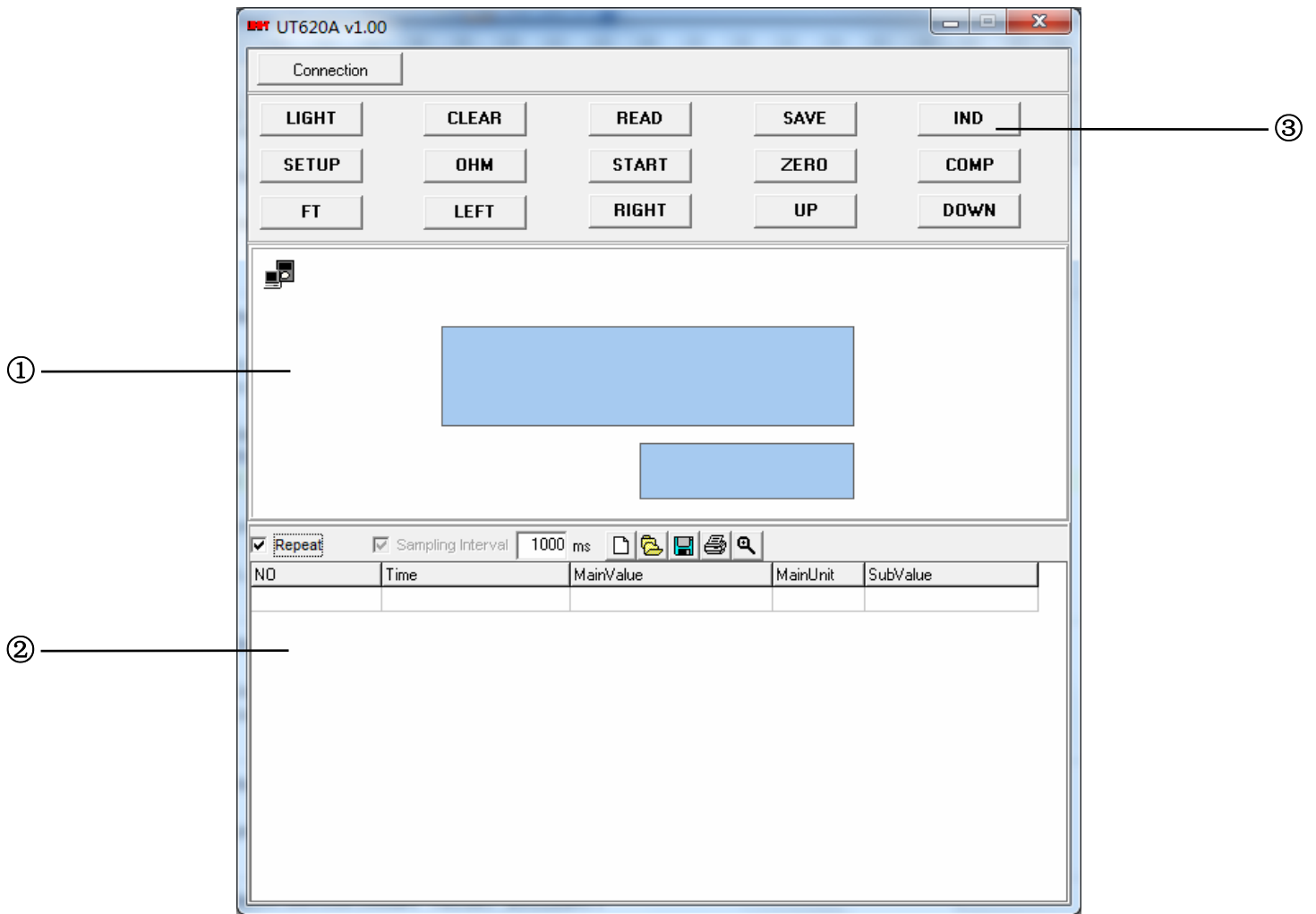
Recommended configuration

Processor	Pentium® 4 or higher with support of all customary operating systems
Operating system	Microsoft Windows® XP / Vista / Win7
Memory	512 MB RAM or higher
Monitor	VGA (1024 x 768)
Drive	CD-ROM
Input device	Mouse or compatible
Interface	USB

Install Software

- Insert the provided CD disk into CD-ROM drive.
- Double-click “XXX_VX.XX.exe” (X can be 0 to 9 or blank, indicating the software version)
- The pop-up windows will guide you through the program setup process.

Main Screen



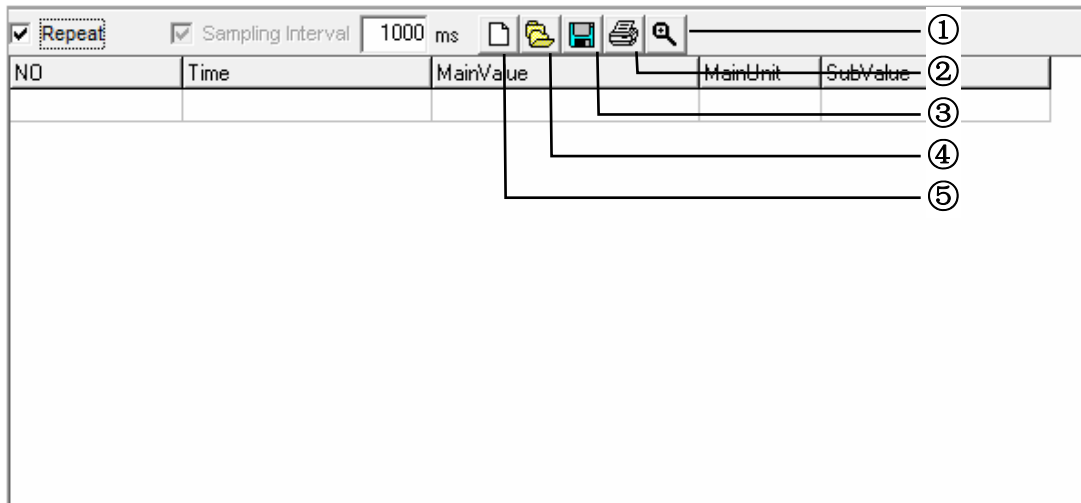
① Main display screen of measurement

② Secondary display screen for measurement

③ Control buttons

Using Program

Click “Connection” and is blinking indicates meter is successfully connected to the PC and meter will automatically start taking measurements. Primary display screen shows measurement, secondary display screen shows all measurement data.



- ① Zoom grid
- ② Print data
- ③ Save data (*.txt, *.xls, *.xml)
- ④ Open files (*.txt, *.xls, *.xml)

Repeat: Tick to display every measurement with the interval you set. Un-tick “Repeat”, the secondary display screen will only show measurement result that is different from the last measured temperature. The graph display will show complete measurement result in graphics despite “Repeat” is ticked or un-ticked.